



SOUTHERTON MEWS | LONDON W6

FLOORPLANS

APARTMENTS 1 & 4 Lower & Ground Floors

APARTMENT 1

Total Area 82.1m² 883.7ft²

Kitchen / Living
6.1m x 6.5m (31.3m² 336.9ft²)

Bedroom 1 (with en-suite)
2.6m x 6.0m (15.5m² 166.8ft²)

Bedroom 2
3.8m x 2.9m (10.5m² 113.0ft²)

Garden / Patio
8.9m x 3.3m (29.2sqm² 314.3ft²)

APARTMENT 4

Total Area 80.2 m² 863.2ft²

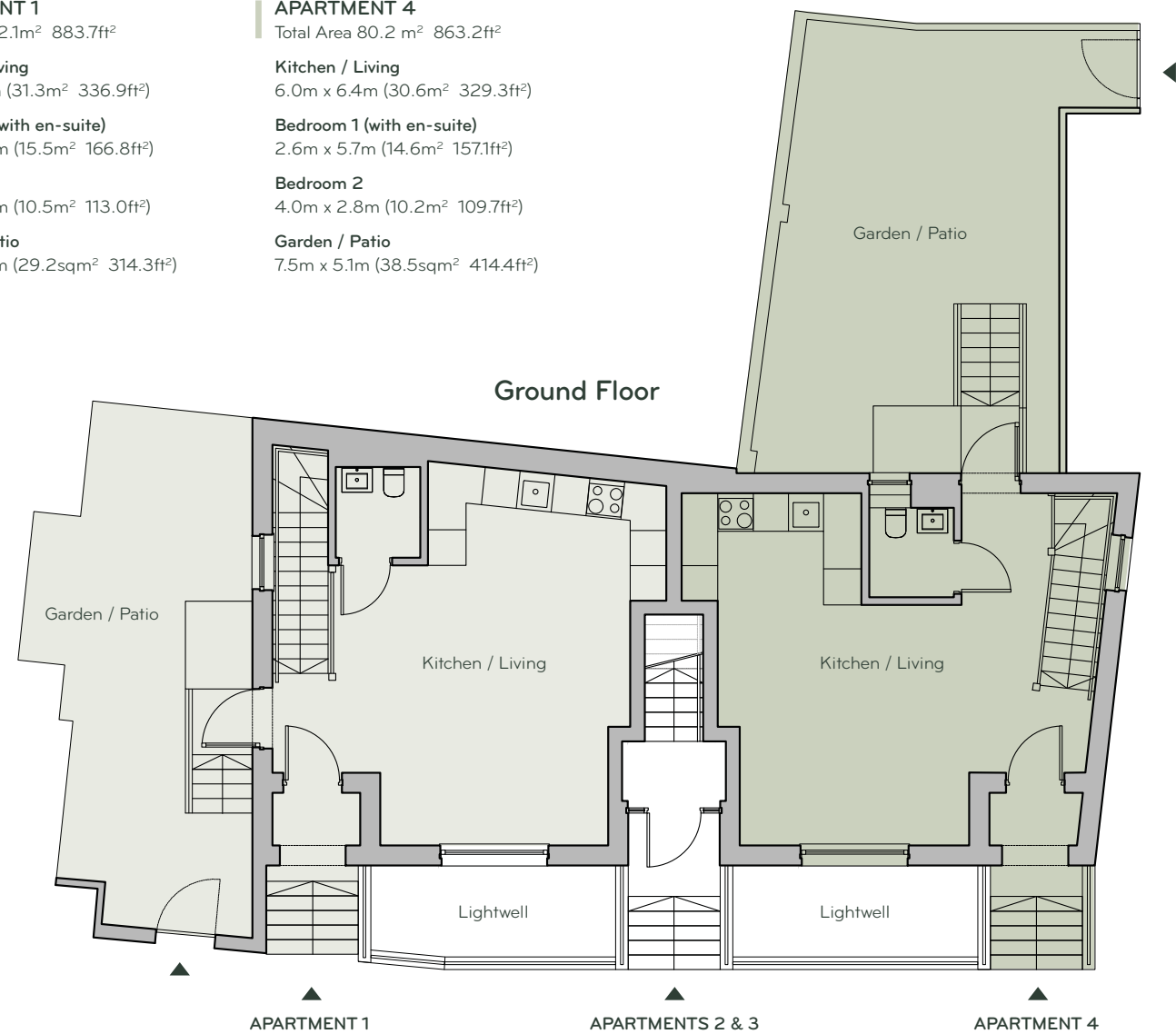
Kitchen / Living
6.0m x 6.4m (30.6m² 329.3ft²)

Bedroom 1 (with en-suite)
2.6m x 5.7m (14.6m² 157.1ft²)

Bedroom 2
4.0m x 2.8m (10.2m² 109.7ft²)

Garden / Patio
7.5m x 5.1m (38.5sqm² 414.4ft²)

Ground Floor



APARTMENT 1

Courtyard
1.1m x 6.9m (7.7m² 82.7²)

Lower Ground

APARTMENT 4

Courtyard
1.1m x 6.8m (7.7m² 82.7²)



Apartment 1: Predicted Energy Assessment: EER Energy Efficiency Rating: 80C EI CO² Environmental Impact: 82B
Apartment 4: Predicted Energy Assessment: EER Energy Efficiency Rating: 81B EI CO² Environmental Impact: 83B

APARTMENTS 2 & 3 First & Second Floors



APARTMENT 2

Total Area 70.0m² 753.4ft²

Kitchen / Living
6.7m x 3.9m (26.1m² 280.9ft²)

Bedroom 1 (with en-suite)
3.0m x 4.9m (14.5m² 156.0ft²)

Bedroom 2
3.5m x 2.4m (9.6m² 103.3ft²)

Balcony
3.0m x 2.0m (6m² 64.5ft²)

APARTMENT 3

Total Area 73.8m² 794.3ft²

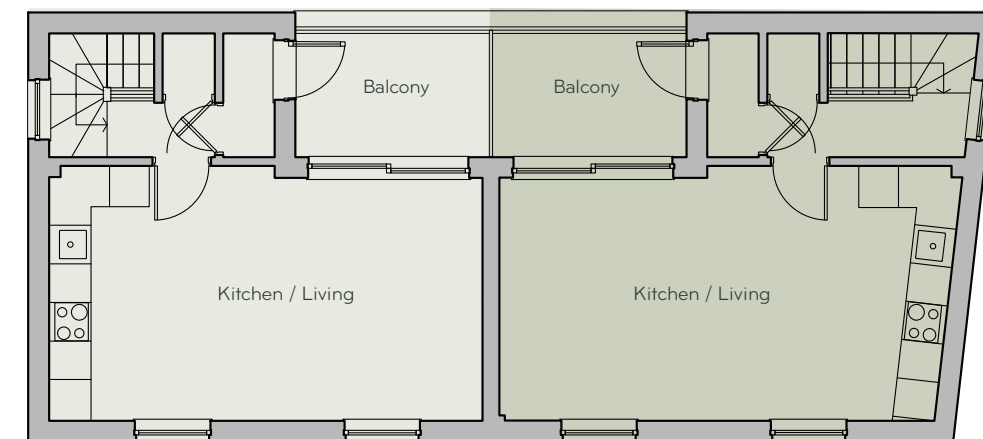
Kitchen / Living
6.9m x 3.9m (27.1m² 291.7ft²)

Bedroom 1 (with en-suite)
3.3m x 4.9m (15.3m² 164.6ft²)

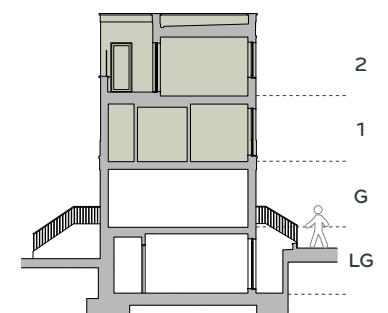
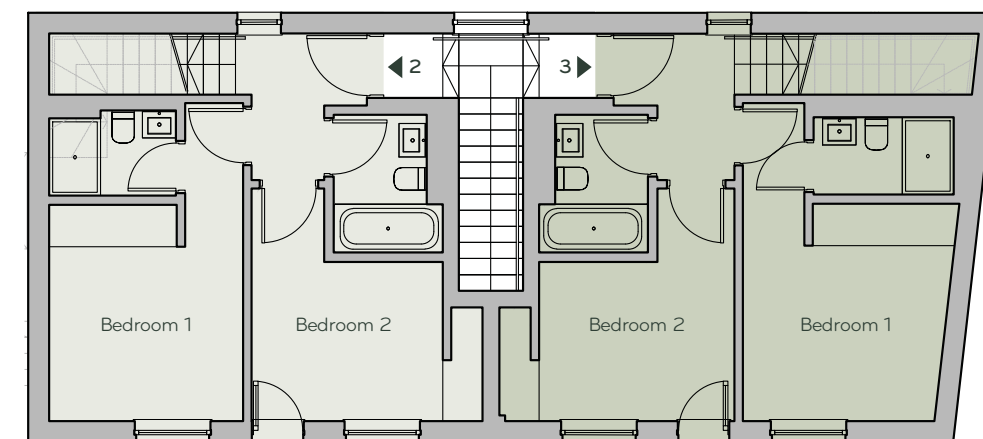
Bedroom 2
3.6m x 2.4m (9.8m² 105.4ft²)

Balcony
3.0m x 2.0m (6m² 64.5ft²)

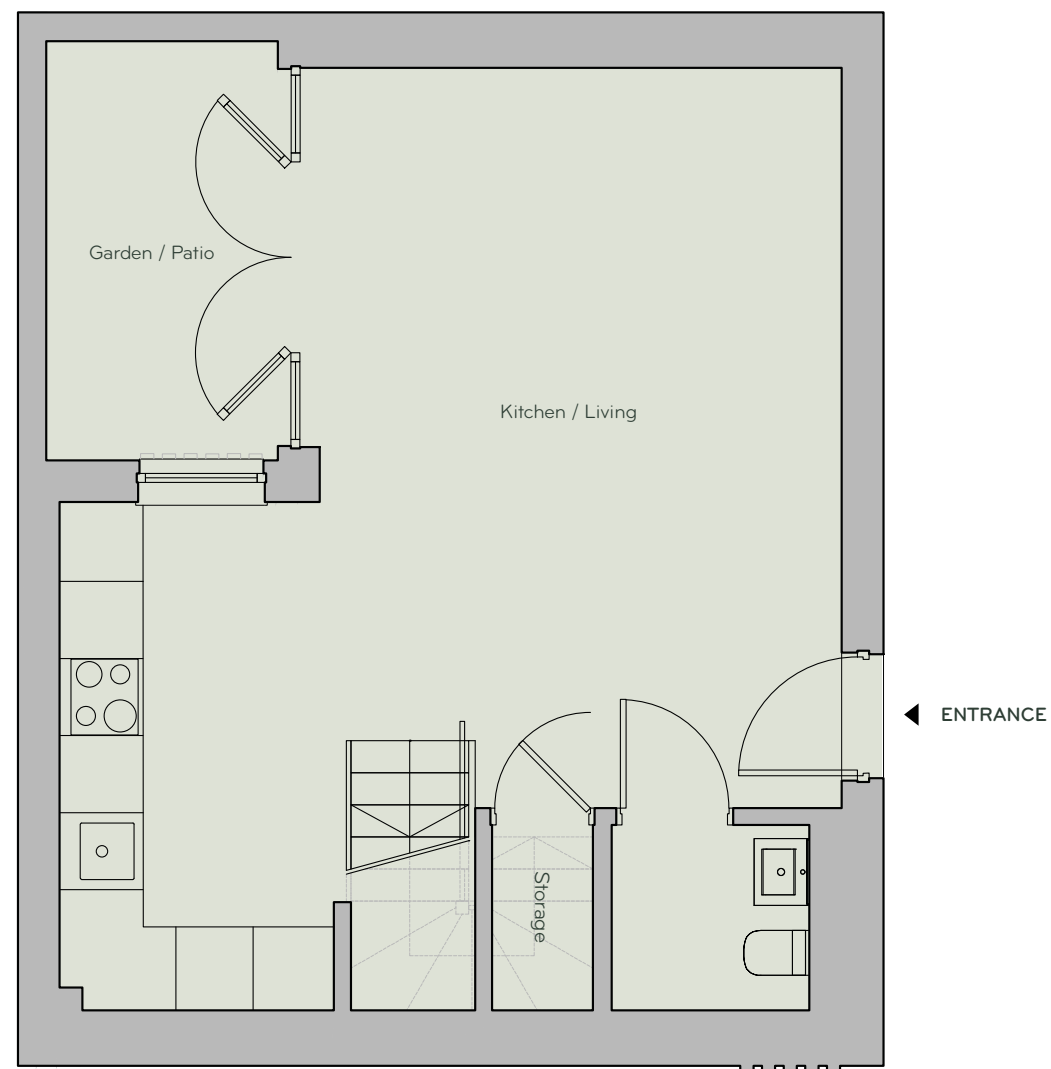
Second Floor



First Floor



Apartment 2: Predicted Energy Assessment: EER Energy Efficiency Rating: 82B EI CO² Environmental Impact: 84B
Apartment 3: Predicted Energy Assessment: EER Energy Efficiency Rating: 76C EI CO² Environmental Impact: 78C



MEWS HOUSE 5

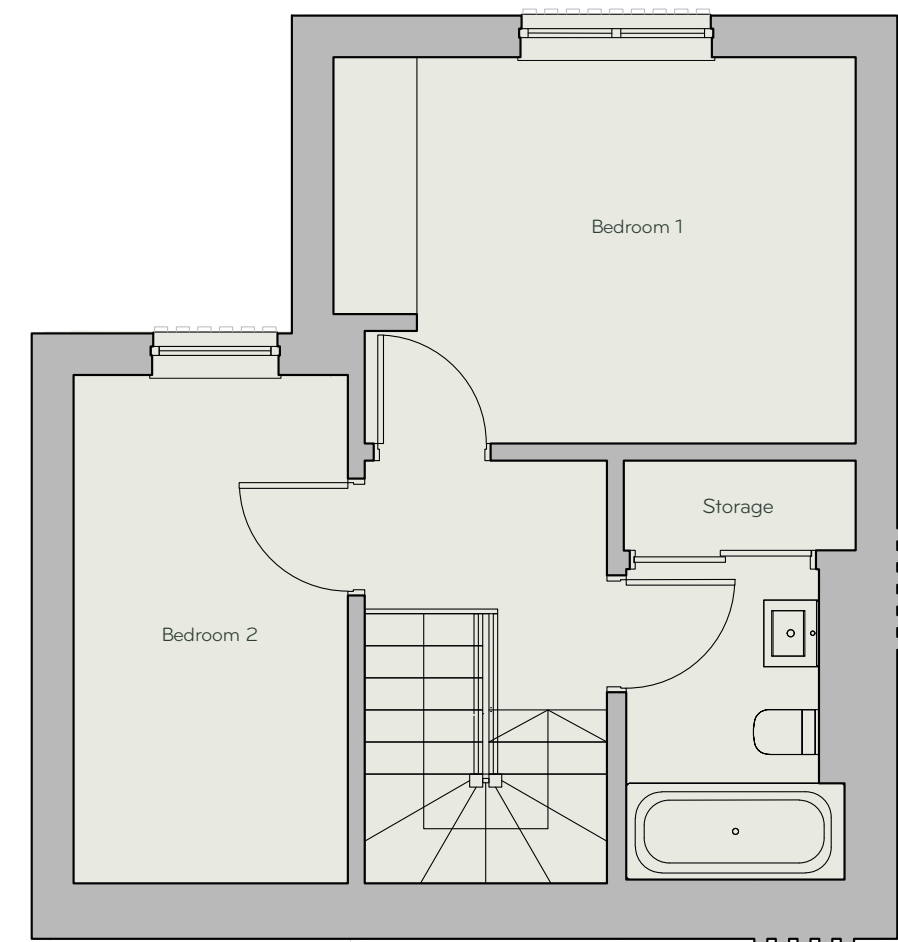
Total Area 72.0m² 775ft²

Kitchen / Living

6.0m x 5.7m (31.1m² 334.7ft²)

Garden / Patio

3.4m x 1.8m (6.0m² 64.5ft²)



Bedroom 1

3.0m x 4.0m (12.0m² 129.1ft²)

Bedroom 2

2.1m x 3.9m (8.4m² 90.4ft²)

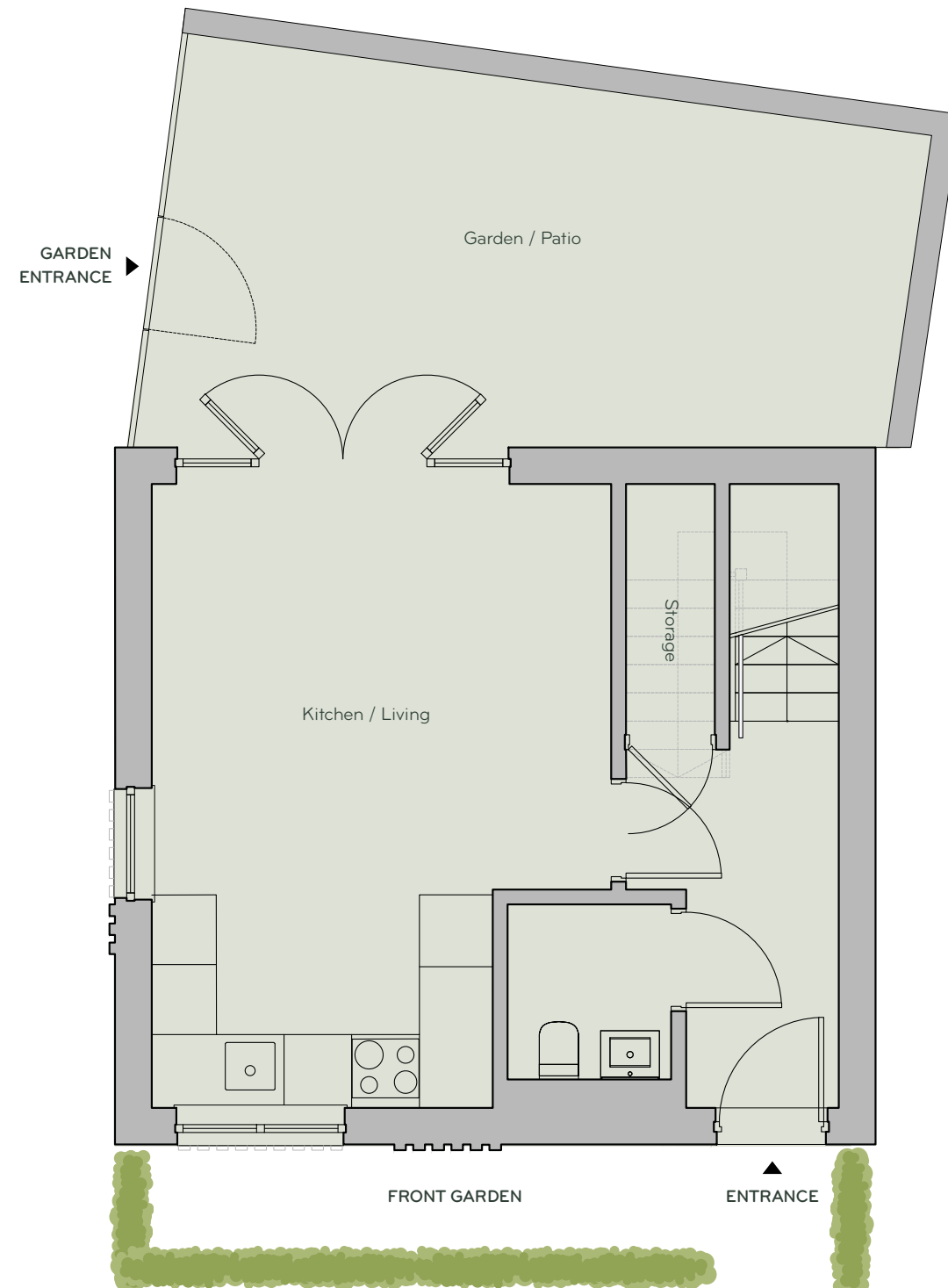
Bathroom

1.7m x 2.4m (3.7m² 39.8ft²)

Predicted Energy Assessment: EER Energy Efficiency Rating: 71C
EI CO² Environmental Impact: 74C



MEWS HOUSE 6 Ground Floor



MEWS HOUSE 6

Total Area 62.6m² 673.8ft²

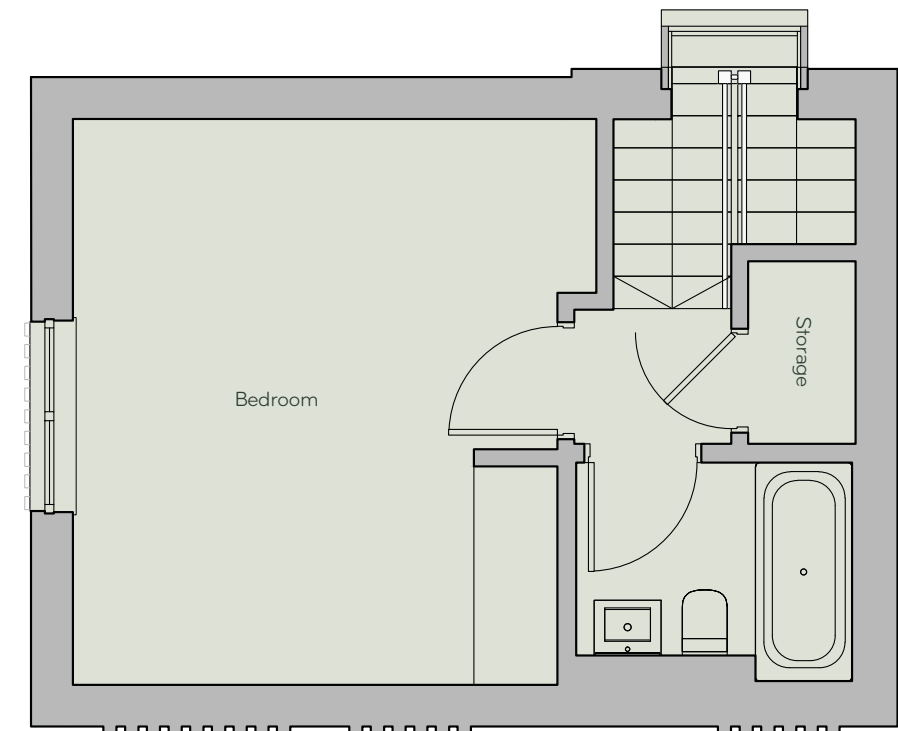
Kitchen / Living

4.0m x 5.5m (20.4m² 219.5ft²)

Garden / Patio

6.3m x 3.2m (21.7m² 233.5ft²)

MEWS HOUSE 6 First Floor



Bedroom

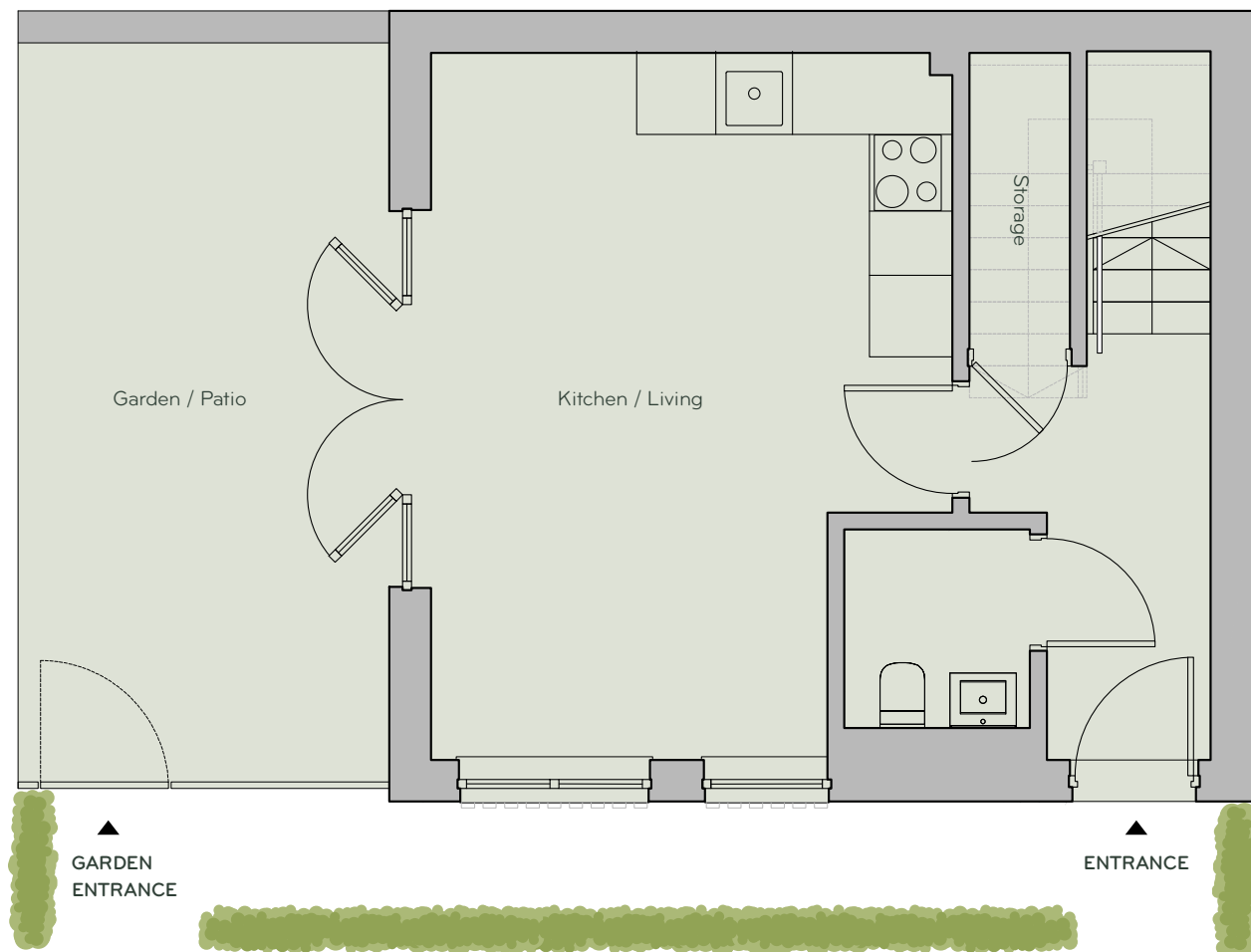
3.7m x 4.4m (17.0m² 182.9ft²)

Bathroom

2.1m x 1.7m (3.3m² 35.5ft²)



Predicted Energy Assessment: EER Energy Efficiency Rating: 73C
EI CO₂ Environmental Impact: 76C



MEWS HOUSES 7 & 8

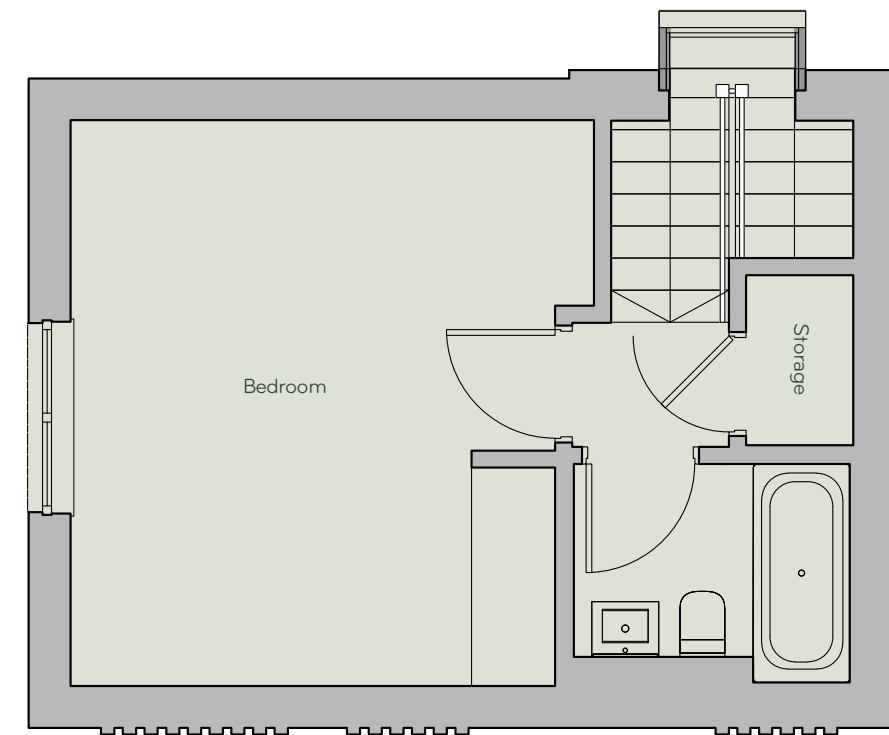
Total Area 62.4m² 671.6ft²

Kitchen / Living

4.0m x 5.5m (20.6m² 221.7ft²)

Garden / Patio

5.7m x 2.9m (16.8m² 180.8ft²)



Bedroom

3.7m x 4.4m (17.0m² 182.9ft²)

Bathroom

1.7m x 2.4m (3.7m² 39.8ft²)

Predicted Energy Assessment: EER Energy Efficiency Rating: 74C
EI CO² Environmental Impact: 76C



MEWS HOUSE 9 Ground Floor



MEWS HOUSE 9

Total Area 82.8m² 891.2ft²

Kitchen / Living

5.3m x 5.5m (28.7m² 308.9ft²)

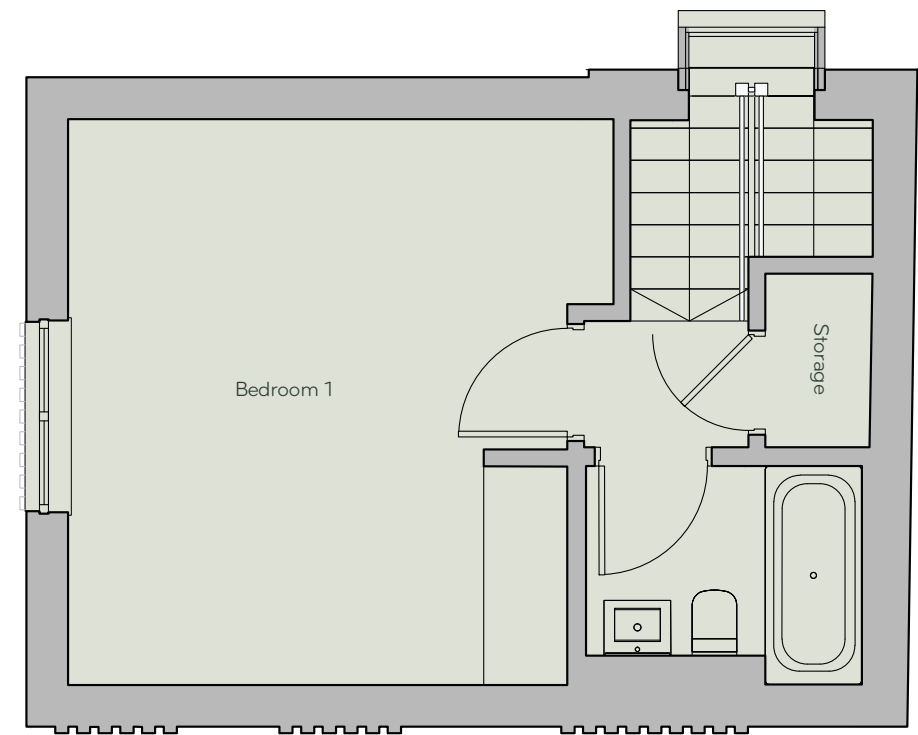
Bedroom 2

3.0m x 4.0m (2.2m² 23.6ft²)

Garden / Patio

3.2m x 8.5m (22.2m² 238.9ft²)

MEWS HOUSE 9 First Floor



Bedroom 1

3.8m x 4.4m (17.6m² 189.4ft²)

Bathroom

1.7m x 2.4m (3.7m² 39.8ft²)

Predicted Energy Assessment: EER Energy Efficiency Rating: 73C
EI CO² Environmental Impact: 76C

