

Apartment No.2 | 47.1m² | 507ft² total area

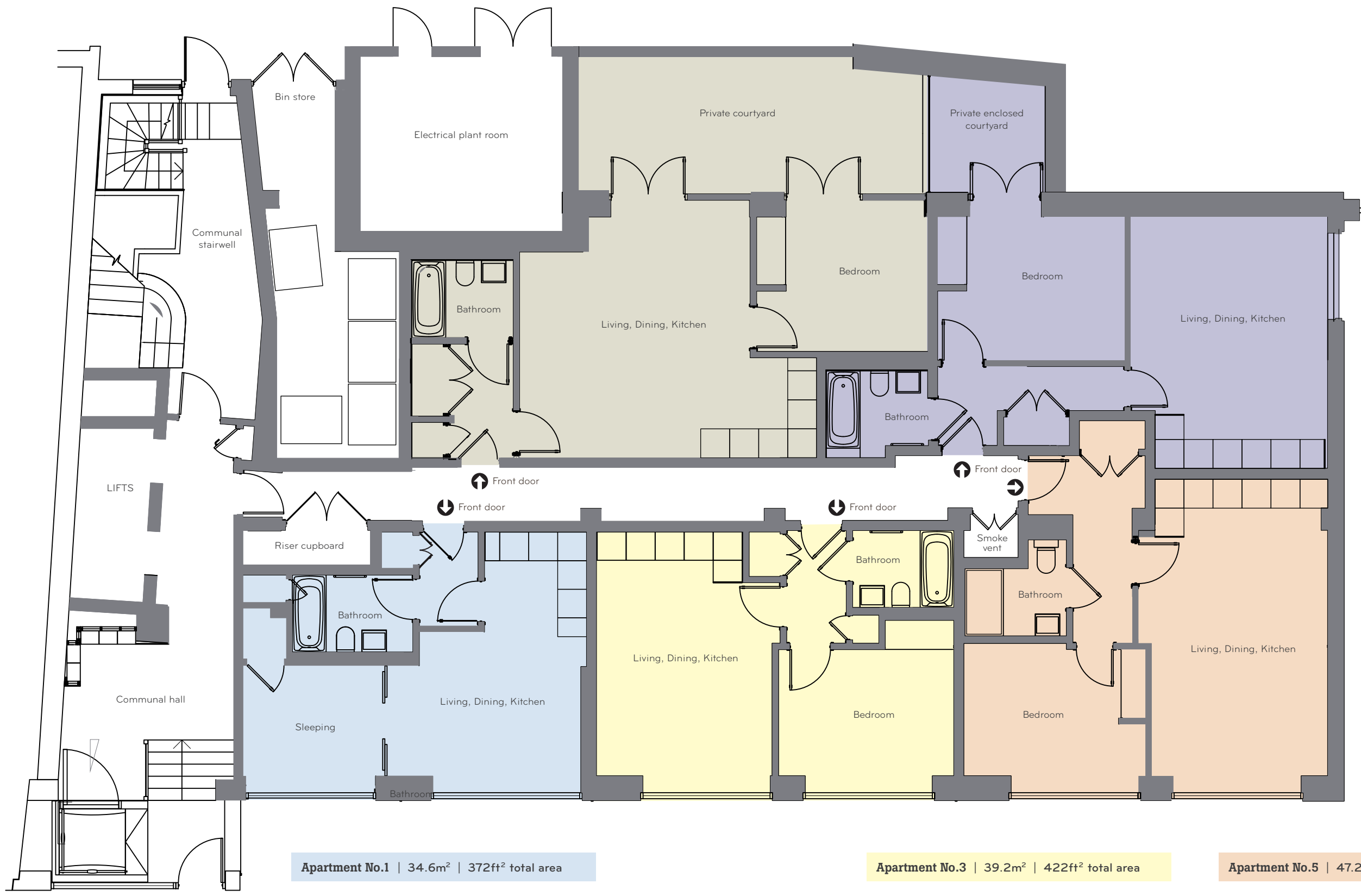
LIVING, DINING, KITCHEN
6.15m x 5.33m
(26.70m² | 287ft²)

BEDROOM
3.54m x 3.13m
(11.08m² | 119ft²)

Apartment No.4 | 43.2m² | 465ft² total area

LIVING, DINING, KITCHEN
4.08m x 5.20m
(21.20m² | 228ft²)

BEDROOM
3.87m x 3.31m
(12.80m² | 138ft²)



Apartment No.1 | 34.6m² | 372ft² total area

LIVING, DINING, KITCHEN
5.40m x 4.01m
(21.70m² | 233ft²)

SLEEPING
2.90m x 2.66m
(7.71m² | 83ft²)

Apartment No.3 | 39.2m² | 422ft² total area

LIVING, DINING, KITCHEN
5.39m x 3.64m
(19.60m² | 212ft²)

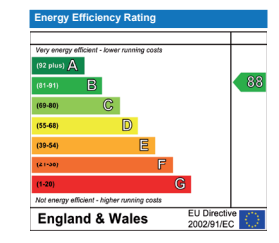
BEDROOM
3.63m x 3.57m
(12.95m² | 139ft²)

Apartment No.5 | 47.2m² | 508ft² total area

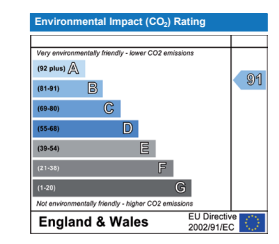
LIVING, DINING, KITCHEN
3.90m x 6.48m
(25.27m² | 272ft²)

BEDROOM
3.76m x 3.09m
(11.60m² | 125ft²)

Predicted Energy Performance



The energy efficiency rating is a measure of the overall efficiency of a home. The higher the rating the more energy efficient the home is and the lower the fuel bills are likely to be.



The environmental impact rating is a measure of a home's impact on the environment in terms of carbon dioxide (CO₂) emissions. The higher the rating, the less impact it has on the environment.

All measurements are gross internal areas. Balconies are not included in the calculation. Room sizes may be subject to minor alterations. Please refer to whittingtonhouse-n19.com for the most up-to-date floor plans.

Head Office: IDM Properties LLP, Office B, West Gainsborough, 1 Poole Street, London N1 5EA

T 020 7739 1650
F 020 7739 0731
E mail@idmproperties.com
W idmproperties.com



Apartment No.7 | 33.9m² | 365ft² total area

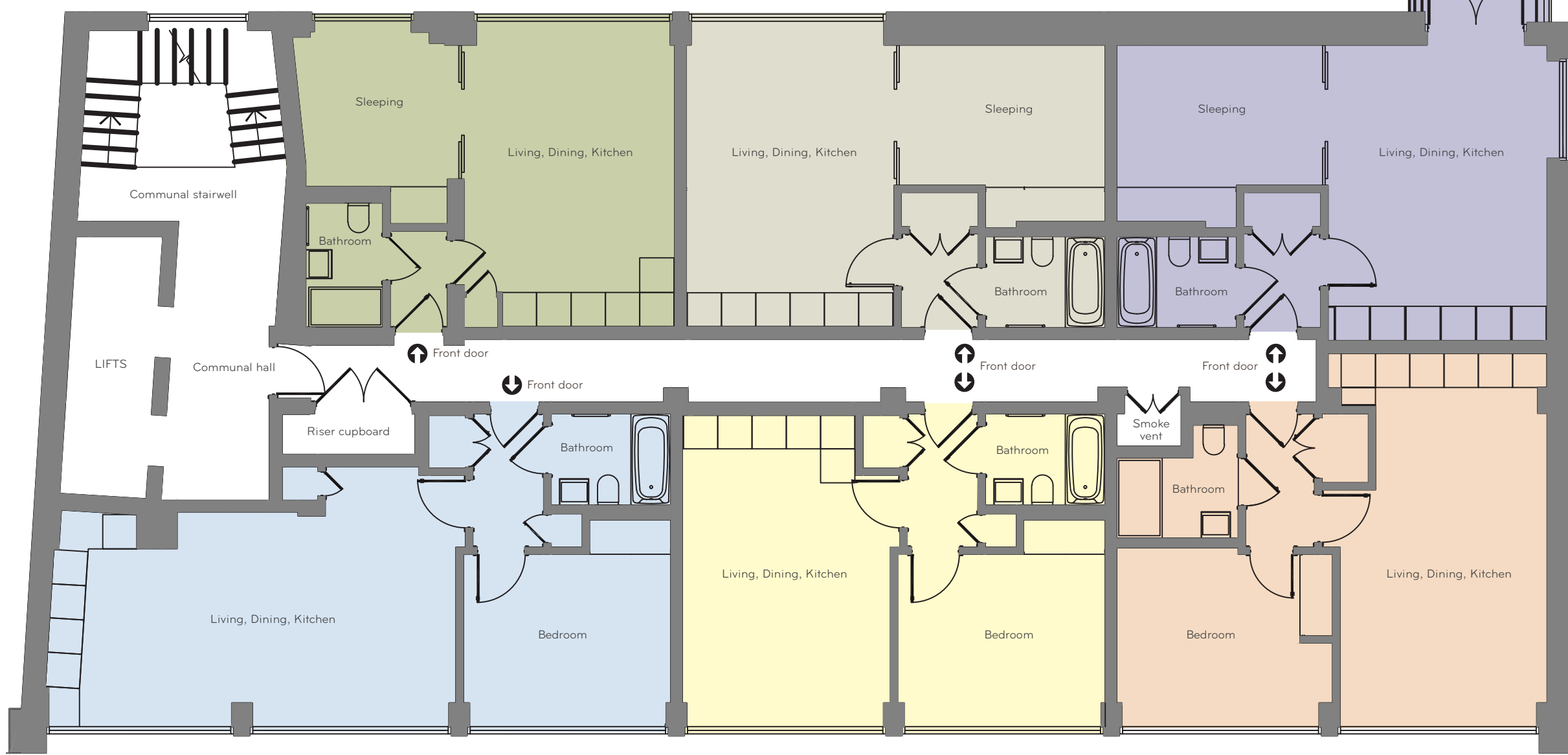
LIVING, DINING, KITCHEN 3.68m x 5.34m (19.60m² | 211ft²)
 SLEEPING 2.92m x 3.36m (8.00m² | 86ft²)

Apartment No.9 | 37.6m² | 405ft² total area

LIVING, DINING, KITCHEN 3.63m x 5.34m (19.38m² | 209ft²)
 SLEEPING 3.10m x 3.60m (10.24m² | 110ft²)

Apartment No.11 | 38.9m² | 419ft² total area

LIVING, DINING, KITCHEN 3.80m x 5.20m (19.80m² | 213ft²)
 SLEEPING 3.60m x 3.19m (10.24m² | 110ft²)



Apartment No.6 | 49.0m² | 527ft² total area

LIVING, DINING, KITCHEN 7.19m x 4.55m (28.30m² | 304ft²)
 BEDROOM 3.36m x 3.62m (11.60m² | 125ft²)

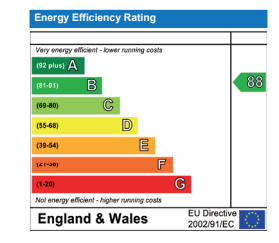
Apartment No.8 | 40.0m² | 430ft² total area

LIVING, DINING, KITCHEN 3.60m x 5.40m (19.44m² | 209ft²)
 BEDROOM 3.60m x 3.60m (11.60m² | 125ft²)

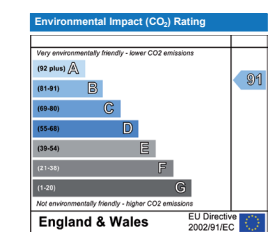
Apartment No.10 | 43.8m² | 471ft² total area

LIVING, DINING, KITCHEN 3.63m x 6.50m (23.50m² | 253ft²)
 BEDROOM 3.78m x 3.13m (11.8m² | 127ft²)

Predicted Energy Performance



The energy efficiency rating is a measure of the overall efficiency of a home. The higher the rating the more energy efficient the home is and the lower the fuel bills are likely to be.



The environmental impact rating is a measure of a home's impact on the environment in terms of carbon dioxide (CO₂) emissions. The higher the rating, the less impact it has on the environment.

All measurements are gross internal areas. Balconies are not included in the calculation. Room sizes may be subject to minor alterations. Please refer to whittingtonhouse-n19.com for the most up-to-date floor plans.

Head Office: IDM Properties LLP, Office B, West Gainsborough, 1 Poole Street, London N1 5EA

T 020 7739 1650
 F 020 7739 0731
 E mail@idmproperties.com
 W idmproperties.com



Apartment No.13 | 34.2m² | 368ft² total area

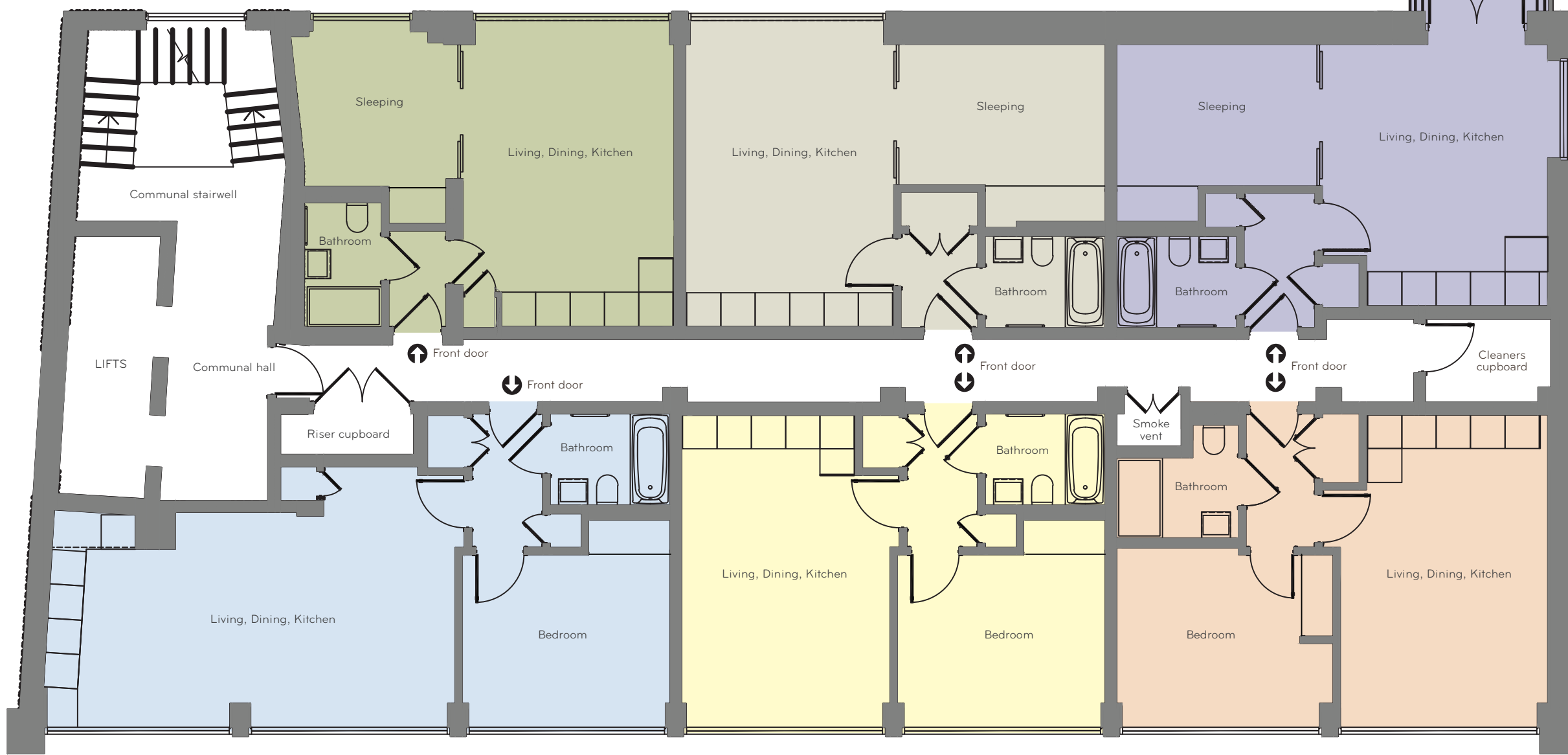
LIVING, DINING, KITCHEN 3.68m x 5.34m (19.60m² | 211ft²)
 SLEEPING 2.92m x 3.36m (8.00m² | 86ft²)

Apartment No.15 | 37.6m² | 405ft² total area

LIVING, DINING, KITCHEN 3.63m x 5.34m (19.38m² | 209ft²)
 SLEEPING 3.10m x 3.60m (10.24m² | 110ft²)

Apartment No.17 | 36.5m² | 393ft² total area

LIVING, DINING, KITCHEN 3.94m x 4.57m (18.00m² | 194ft²)
 SLEEPING 3.50m x 3.10m (9.50m² | 102ft²)



Apartment No.12 | 49.0m² | 527ft² total area

LIVING, DINING, KITCHEN 7.19m x 4.55m (28.30m² | 304ft²)
 BEDROOM 3.63m x 3.62m (11.60m² | 125ft²)

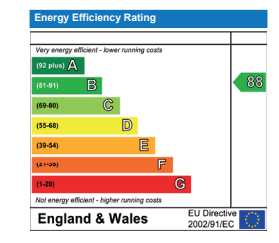
Apartment No.14 | 40.2m² | 433ft² total area

LIVING, DINING, KITCHEN 3.60m x 5.40m (19.44m² | 209ft²)
 BEDROOM 3.60m x 3.60m (11.60m² | 125ft²)

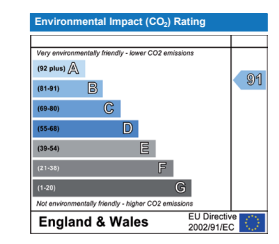
Apartment No.16 | 39.8m² | 428ft² total area

LIVING, DINING, KITCHEN 3.62m x 5.48m (19.70m² | 212ft²)
 BEDROOM 3.78m x 3.13m (11.80m² | 127ft²)

Predicted Energy Performance



The energy efficiency rating is a measure of the overall efficiency of a home. The higher the rating the more energy efficient the home is and the lower the fuel bills are likely to be.



The environmental impact rating is a measure of a home's impact on the environment in terms of carbon dioxide (CO₂) emissions. The higher the rating, the less impact it has on the environment.

All measurements are gross internal areas. Balconies are not included in the calculation. Room sizes may be subject to minor alterations. Please refer to whittingtonhouse-n19.com for the most up-to-date floor plans.

Head Office: IDM Properties LLP, Office B, West Gainsborough, 1 Poole Street, London N1 5EA

T 020 7739 1650
 F 020 7739 0731
 E mail@idmproperties.com
 W idmproperties.com



Apartment No.19 | 34.0m² | 366ft² total area

LIVING, DINING, KITCHEN 3.68m x 5.34m (19.60m² | 211ft²)
 SLEEPING 2.92m x 3.36m (8.00m² | 86ft²)

Apartment No.21 | 39.0m² | 420ft² total area

LIVING, DINING, KITCHEN 5.34m x 3.53m (18.80m² | 202ft²)
 BEDROOM 3.51m x 3.60m (11.38m² | 122ft²)

Apartment No.23 | 36.9m² | 397ft² total area

LIVING, DINING, KITCHEN 3.73m x 4.50m (17.78m² | 181ft²)
 BEDROOM 3.60m x 3.10m (9.90m² | 107ft²)



Apartment No.18 | 49.1m² | 528ft² total area

LIVING, DINING, KITCHEN 7.19m x 4.55m (28.30m² | 304ft²)
 BEDROOM 3.63m x 3.62m (11.60m² | 125ft²)

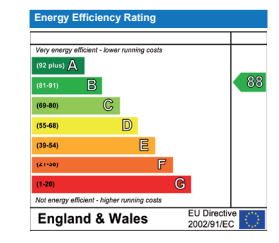
Apartment No.20 | 40.0m² | 430ft² total area

LIVING, DINING, KITCHEN 3.60m x 5.64m (19.44m² | 209ft²)
 BEDROOM 3.6m x 3.6m (11.60m² | 125ft²)

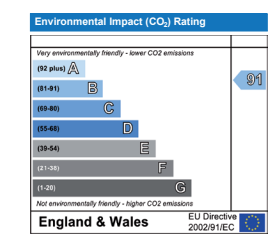
Apartment No.22 | 39.8m² | 428ft² total area

LIVING, DINING, KITCHEN 3.62m x 5.45m (19.70m² | 212ft²)
 BEDROOM 3.78m x 3.13m (11.80m² | 127ft²)

Predicted Energy Performance



The energy efficiency rating is a measure of the overall efficiency of a home. The higher the rating the more energy efficient the home is and the lower the fuel bills are likely to be.



The environmental impact rating is a measure of a home's impact on the environment in terms of carbon dioxide (CO₂) emissions. The higher the rating, the less impact it has on the environment.

All measurements are gross internal areas. Balconies are not included in the calculation. Room sizes may be subject to minor alterations. Please refer to whittingtonhouse-n19.com for the most up-to-date floor plans.

Head Office: IDM Properties LLP, Office B, West Gainsborough, 1 Poole Street, London N1 5EA

T 020 7739 1650
 F 020 7739 0731
 E mail@idmproperties.com
 W idmproperties.com



Apartment No.25 | 34.0m² | 366ft² total area

LIVING, DINING, KITCHEN 3.68m x 5.34m (19.60m² | 211ft²)
 SLEEPING 2.92m x 3.36m (8.00m² | 86ft²)

Apartment No.27 | 39.3m² | 423ft² total area

LIVING, DINING, KITCHEN 5.34m x 3.53m (18.80m² | 202ft²)
 BEDROOM 3.51m x 3.60m (11.38m² | 122ft²)

Apartment No.29 | 43.8m² | 471ft² total area

LIVING, DINING, KITCHEN 3.73m x 5.17m (19.20m² | 207ft²)
 BEDROOM 3.67m x 3.51m (11.36m² | 122ft²)



Apartment No.24 | 49.0m² | 527ft² total area

LIVING, DINING, KITCHEN 7.19m x 4.55m (28.30m² | 304ft²)
 BEDROOM 3.63m x 3.62m (11.60m² | 125ft²)

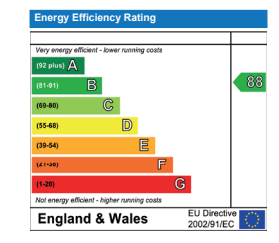
Apartment No.26 | 40.0m² | 430ft² total area

LIVING, DINING, KITCHEN 3.60m x 5.40m (19.44m² | 209ft²)
 BEDROOM 3.60m x 3.60m (11.60m² | 125ft²)

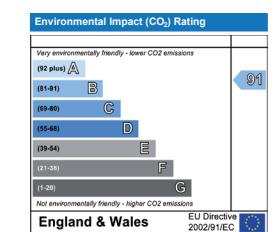
Apartment No.28 | 40.6m² | 437ft² total area

LIVING, DINING, KITCHEN 3.63m x 6.50m (23.50m² | 253ft²)
 BEDROOM 3.78m x 3.13m (11.80m² | 127ft²)

Predicted Energy Performance



The energy efficiency rating is a measure of the overall efficiency of a home. The higher the rating the more energy efficient the home is and the lower the fuel bills are likely to be.



The environmental impact rating is a measure of a home's impact on the environment in terms of carbon dioxide (CO₂) emissions. The higher the rating, the less impact it has on the environment.

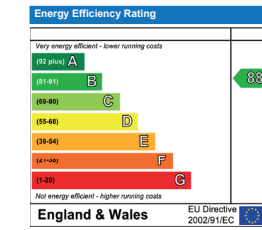
All measurements are gross internal areas. Balconies are not included in the calculation. Room sizes may be subject to minor alterations. Please refer to whittingtonhouse-n19.com for the most up-to-date floor plans.

Head Office: IDM Properties LLP, Office B, West Gainsborough, 1 Poole Street, London N1 5EA

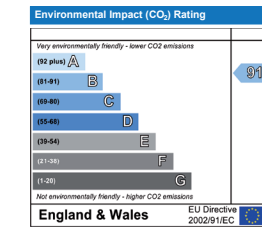
T 020 7739 1650
 F 020 7739 0731
 E mail@idmproperties.com
 W idmproperties.com



Predicted Energy Performance



The energy efficiency rating is a measure of the overall efficiency of a home. The higher the rating the more energy efficient the home is and the lower the fuel bills are likely to be.



The environmental impact rating is a measure of a home's impact on the environment in terms of carbon dioxide (CO₂) emissions. The higher the rating, the less impact it has on the environment.

All measurements are gross internal areas. Balconies are not included in the calculation. Room sizes may be subject to minor alterations. Please refer to whittingtonhouse-n19.com for the most up-to-date floor plans.

Head Office: IDM Properties LLP, Office B, West Gainsborough, 1 Poole Street, London N1 5EA

T 020 7739 1650
F 020 7739 0731
E mail@idmproperties.com
W idmproperties.com



Apartment No.31 | 34.6m² | 372ft² total area

LIVING, DINING, KITCHEN 3.68m x 5.34m (19.60m² | 211ft²)
SLEEPING 2.92m x 3.36m (8.00m² | 86ft²)

Apartment No.33 | 39.0m² | 420ft² total area

LIVING, DINING, KITCHEN 5.34m x 3.53m (18.80m² | 202ft²)
BEDROOM 3.51m x 3.60m (11.38m² | 122ft²)

Apartment No.35 | 38.2m² | 411ft² total area

LIVING, DINING, KITCHEN 3.73m x 4.50m (17.78m² | 181ft²)
BEDROOM 3.60m x 3.10m (9.90m² | 107ft²)



Apartment No.30 | 49.1m² | 528ft² total area

LIVING, DINING, KITCHEN 7.19m x 4.55m (28.30m² | 304ft²)
BEDROOM 3.63m x 3.62m (11.60m² | 125ft²)

Apartment No.32 | 40.0m² | 433ft² total area

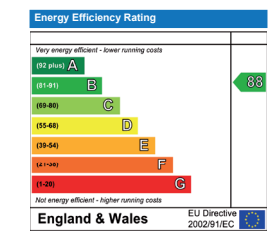
LIVING, DINING, KITCHEN 3.60m x 5.40m (19.44m² | 209ft²)
BEDROOM 3.60m x 3.60m (11.60m² | 125ft²)

Apartment No.34 | 39.8m² | 428ft² total area

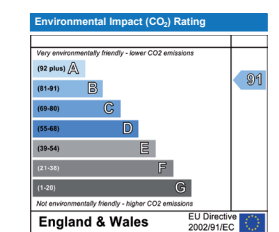
LIVING, DINING, KITCHEN 3.62m x 5.45m (19.70m² | 212ft²)
BEDROOM 3.78m x 3.13m (11.80m² | 127ft²)



Predicted Energy Performance



The energy efficiency rating is a measure of the overall efficiency of a home. The higher the rating the more energy efficient the home is and the lower the fuel bills are likely to be.



The environmental impact rating is a measure of a home's impact on the environment in terms of carbon dioxide (CO₂) emissions. The higher the rating, the less impact it has on the environment.

All measurements are gross internal areas. Balconies are not included in the calculation. Room sizes may be subject to minor alterations. Please refer to whittingtonhouse-n19.com for the most up-to-date floor plans.

Head Office: IDM Properties LLP, Office B, West Gainsborough, 1 Poole Street, London N1 5EA

T 020 7739 1650
F 020 7739 0731
E mail@idmproperties.com
W idmproperties.com

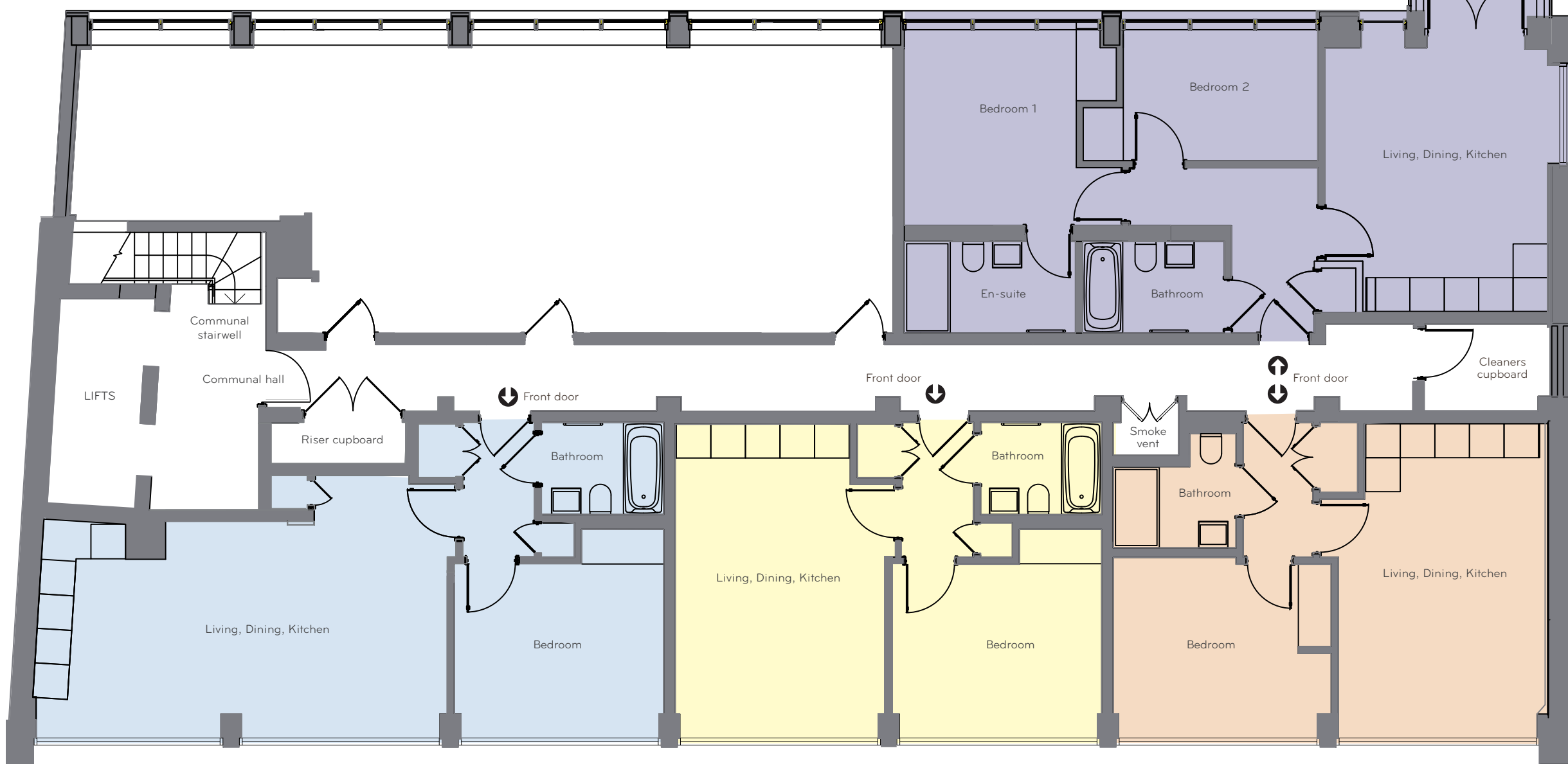


Apartment No.39 | 59.0m² | 635ft² total area

LIVING, DINING, KITCHEN
3.88m x 4.57m
(17.73m² | 191ft²)

BEDROOM
3.80m x 3.66m
(12.56m² | 135ft²)

BEDROOM 2
4.09m x 2.53m
(9.22m² | 99ft²)



Apartment No.36 | 49.1m² | 528ft² total area

LIVING, DINING, KITCHEN
7.19m x 4.55m
(28.30m² | 304ft²)

BEDROOM
3.63m x 3.62m
(11.60m² | 125ft²)

Apartment No.37 | 40.2m² | 433ft² total area

LIVING, DINING, KITCHEN
3.60m x 5.40m
(19.44m² | 209ft²)

BEDROOM
3.60m x 3.60m
(11.60m² | 125ft²)

Apartment No.38 | 39.8m² | 428ft² total area

LIVING, DINING, KITCHEN
3.62m x 5.45m
(19.73m² | 212ft²)

BEDROOM
3.78m x 3.13m
(11.50m² | 124ft²)

