

House No.1 | 163m<sup>2</sup> | 1759ft<sup>2</sup> total area

#### GROUND FLOOR

LIVING, DINING, KITCHEN (COMBINED)  
16.6m x 6.8m (62.9m<sup>2</sup> | 677ft<sup>2</sup>)

LIVING  
6.8m x 4.0m (30.3m<sup>2</sup> | 326ft<sup>2</sup>)

DINING  
4.1m x 3.5m (14.2m<sup>2</sup> | 153ft<sup>2</sup>)

KITCHEN  
6.3m x 3.4m (18.4m<sup>2</sup> | 198ft<sup>2</sup>)

GARDEN  
7.9m x 7.2m (39.4m<sup>2</sup> | 423ft<sup>2</sup>)

#### FIRST FLOOR

BEDROOM 1 (WITH ENSUITE)  
5.7m x 3.4m (14.6m<sup>2</sup> | 157ft<sup>2</sup>)

BEDROOM 2  
3.9m x 3.3m (11.4m<sup>2</sup> | 123ft<sup>2</sup>)

BALCONY  
3.3m x 1.2m (3.8m<sup>2</sup> | 41ft<sup>2</sup>)

#### SECOND FLOOR

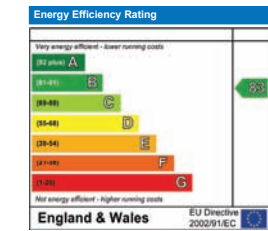
BEDROOM 3 (WITH ENSUITE)  
4.9m x 3.4m (13.1m<sup>2</sup> | 141ft<sup>2</sup>)

BEDROOM 4  
3.2m x 3.2m (10.2m<sup>2</sup> | 110ft<sup>2</sup>)

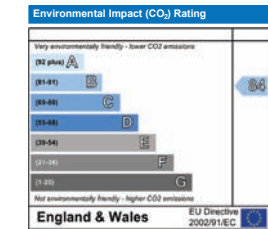
BALCONY  
3.3m x 0.9m (2.9m<sup>2</sup> | 31ft<sup>2</sup>)



#### Predicted Energy Performance



The energy efficiency rating is a measure of the overall efficiency of a home. The higher the rating the more energy efficient the home is and the lower the fuel bills are likely to be.



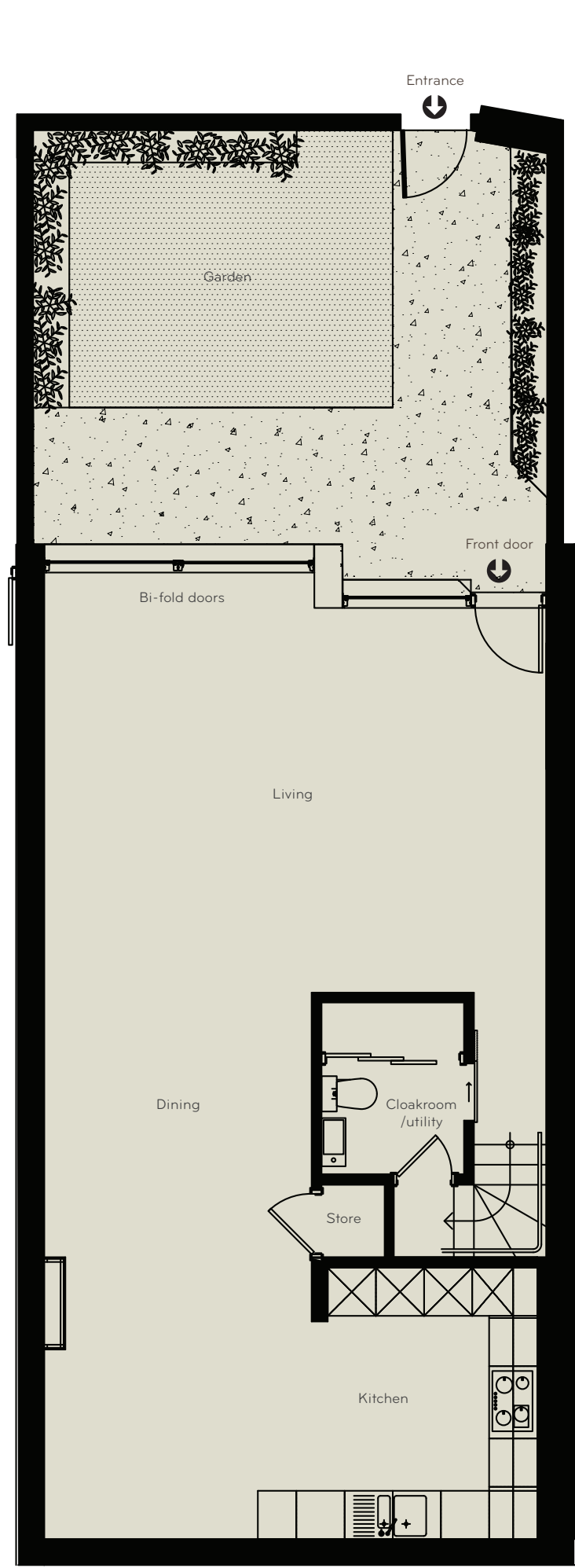
The environmental impact rating is a measure of a home's impact on the environment in terms of carbon dioxide (CO<sub>2</sub>) emissions. The higher the rating, the less impact it has on the environment.

All measurements are gross internal areas.  
Gardens are not included in the calculation.  
Room sizes may be subject to minor alterations.

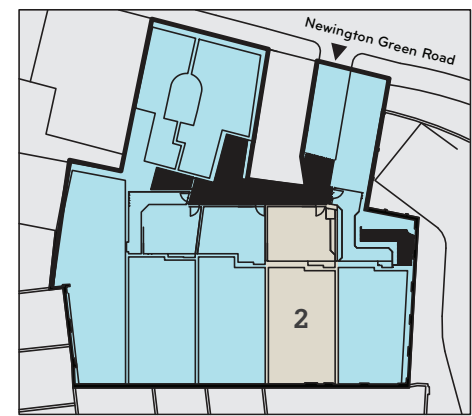
Head Office: IDM Properties LLP  
Office B, West Gainsborough  
1 Poole Street, London N1 5EA

T 020 7739 1650 F 020 7739 0731  
E mail@idmproperties.com  
W idmproperties.com

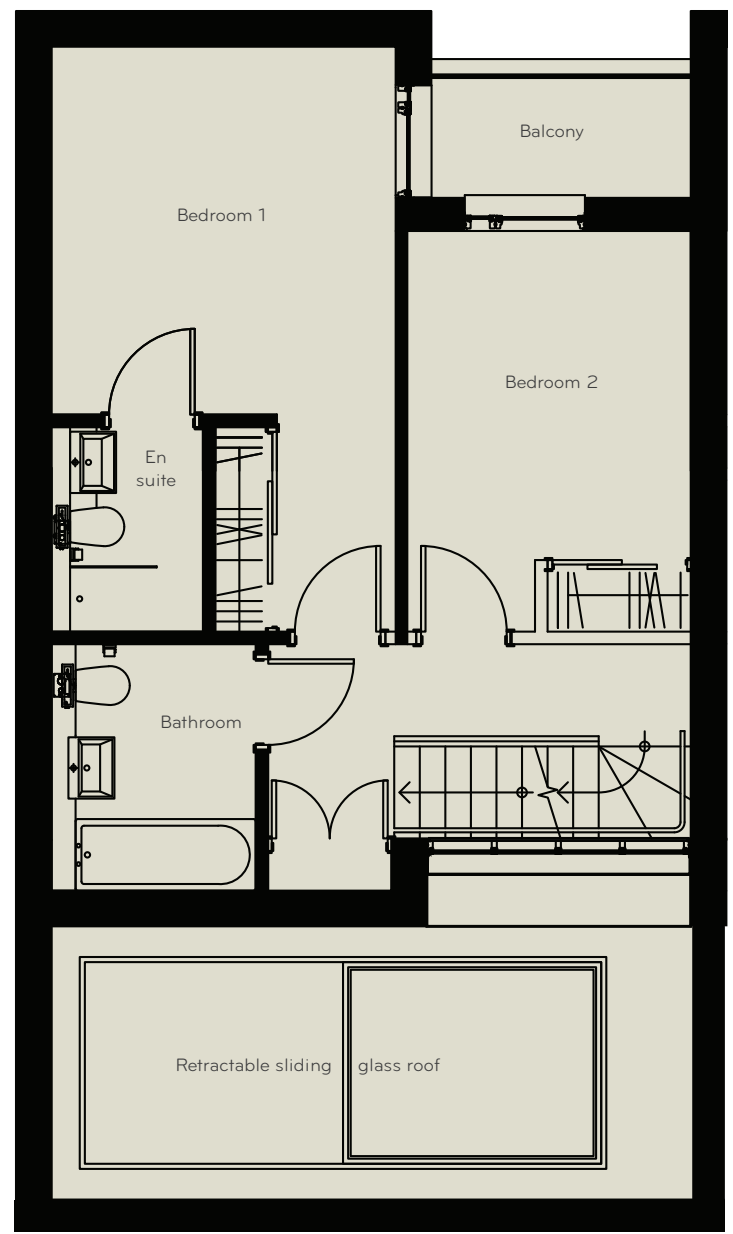




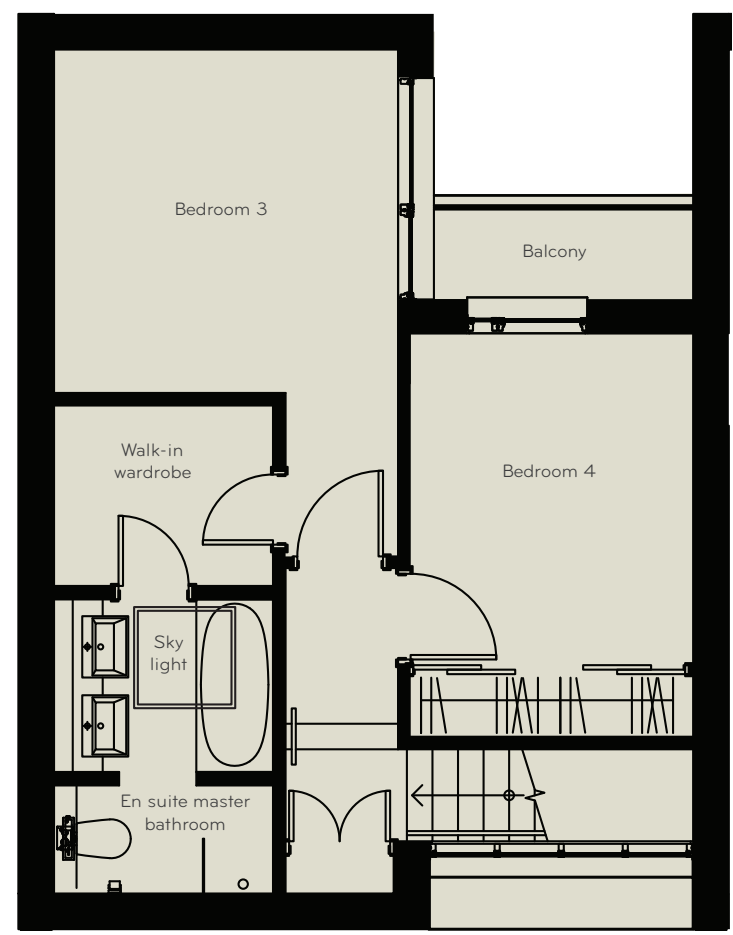
GROUND FLOOR



House No.2   159m <sup>2</sup>   1711ft <sup>2</sup> total area	
GROUND FLOOR	FIRST FLOOR
LIVING, DINING, KITCHEN (COMBINED) 15.6m x 6.1m (62.3m <sup>2</sup>   668ft <sup>2</sup> )	BEDROOM 1 (WITH ENSUITE) 5.7m x 3.4m (14.6m <sup>2</sup>   157ft <sup>2</sup> )
LIVING 6.2m x 5.2m (30.1m <sup>2</sup>   324ft <sup>2</sup> )	BEDROOM 2 3.9m x 2.8m (10.9m <sup>2</sup>   117ft <sup>2</sup> )
DINING 4.1m x 3.3m (13.6m <sup>2</sup>   146ft <sup>2</sup> )	BALCONY 2.5m x 1.2m (3.0m <sup>2</sup>   32ft <sup>2</sup> )
KITCHEN 6.1m x 3.4m (18.4m <sup>2</sup>   198ft <sup>2</sup> )	SECOND FLOOR
GARDEN 6.4m x 6.0m (33.9m <sup>2</sup>   365ft <sup>2</sup> )	BEDROOM 3 (WITH ENSUITE) 4.9m x 3.4m (13.0m <sup>2</sup>   141ft <sup>2</sup> )
	BEDROOM 4 3.9m x 2.8m (10.9m <sup>2</sup>   117ft <sup>2</sup> )
	BALCONY 2.5m x 0.9m (2.2m <sup>2</sup>   24ft <sup>2</sup> )

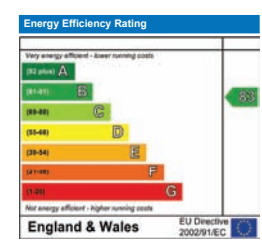


FIRST FLOOR

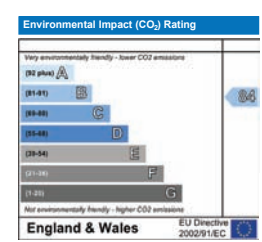


SECOND FLOOR

Predicted Energy Performance



The energy efficiency rating is a measure of the overall efficiency of a home. The higher the rating the more energy efficient the home is and the lower the fuel bills are likely to be.



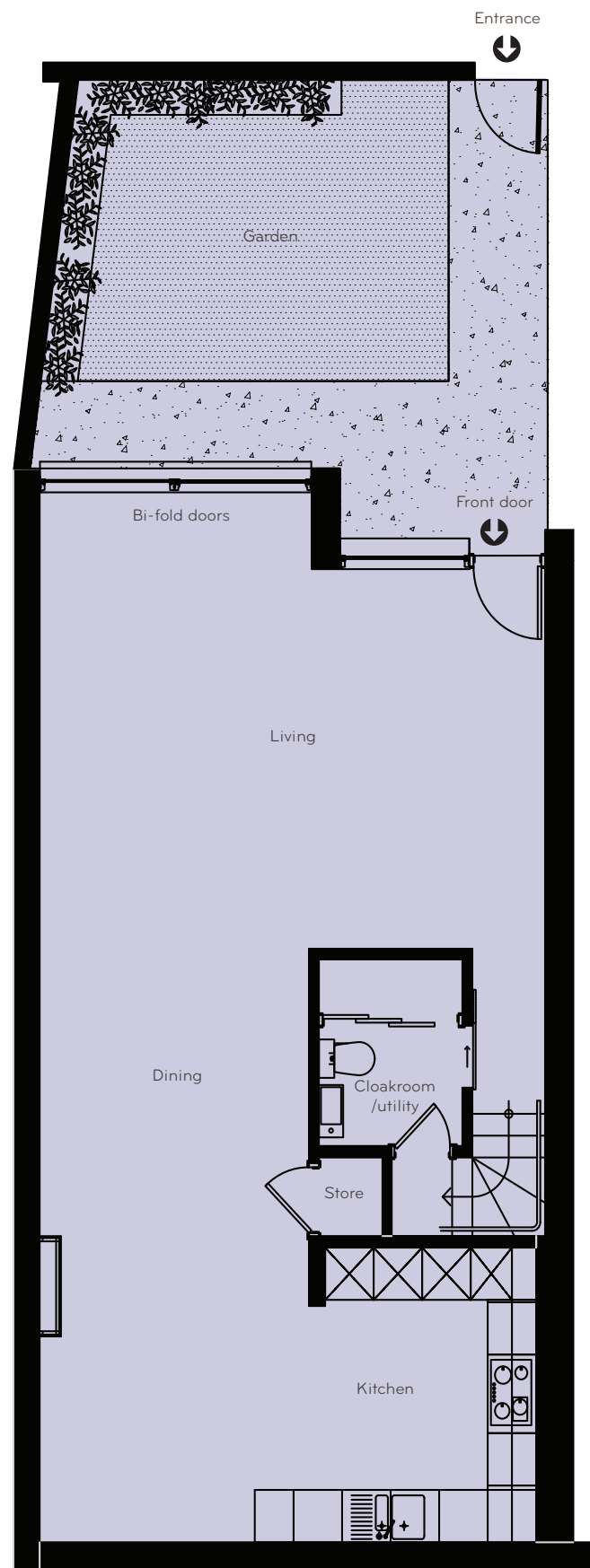
The environmental impact rating is a measure of a home's impact on the environment in terms of carbon dioxide (CO<sub>2</sub>) emissions. The higher the rating, the less impact it has on the environment.

All measurements are gross internal areas. Gardens are not included in the calculation. Room sizes may be subject to minor alterations.

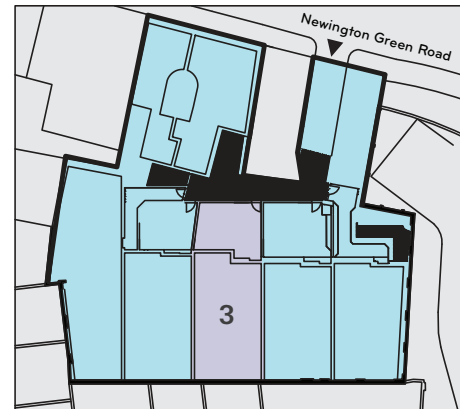
Head Office: IDM Properties LLP, Office B, West Gainsborough, 1 Poole Street, London N1 5EA

T 020 7739 1650 F 020 7739 0731  
E mail@idmproperties.com W idmproperties.com





GROUND FLOOR



House No.3 | 163m<sup>2</sup> | 1759ft<sup>2</sup> total area

#### GROUND FLOOR

LIVING, DINING, KITCHEN (COMBINED)  
15.6m x 6.2m (62m<sup>2</sup> | 667ft<sup>2</sup>)

LIVING  
6.2m x 5.2m (29.7m<sup>2</sup> | 320ft<sup>2</sup>)

DINING  
4.2m x 3.3m (13.9m<sup>2</sup> | 149ft<sup>2</sup>)

KITCHEN  
6.1m x 3.3m (18.4m<sup>2</sup> | 198ft<sup>2</sup>)

GARDEN  
6.4m x 5.2m (29.2m<sup>2</sup> | 314ft<sup>2</sup>)

#### FIRST FLOOR

BEDROOM 1 (WITH ENSUITE)  
6.4m x 3.4m (18.1m<sup>2</sup> | 195ft<sup>2</sup>)

BEDROOM 2  
3.9m x 2.8m (10.8m<sup>2</sup> | 116ft<sup>2</sup>)

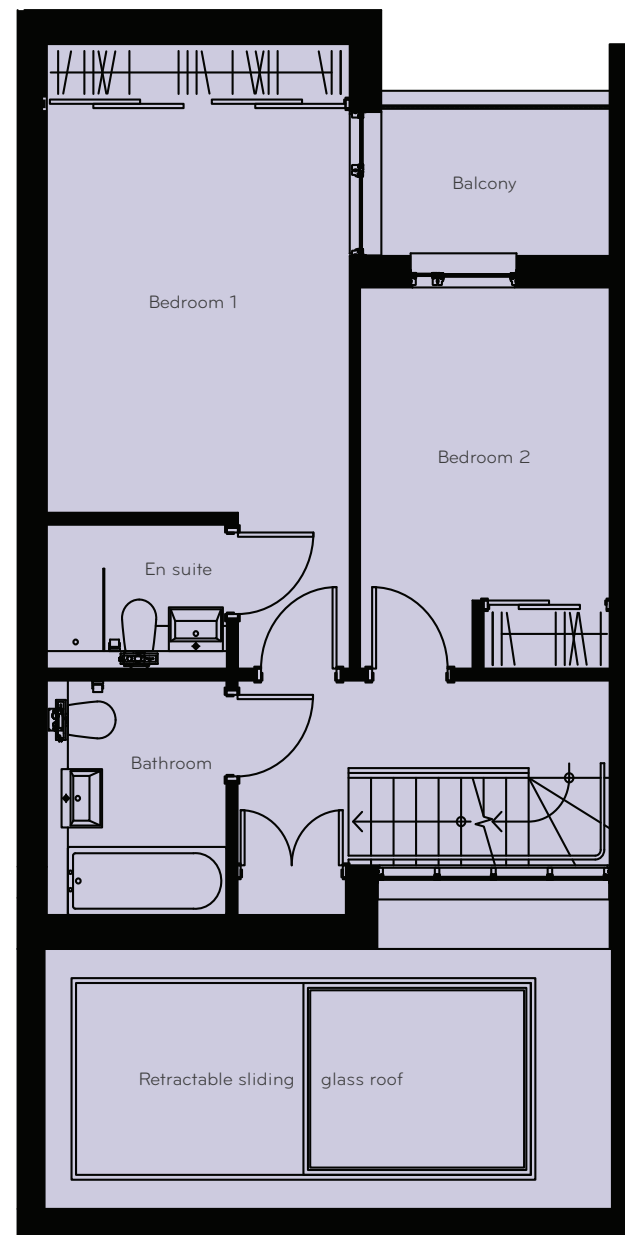
BALCONY  
2.5m x 1.5m (3.8m<sup>2</sup> | 41ft<sup>2</sup>)

#### SECOND FLOOR

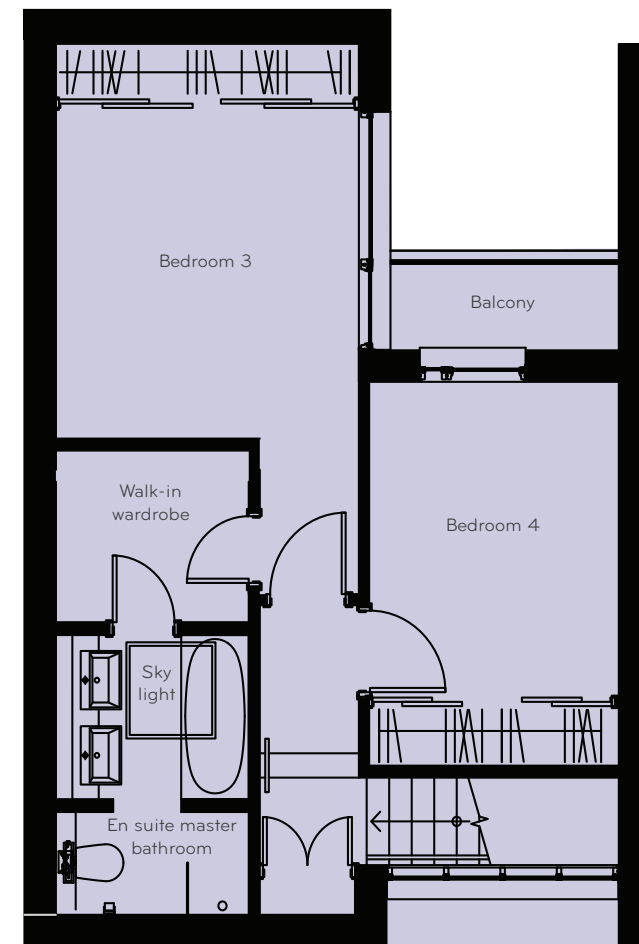
BEDROOM 3 (WITH ENSUITE)  
5.6m x 3.4m (15.4m<sup>2</sup> | 166ft<sup>2</sup>)

BEDROOM 4  
3.9m x 2.8m (10.9m<sup>2</sup> | 117ft<sup>2</sup>)

BALCONY  
2.5m x 0.9m (2.2m<sup>2</sup> | 24ft<sup>2</sup>)

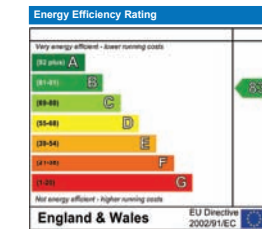


FIRST FLOOR

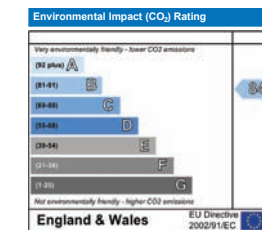


SECOND FLOOR

#### Predicted Energy Performance



The energy efficiency rating is a measure of the overall efficiency of a home. The higher the rating the more energy efficient the home is and the lower the fuel bills are likely to be.



The environmental impact rating is a measure of a home's impact on the environment in terms of carbon dioxide (CO<sub>2</sub>) emissions. The higher the rating, the less impact it has on the environment.

All measurements are gross internal areas. Gardens are not included in the calculation. Room sizes may be subject to minor alterations.

Head Office: IDM Properties LLP, Office B,  
West Gainsborough, 1 Poole Street, London N1 5EA

T 020 7739 1650 F 020 7739 0731  
E mail@idmproperties.com W idmproperties.com



House No.4 | 165m<sup>2</sup> | 1776ft<sup>2</sup> total area

#### GROUND FLOOR

LIVING, DINING, KITCHEN (COMBINED)  
15.6m x 6.2m (63.3m<sup>2</sup> | 681ft<sup>2</sup>)

LIVING  
6.2m x 5.2m (31.3m<sup>2</sup> | 337ft<sup>2</sup>)

DINING  
4.1m x 3.3m (13.6m<sup>2</sup> | 146ft<sup>2</sup>)

KITCHEN  
6.1m x 3.4m (18.4m<sup>2</sup> | 198ft<sup>2</sup>)

GARDEN  
5.4m x 4.7m (22.8m<sup>2</sup> | 245ft<sup>2</sup>)

#### FIRST FLOOR

BEDROOM 1 (WITH ENSUITE)  
6.4m x 3.4m (18.2m<sup>2</sup> | 196ft<sup>2</sup>)

BEDROOM 2  
3.9m x 2.8m (10.8m<sup>2</sup> | 116ft<sup>2</sup>)

BALCONY  
2.5m x 2.0m (5.0m<sup>2</sup> | 54ft<sup>2</sup>)

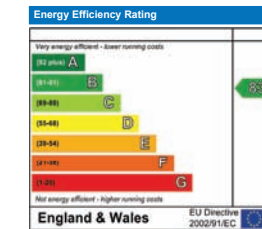
#### SECOND FLOOR

BEDROOM 3 (WITH ENSUITE)  
5.7m x 3.4m (15.4m<sup>2</sup> | 166ft<sup>2</sup>)

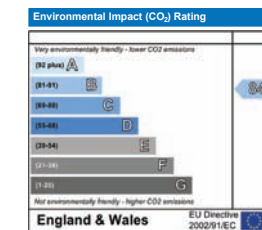
BEDROOM 4  
3.9m x 2.8m (10.9m<sup>2</sup> | 117ft<sup>2</sup>)

BALCONY  
2.5m x 0.9m (2.2m<sup>2</sup> | 24ft<sup>2</sup>)

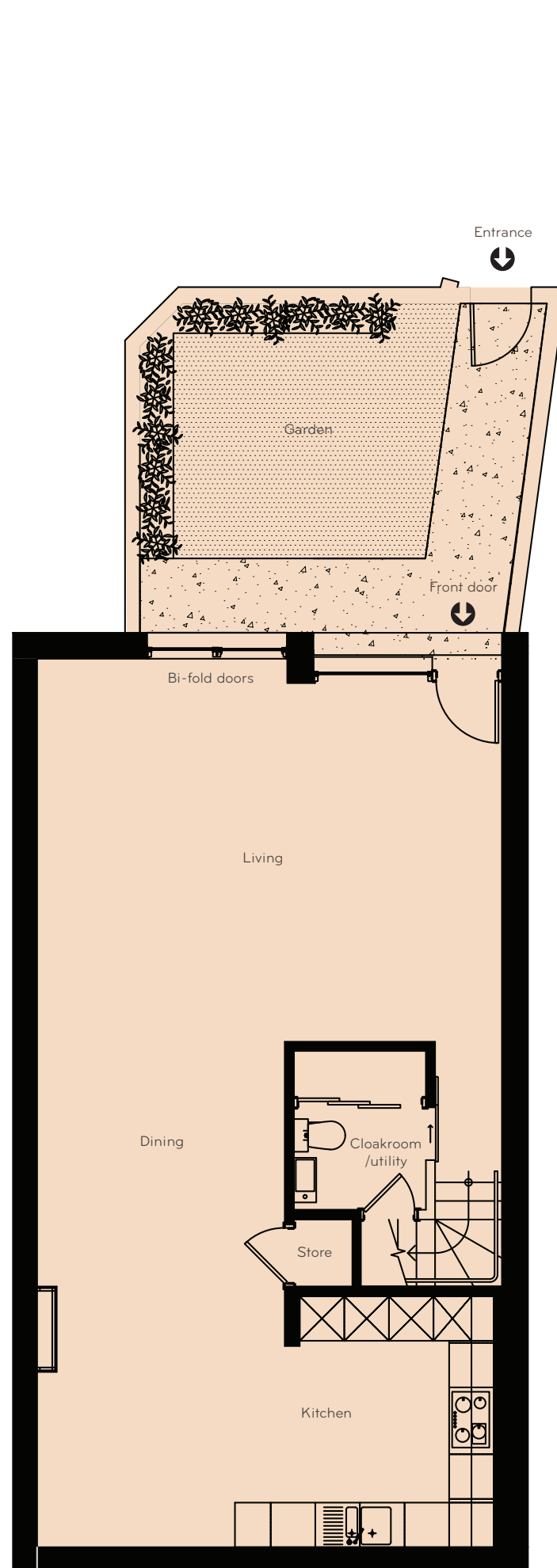
#### Predicted Energy Performance



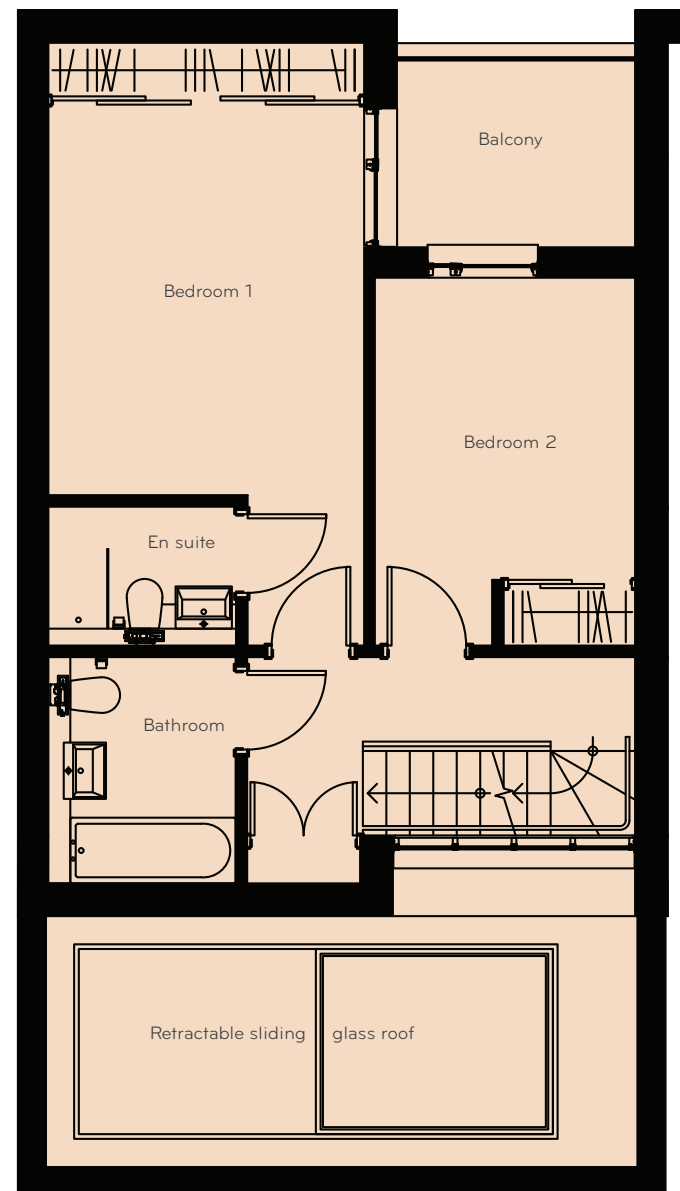
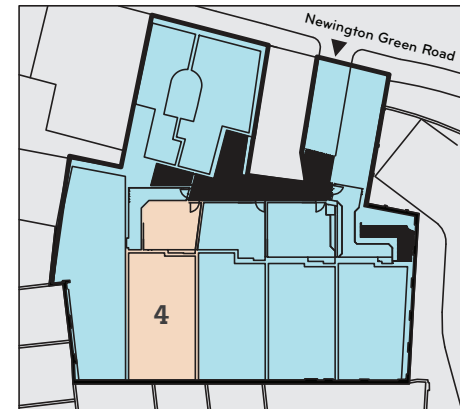
The energy efficiency rating is a measure of the overall efficiency of a home. The higher the rating the more energy efficient the home is and the lower the fuel bills are likely to be.



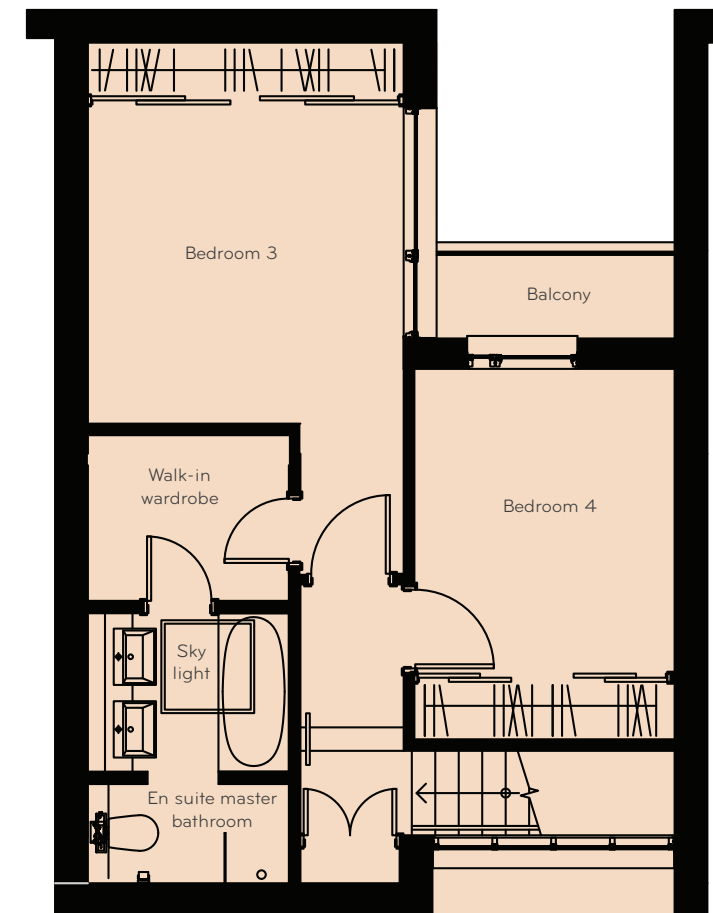
The environmental impact rating is a measure of a home's impact on the environment in terms of carbon dioxide (CO<sub>2</sub>) emissions. The higher the rating, the less impact it has on the environment.



GROUND FLOOR



FIRST FLOOR



SECOND FLOOR

All measurements are gross internal areas. Gardens are not included in the calculation. Room sizes may be subject to minor alterations.

Head Office: IDM Properties LLP, Office B,  
West Gainsborough, 1 Poole Street, London N1 5EA

T 020 7739 1650 F 020 7739 0731  
E mail@idmproperties.com W idmproperties.com



House No.5 | 152m<sup>2</sup> | 1644ft<sup>2</sup> total area

## GROUND FLOOR

LIVING, DINING, KITCHEN (COMBINED)  
10.2m x 5.3m (42.9m<sup>2</sup> | 462ft<sup>2</sup>)

LIVING  
5.4m x 5.3m (26.2m<sup>2</sup> | 282ft<sup>2</sup>)

KITCHEN, DINING  
4.8m x 3.7m (16.7m<sup>2</sup> | 180ft<sup>2</sup>)

GARDEN  
5.2m x 3.6m (17.2m<sup>2</sup> | 185ft<sup>2</sup>)

BEDROOM 1  
5.7m x 2.9m (11.6m<sup>2</sup> | 125ft<sup>2</sup>)

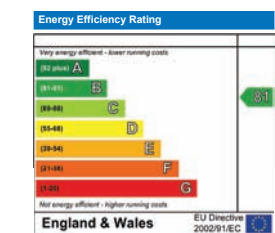
BEDROOM 2  
3.8m x 3.7m (11.6m<sup>2</sup> | 125ft<sup>2</sup>)

## FIRST FLOOR

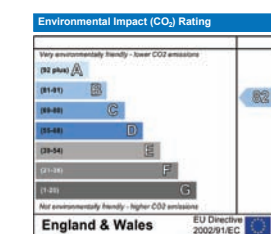
BEDROOM 3 (WITH ENSUITE)  
5.5m x 3.8m (23.0m<sup>2</sup> | 248ft<sup>2</sup>)

BEDROOM 4 (WITH ENSUITE)  
4.8m x 3.1m (15.0m<sup>2</sup> | 161ft<sup>2</sup>)

## Predicted Energy Performance



The energy efficiency rating is a measure of the overall efficiency of a home. The higher the rating the more energy efficient the home is and the lower the fuel bills are likely to be.

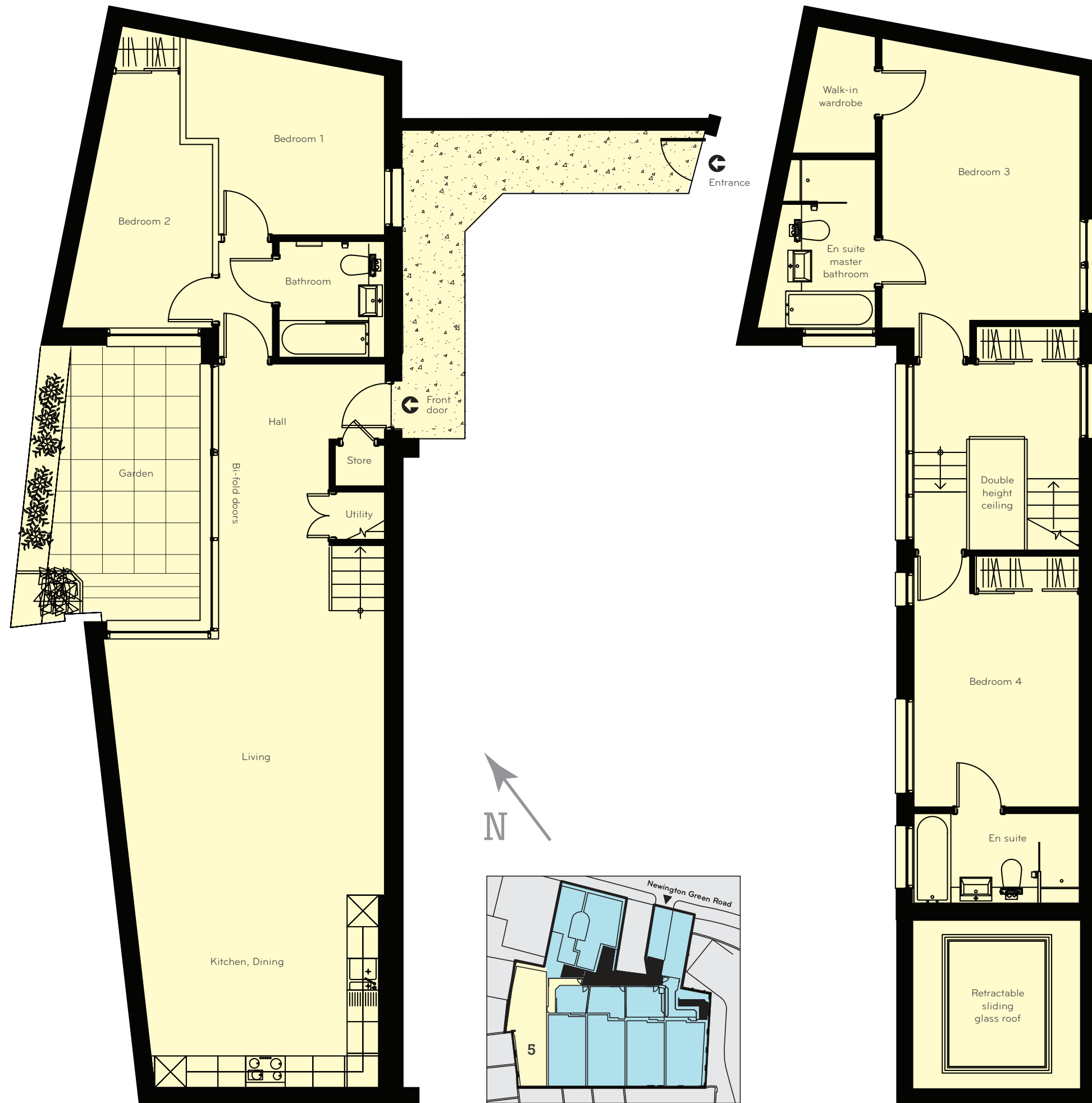


The environmental impact rating is a measure of a home's impact on the environment in terms of carbon dioxide (CO<sub>2</sub>) emissions. The higher the rating, the less impact it has on the environment.

All measurements are gross internal areas.  
Gardens are not included in the calculation.  
Room sizes may be subject to minor alterations.

Head Office: IDM Properties LLP  
Office B, West Gainsborough  
1 Poole Street, London N1 5EA

T 020 7739 1650 F 020 7739 0731  
E mail@idmproperties.com  
W idmproperties.com



GROUND FLOOR

FIRST FLOOR

