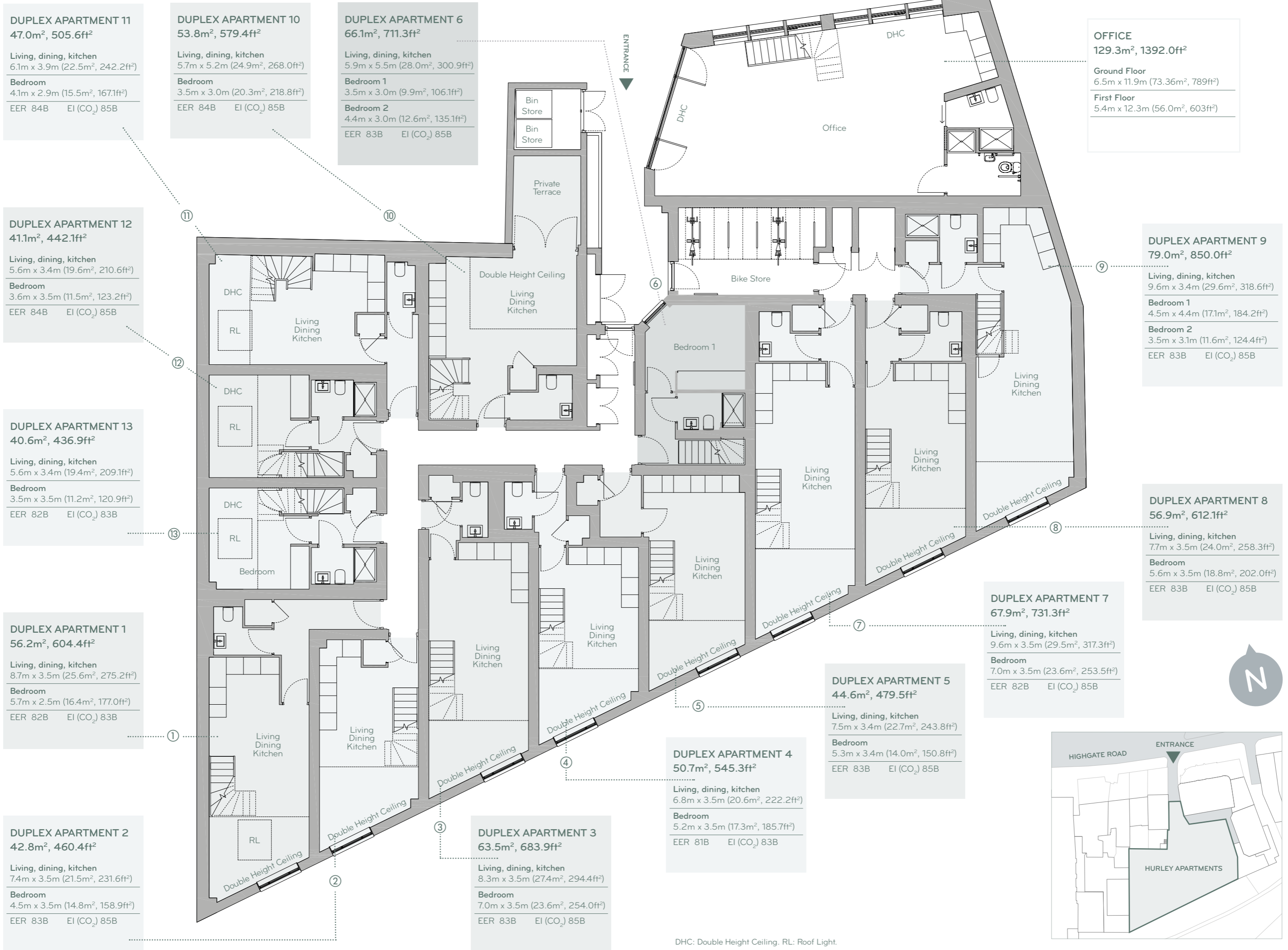


Hurley Apartments | Ground Floor



DUPLEX APARTMENT 11
47.0m², 505.6ft²

Living, dining, kitchen
6.1m x 3.9m (22.5m², 242.2ft²)

Bedroom
4.1m x 2.9m (15.5m², 167.1ft²)

EER 84B EI (CO₂) 85B

DUPLEX APARTMENT 10
53.8m², 579.4ft²

Living, dining, kitchen
5.7m x 5.2m (24.9m², 268.0ft²)

Bedroom
3.5m x 3.0m (20.3m², 218.8ft²)

EER 84B EI (CO₂) 85B

DUPLEX APARTMENT 6
66.1m², 711.3ft²

Living, dining, kitchen
5.9m x 5.5m (28.0m², 300.9ft²)

Bedroom 1
3.5m x 3.0m (9.9m², 106.1ft²)

Bedroom 2
4.4m x 3.0m (12.6m², 135.1ft²)

EER 83B EI (CO₂) 85B

OFFICE
129.3m², 1392.0ft²

Ground Floor
6.5m x 11.9m (73.36m², 789ft²)

First Floor
5.4m x 12.3m (56.0m², 603ft²)

DUPLEX APARTMENT 12
41.1m², 442.1ft²

Living, dining, kitchen
5.6m x 3.4m (19.6m², 210.6ft²)

Bedroom
3.6m x 3.5m (11.5m², 123.2ft²)

EER 84B EI (CO₂) 85B

DUPLEX APARTMENT 9
79.0m², 850.0ft²

Living, dining, kitchen
9.6m x 3.4m (29.6m², 318.6ft²)

Bedroom 1
4.5m x 4.4m (17.1m², 184.2ft²)

Bedroom 2
3.5m x 3.1m (11.6m², 124.4ft²)

EER 83B EI (CO₂) 85B

DUPLEX APARTMENT 13
40.6m², 436.9ft²

Living, dining, kitchen
5.6m x 3.4m (19.4m², 209.1ft²)

Bedroom
3.5m x 3.5m (11.2m², 120.9ft²)

EER 82B EI (CO₂) 83B

DUPLEX APARTMENT 8
56.9m², 612.1ft²

Living, dining, kitchen
7.7m x 3.5m (24.0m², 258.3ft²)

Bedroom
5.6m x 3.5m (18.8m², 202.0ft²)

EER 83B EI (CO₂) 85B

DUPLEX APARTMENT 1
56.2m², 604.4ft²

Living, dining, kitchen
8.7m x 3.5m (25.6m², 275.2ft²)

Bedroom
5.7m x 2.5m (16.4m², 177.0ft²)

EER 82B EI (CO₂) 83B

DUPLEX APARTMENT 7
67.9m², 731.3ft²

Living, dining, kitchen
9.6m x 3.5m (29.5m², 317.3ft²)

Bedroom
7.0m x 3.5m (23.6m², 253.5ft²)

EER 82B EI (CO₂) 85B

DUPLEX APARTMENT 2
42.8m², 460.4ft²

Living, dining, kitchen
7.4m x 3.5m (21.5m², 231.6ft²)

Bedroom
4.5m x 3.5m (14.8m², 158.9ft²)

EER 83B EI (CO₂) 85B

DUPLEX APARTMENT 3
63.5m², 683.9ft²

Living, dining, kitchen
8.3m x 3.5m (27.4m², 294.4ft²)

Bedroom
7.0m x 3.5m (23.6m², 254.0ft²)

EER 83B EI (CO₂) 85B

DUPLEX APARTMENT 4
50.7m², 545.3ft²

Living, dining, kitchen
6.8m x 3.5m (20.6m², 222.2ft²)

Bedroom
5.2m x 3.5m (17.3m², 185.7ft²)

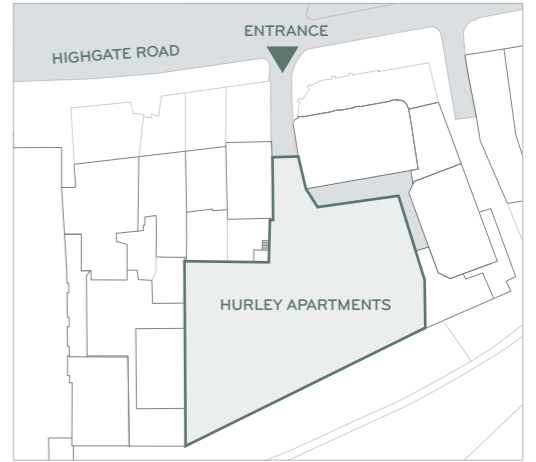
EER 81B EI (CO₂) 83B

DUPLEX APARTMENT 5
44.6m², 479.5ft²

Living, dining, kitchen
7.5m x 3.4m (22.7m², 243.8ft²)

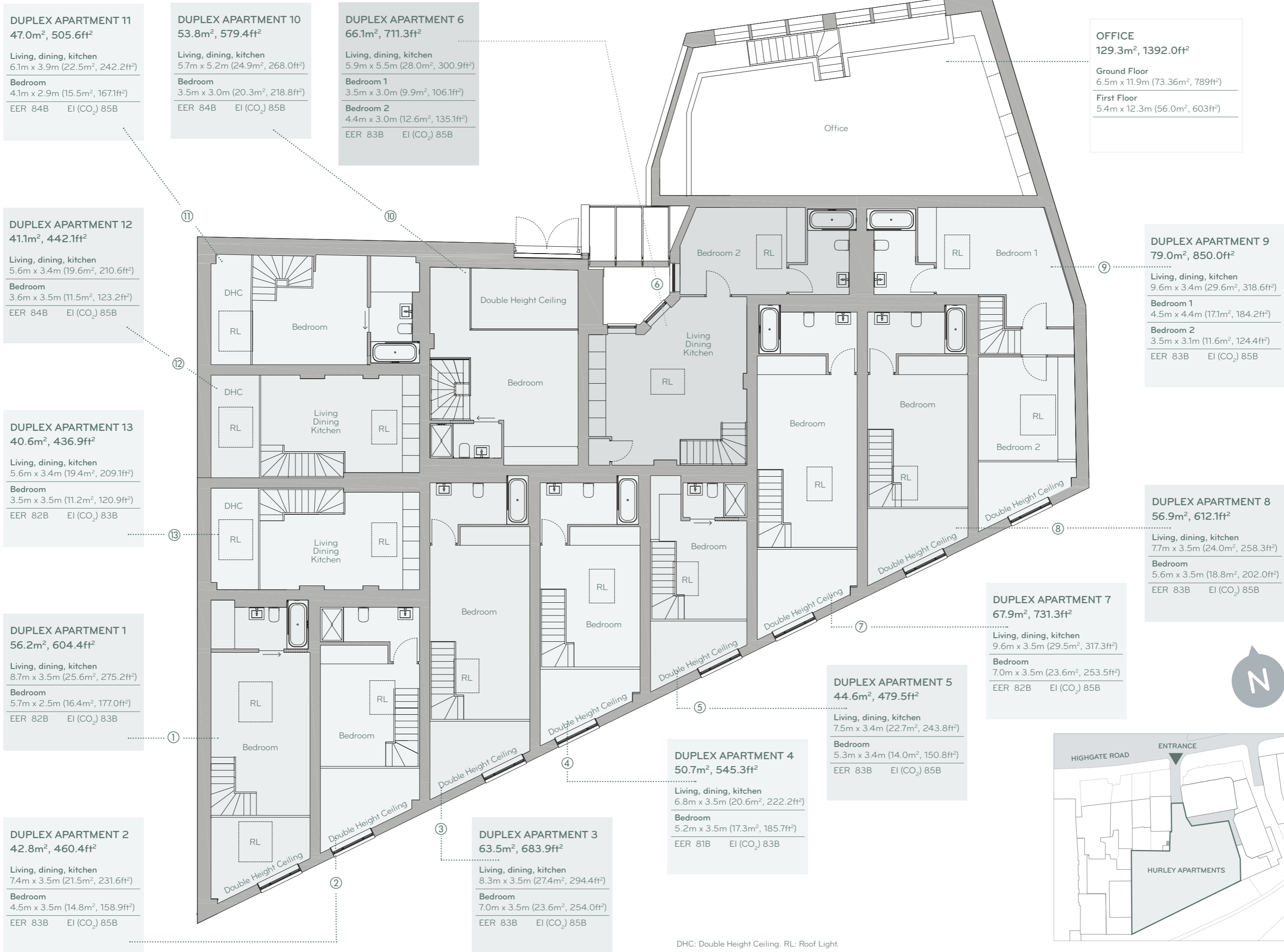
Bedroom
5.3m x 3.4m (14.0m², 150.8ft²)

EER 83B EI (CO₂) 85B



DHC: Double Height Ceiling. RL: Roof Light.
 Predicted Energy Assessment - EER: Energy Efficiency Rating. EI: Environmental Impact.
 All measurements are gross internal areas. Room sizes may be subject to minor alterations. Please refer to hurleyapartments-nw5.com for the most up-to-date floor plans.

Hurley Apartments | First Floor



DUPLEX APARTMENT 11
47.0m², 505.6ft²

Living, dining, kitchen
6.1m x 3.9m (22.5m², 242.2ft²)

Bedroom
4.1m x 2.9m (15.5m², 167.1ft²)

EER 84B EI (CO₂) 85B

DUPLEX APARTMENT 10
53.8m², 579.4ft²

Living, dining, kitchen
5.7m x 5.2m (24.9m², 268.0ft²)

Bedroom
3.5m x 3.0m (20.3m², 218.8ft²)

EER 84B EI (CO₂) 85B

DUPLEX APARTMENT 6
66.1m², 711.3ft²

Living, dining, kitchen
5.9m x 5.5m (28.0m², 300.9ft²)

Bedroom 1
3.5m x 3.0m (9.9m², 106.1ft²)

Bedroom 2
4.4m x 3.0m (12.6m², 135.1ft²)

EER 83B EI (CO₂) 85B

OFFICE
129.3m², 1392.0ft²

Ground Floor
6.5m x 11.9m (73.36m², 789ft²)

First Floor
5.4m x 12.3m (56.0m², 603ft²)

DUPLEX APARTMENT 12
41.1m², 442.1ft²

Living, dining, kitchen
5.6m x 3.4m (19.6m², 210.6ft²)

Bedroom
3.6m x 3.5m (11.5m², 123.2ft²)

EER 84B EI (CO₂) 85B

DUPLEX APARTMENT 9
79.0m², 850.0ft²

Living, dining, kitchen
9.6m x 3.4m (29.6m², 318.6ft²)

Bedroom 1
4.5m x 4.4m (17.1m², 184.2ft²)

Bedroom 2
3.5m x 3.1m (11.6m², 124.4ft²)

EER 83B EI (CO₂) 85B

DUPLEX APARTMENT 13
40.6m², 436.9ft²

Living, dining, kitchen
5.6m x 3.4m (19.4m², 209.1ft²)

Bedroom
3.5m x 3.5m (11.2m², 120.9ft²)

EER 82B EI (CO₂) 83B

DUPLEX APARTMENT 8
56.9m², 612.1ft²

Living, dining, kitchen
7.7m x 3.5m (24.0m², 258.3ft²)

Bedroom
5.6m x 3.5m (18.8m², 202.0ft²)

EER 83B EI (CO₂) 85B

DUPLEX APARTMENT 1
56.2m², 604.4ft²

Living, dining, kitchen
8.7m x 3.5m (25.6m², 275.2ft²)

Bedroom
5.7m x 2.5m (16.4m², 177.0ft²)

EER 82B EI (CO₂) 83B

DUPLEX APARTMENT 7
67.9m², 731.3ft²

Living, dining, kitchen
9.6m x 3.5m (29.5m², 317.3ft²)

Bedroom
7.0m x 3.5m (23.6m², 253.5ft²)

EER 82B EI (CO₂) 85B

DUPLEX APARTMENT 5
44.6m², 479.5ft²

Living, dining, kitchen
7.5m x 3.4m (22.7m², 243.8ft²)

Bedroom
5.3m x 3.4m (14.0m², 150.8ft²)

EER 83B EI (CO₂) 85B

DUPLEX APARTMENT 4
50.7m², 545.3ft²

Living, dining, kitchen
6.8m x 3.5m (20.6m², 222.2ft²)

Bedroom
5.2m x 3.5m (17.3m², 185.7ft²)

EER 81B EI (CO₂) 83B

DUPLEX APARTMENT 2
42.8m², 460.4ft²

Living, dining, kitchen
7.4m x 3.5m (21.5m², 231.6ft²)

Bedroom
4.5m x 3.5m (14.8m², 158.9ft²)

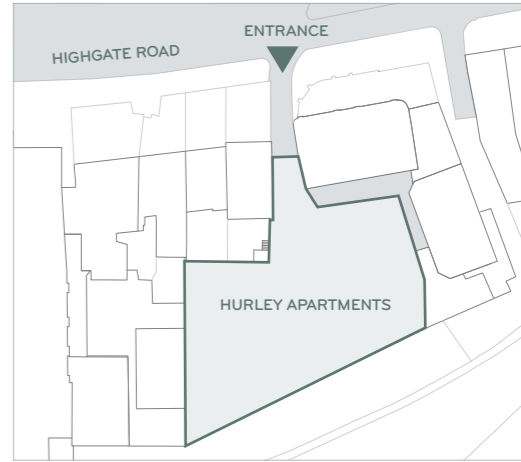
EER 83B EI (CO₂) 85B

DUPLEX APARTMENT 3
63.5m², 683.9ft²

Living, dining, kitchen
8.3m x 3.5m (27.4m², 294.4ft²)

Bedroom
7.0m x 3.5m (23.6m², 254.0ft²)

EER 83B EI (CO₂) 85B



DHC: Double Height Ceiling. RL: Roof Light.
 Predicted Energy Assessment - EER: Energy Efficiency Rating. EI: Environmental Impact.
 All measurements are gross internal areas. Room sizes may be subject to minor alterations. Please refer to hurleyapartments-nw5.com for the most up-to-date floor plans.