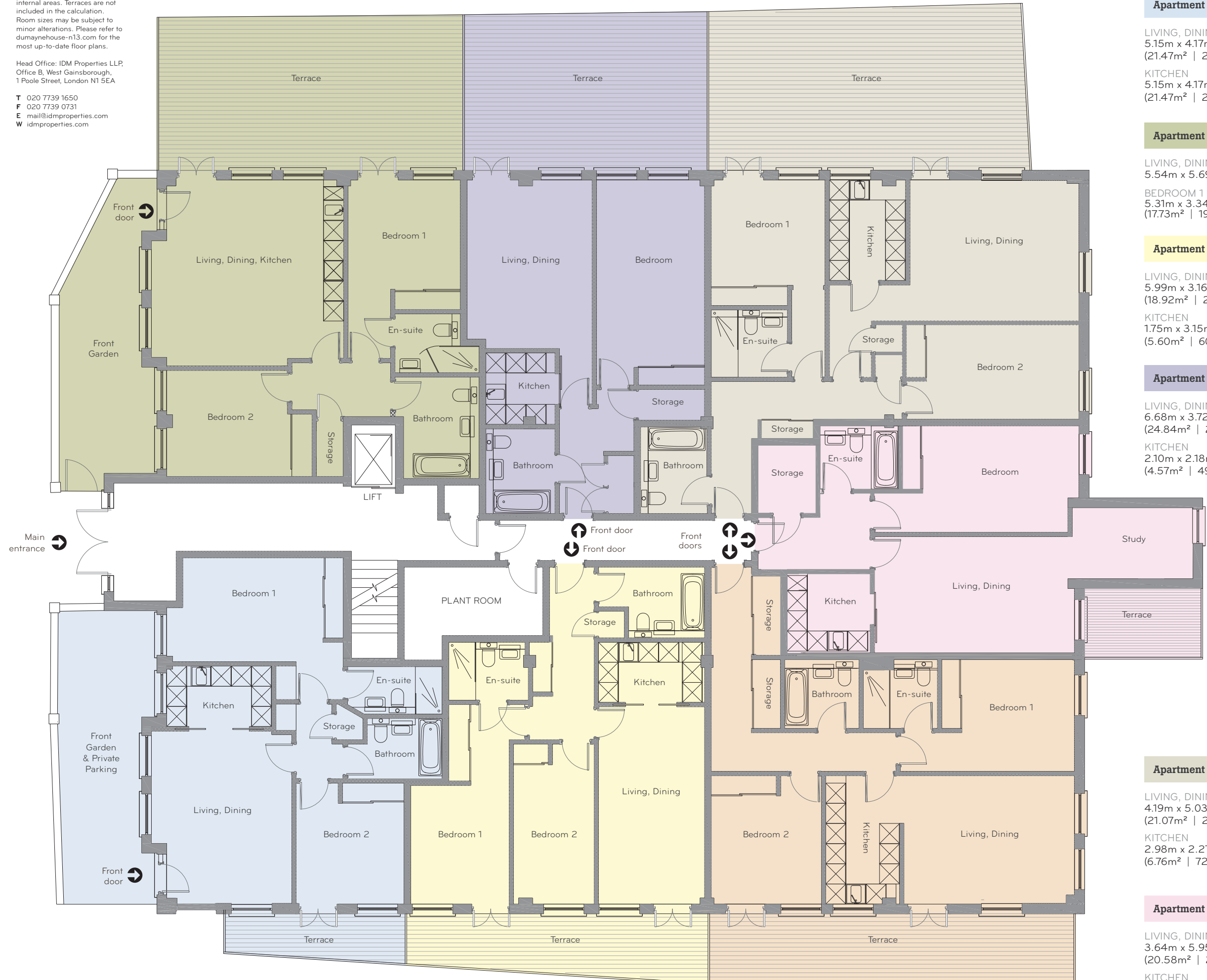


All measurements are gross internal areas. Terraces are not included in the calculation. Room sizes may be subject to minor alterations. Please refer to dumaynehouse-n13.com for the most up-to-date floor plans.

Head Office: IDM Properties LLP,
Office B, West Gainsborough,
1 Poole Street, London N1 5EA

T 020 7739 1650
F 020 7739 0731
E mail@idmproperties.com
W idmproperties.com



Apartment No.1 | 71m² | 763ft² total area

| | |
|--|---|
| LIVING, DINING 5.15m x 4.17m (21.47m ² 234ft ²) | BEDROOM 1 4.20m x 5.07m (21.29m ² 229ft ²) |
| KITCHEN 5.15m x 4.17m (21.47m ² 234ft ²) | BEDROOM 2 3.60m x 3.21m (11.55m ² 124ft ²) |

Apartment No.2 | 78m² | 839ft² total area

| | |
|--|---|
| LIVING, DINING, KITCHEN 5.54m x 5.69m (31.52m ² 339ft ²) | |
| BEDROOM 1 5.31m x 3.34m (17.73m ² 190ft ²) | BEDROOM 2 3.15m x 4.14m (13.04m ² 140ft ²) |

Apartment No.3 | 74m² | 796ft² total area

| | |
|--|---|
| LIVING, DINING 5.99m x 3.16m (18.92m ² 203ft ²) | BEDROOM 1 5.93m x 2.93m (17.37m ² 186ft ²) |
| KITCHEN 1.75m x 3.15m (5.60m ² 60ft ²) | BEDROOM 2 2.10m x 3.16m (11.42m ² 122ft ²) |

Apartment No.4 | 61m² | 656ft² total area

| | |
|--|---|
| LIVING, DINING 6.68m x 3.72m (24.84m ² 267ft ²) | BEDROOM 6.10m x 3.22m (19.64m ² 211ft ²) |
| KITCHEN 2.10m x 2.18m (4.57m ² 49ft ²) | |

Apartment No.5 83m² | 893ft² total area

| | |
|---|--|
| LIVING, DINING 3.80m x 5.07m (19.26m ² 207ft ²) | |
| KITCHEN 3.81m x 2.18m (6.75m ² 72ft ²) | |
| BEDROOM 1 3.33m x 3.95m (13.15m ² 141ft ²) | |
| BEDROOM 2 3.82m x 3.28m (12.53m ² 134ft ²) | |

Apartment No.6 | 87m² | 936ft² total area

| | |
|--|---|
| LIVING, DINING 4.19m x 5.03m (21.07m ² 226ft ²) | BEDROOM 1 3.38m x 3.14m (10.61m ² 114ft ²) |
| KITCHEN 2.98m x 2.27m (6.76m ² 72ft ²) | BEDROOM 2 2.80m x 5.13m (14.36m ² 154ft ²) |

Apartment No.7 | 68m² | 732ft² total area

| | |
|--|---|
| LIVING, DINING 3.64m x 5.95m (20.58m ² 221ft ²) | BEDROOM 3.17m x 6.07m (19.24m ² 207ft ²) |
| KITCHEN 1.99m x 2.35m (4.67m ² 50ft ²) | STUDY 2.10m x 3.60m (7.56m ² 81ft ²) |

FOX LANE

Ground floor: Apartments 1 – 7

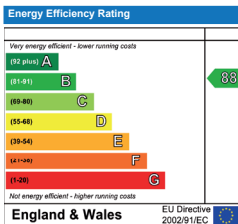


All measurements are gross internal areas. Room sizes may be subject to minor alterations. Please refer to dumayhouse-n13.com for the most up-to-date floor plans.

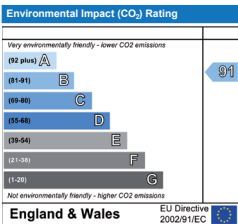
Head Office: IDM Properties LLP,
Office B, West Gainsborough,
1 Poole Street, London N1 5EA

T 020 7739 1650
F 020 7739 0731
E mail@idmproperties.com
W idmproperties.com

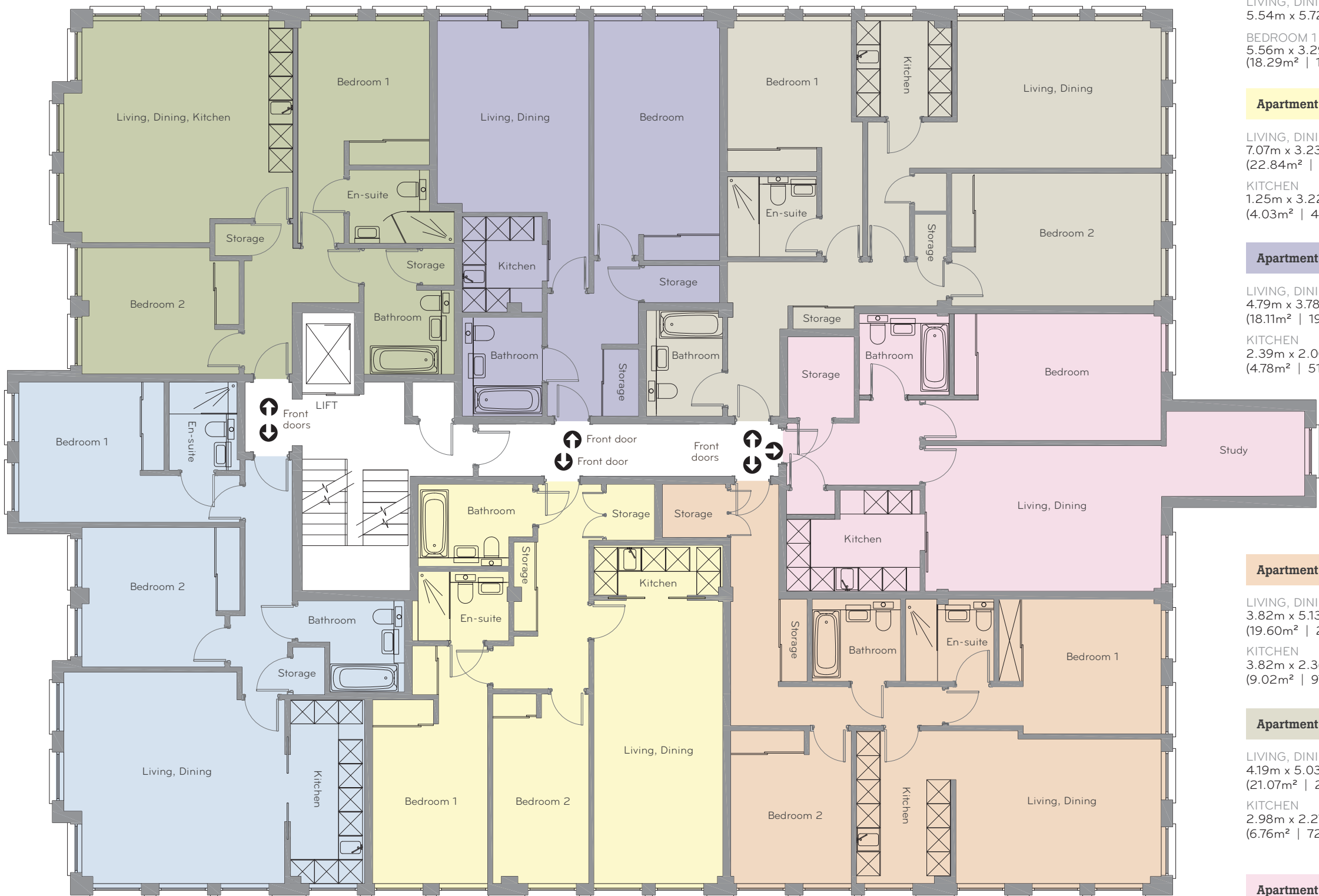
Predicted Energy Performance



The energy efficiency rating is a measure of the overall efficiency of a home. The higher the rating the more energy efficient the home is and the lower the fuel bills are likely to be.



The environmental impact rating is a measure of a home's impact on the environment in terms of carbon dioxide (CO₂) emissions. The higher the rating, the less impact it has on the environment.



Apartment No.8 | 85m² | 915ft² total area

LIVING, DINING
5.28m x 5.52m
(21.15m² | 314ft²)

BEDROOM 1
3.49m x 3.95m
(13.79m² | 148ft²)

KITCHEN
4.59m x 1.85m
(8.49m² | 91ft²)

BEDROOM 2
3.51m x 5.53m
(19.41m² | 209ft²)

Apartment No.9 | 77m² | 829ft² total area

LIVING, DINING, KITCHEN
5.54m x 5.72m (31.69m² | 341ft²)

BEDROOM 1
5.56m x 3.29m
(18.29m² | 197ft²)

BEDROOM 2
3.51m x 5.53m
(19.41m² | 209ft²)

Apartment No.10 | 79m² | 850ft² total area

LIVING, DINING
7.07m x 3.23m
(22.84m² | 246ft²)

BEDROOM 1
5.93m x 2.87m
(17.02m² | 183ft²)

KITCHEN
1.25m x 3.22m
(4.03m² | 43ft²)

BEDROOM 2
4.74m x 2.40m
(11.38m² | 122ft²)

Apartment No.11 | 61m² | 656ft² total area

LIVING, DINING
4.79m x 3.78m
(18.11m² | 195ft²)

BEDROOM
4.79m x 3.78m
(18.11m² | 195ft²)

KITCHEN
2.39m x 2.00m
(4.78m² | 51ft²)

Apartment No.12 | 82m² | 882ft² total area

LIVING, DINING
3.82m x 5.13m
(19.60m² | 211ft²)

BEDROOM 1
3.37m x 5.34m
(17.10m² | 184ft²)

KITCHEN
3.82m x 2.36m
(9.02m² | 97ft²)

BEDROOM 2
3.82m x 3.01m
(11.50m² | 124ft²)

Apartment No.13 | 87m² | 936ft² total area

LIVING, DINING
4.19m x 5.03m
(21.07m² | 226ft²)

BEDROOM 1
3.38m x 3.14m
(10.61m² | 114ft²)

KITCHEN
2.98m x 2.27m
(6.76m² | 72ft²)

BEDROOM 2
2.80m x 5.13m
(14.36m² | 154ft²)

Apartment No.14 | 71m² | 734ft² total area

LIVING, DINING
3.64m x 5.90m
(21.48m² | 231ft²)

BEDROOM
3.17m x 5.90m
(18.70m² | 201ft²)

KITCHEN
2.53m x 1.10m
(2.78m² | 30ft²)

STUDY
2.12m x 3.46m
(7.34m² | 45ft²)

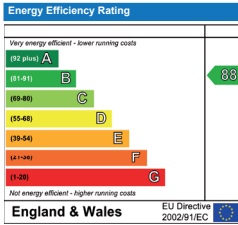


All measurements are gross internal areas. Room sizes may be subject to minor alterations. Please refer to dumaynehouse-n13.com for the most up-to-date floor plans.

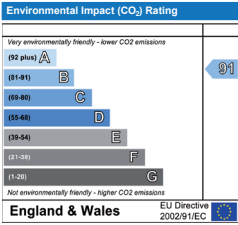
Head Office: IDM Properties LLP,
Office B, West Gainsborough,
1 Poole Street, London N1 5EA

T 020 7739 1650
F 020 7739 0731
E mail@idmproperties.com
W idmproperties.com

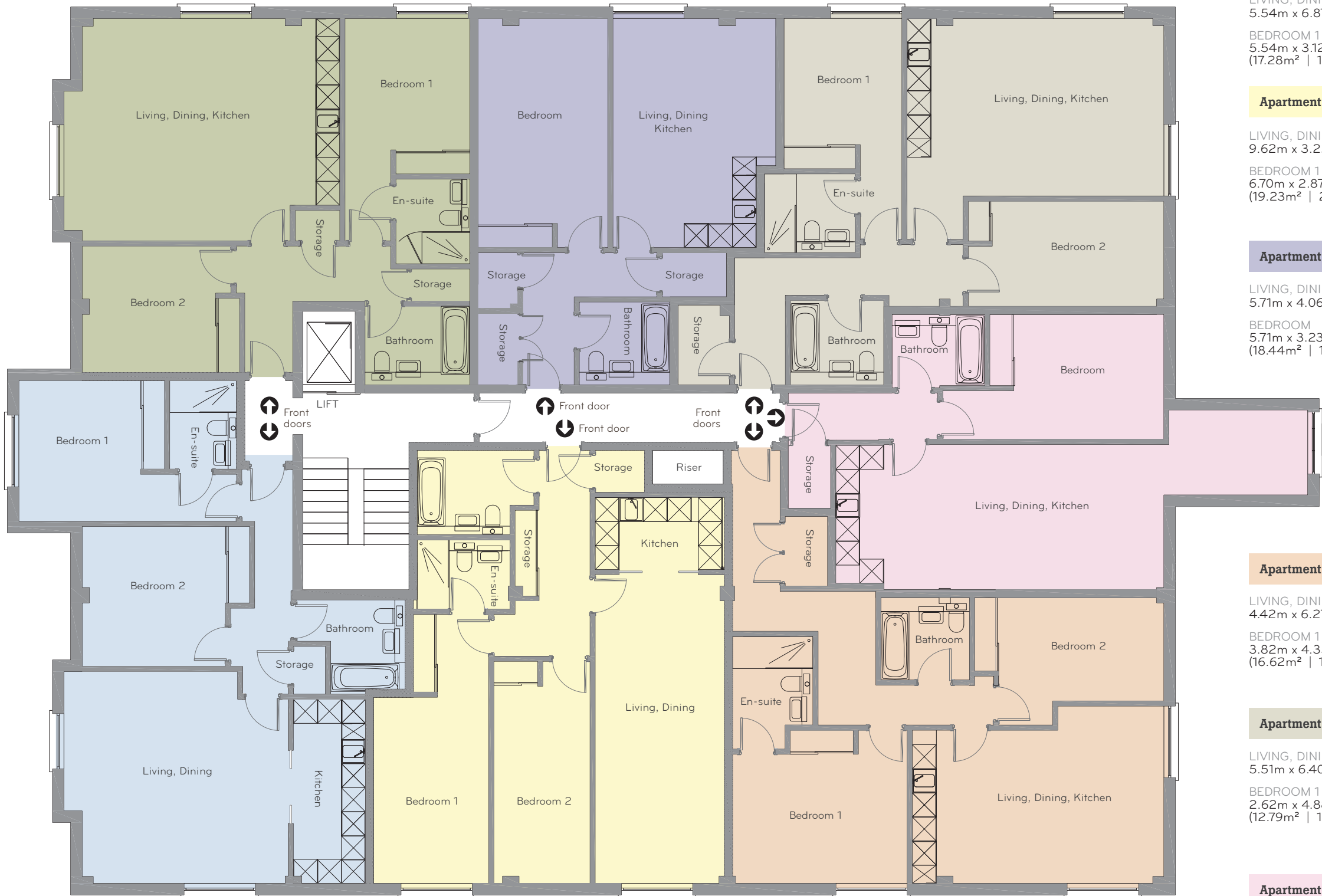
Predicted Energy Performance



The energy efficiency rating is a measure of the overall efficiency of a home. The higher the rating the more energy efficient the home is and the lower the fuel bills are likely to be.



The environmental impact rating is a measure of a home's impact on the environment in terms of carbon dioxide (CO₂) emissions. The higher the rating, the less impact it has on the environment.



Apartment No.15 | 85m² | 915ft² total area

LIVING, DINING
5.28m x 5.52m
(21.15m² | 314ft²)

BEDROOM 1
3.49m x 3.95m
(13.79m² | 148ft²)

KITCHEN
4.59m x 1.85m
(8.49m² | 91ft²)

BEDROOM 2
3.51m x 5.53m
(19.41m² | 209ft²)

Apartment No.16 | 84m² | 904ft² total area

LIVING, DINING, KITCHEN
5.54m x 6.87m (38.06m² | 410ft²)

BEDROOM 1
5.54m x 3.12m
(17.28m² | 186ft²)

BEDROOM 2
3.15m x 3.92m
(12.35m² | 133ft²)

Apartment No.17 | 86m² | 925ft² total area

LIVING, DINING, KITCHEN
9.62m x 3.22m (30.98m² | 333ft²)

BEDROOM 1
6.70m x 2.87m
(19.23m² | 207ft²)

BEDROOM 2
5.53m x 2.40m
(13.27m² | 143ft²)

Apartment No.18 | 59m² | 635ft² total area

LIVING, DINING, KITCHEN
5.71m x 4.06m (23.18m² | 249ft²)

BEDROOM
5.71m x 3.23m
(18.44m² | 198ft²)

Apartment No.19 | 84m² | 904ft² total area

LIVING, DINING, KITCHEN
4.42m x 6.27m (27.71m² | 298ft²)

BEDROOM 1
3.82m x 4.35m
(16.62m² | 179ft²)

BEDROOM 2
3.18m x 4.72m
(15.01m² | 162ft²)

Apartment No.20 | 80m² | 861ft² total area

LIVING, DINING, KITCHEN
5.51m x 6.40m (35.26m² | 380ft²)

BEDROOM 1
2.62m x 4.88m
(12.79m² | 138ft²)

BEDROOM 2
5.51m x 2.94m
(16.20m² | 174ft²)

Apartment No.21 | 64m² | 689ft² total area

LIVING, DINING, KITCHEN
4.48m x 10.56m (47.31m² | 509ft²)

BEDROOM
3.11m x 5.51m
(17.14m² | 184ft²)

