

House A, Batley Place | 96.3m<sup>2</sup> | 1036ft<sup>2</sup> total area

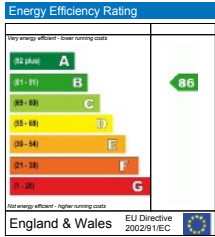
**GROUND FLOOR (G)**  
LIVING / DINING / KITCHEN  
6.2m x 5.2m (32.2m<sup>2</sup> | 347ft<sup>2</sup>)

**FIRST FLOOR (1)**  
BEDROOM 2  
3.5m x 2.8m (9.8m<sup>2</sup> | 105ft<sup>2</sup>)

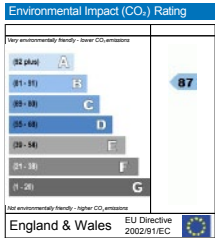
BEDROOM 3  
3.2m x 2.9m (9.3m<sup>2</sup> | 100ft<sup>2</sup>)

**SECOND FLOOR (2)**  
BEDROOM 1  
6.1m x 3.0m (18.3m<sup>2</sup> | 197ft<sup>2</sup>)

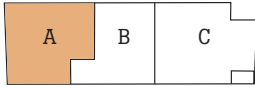
**Predicted Energy Performance**



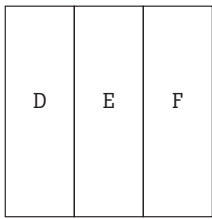
The energy efficiency rating is a measure of the overall efficiency of a home. The higher the rating the more energy efficient the home is and the lower the fuel bills are likely to be.



The environmental impact rating is a measure of a home's impact on the environment in terms of carbon dioxide (CO<sub>2</sub>) emissions. The higher the rating, the less impact it has on the environment.



Batley Place

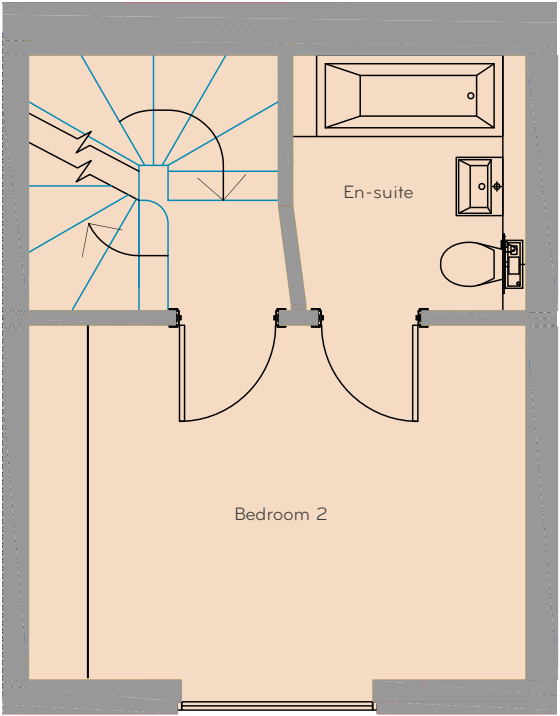


N

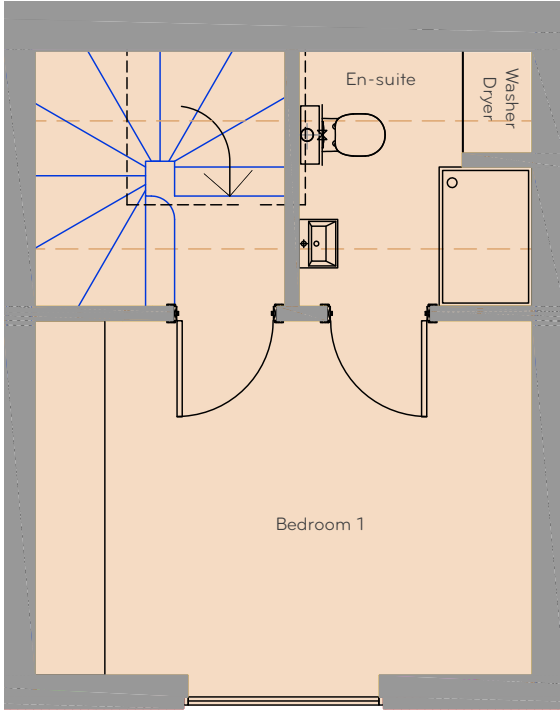


All measurements are gross internal areas. Terraces are not included in the calculation. Floorplans are correct at time of going to print. They may be subject to minor alterations. Please refer to batleyplace-n16.com for the most up to date drawings.

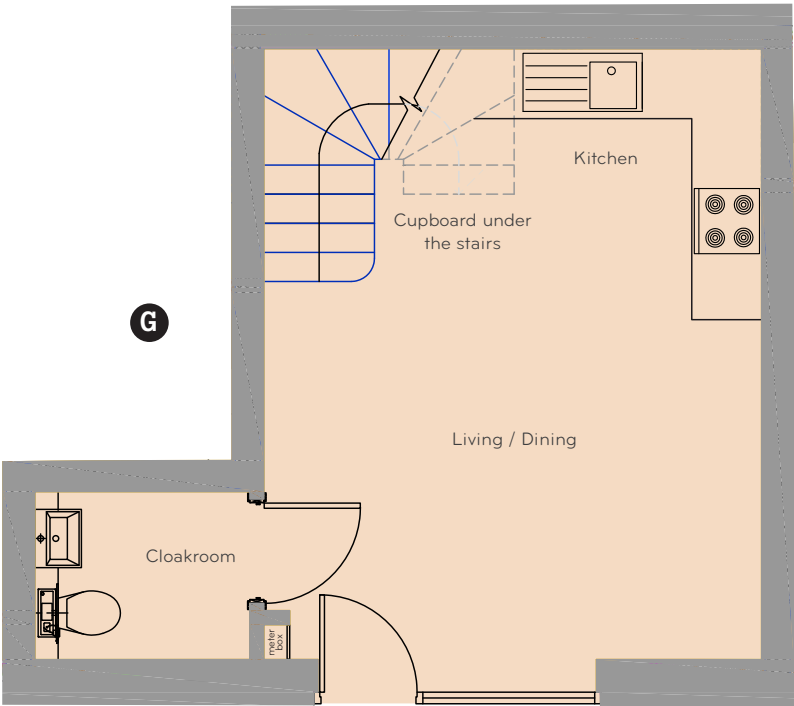
1



2



G



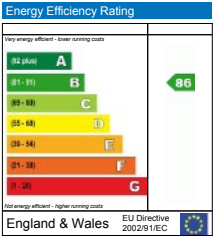
House B, Batley Place | 72m<sup>2</sup> | 776ft<sup>2</sup> total area

Predicted Energy Performance

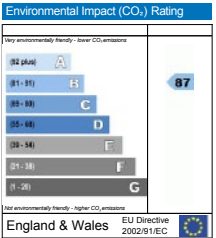
**GROUND FLOOR (G)**  
LIVING / DINING / KITCHEN  
5.2m x 4.2m (23.4m<sup>2</sup> | 252ft<sup>2</sup>)

**FIRST FLOOR (1)**  
BEDROOM 1  
4.3m x 3.0m (12.9m<sup>2</sup> | 139ft<sup>2</sup>)

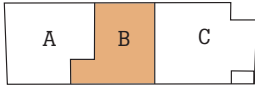
**SECOND FLOOR (2)**  
BEDROOM 2  
4.3m x 3.0m (12.9m<sup>2</sup> | 139ft<sup>2</sup>)



The energy efficiency rating is a measure of the overall efficiency of a home. The higher the rating the more energy efficient the home is and the lower the fuel bills are likely to be.



The environmental impact rating is a measure of a home's impact on the environment in terms of carbon dioxide (CO<sub>2</sub>) emissions. The higher the rating, the less impact it has on the environment.



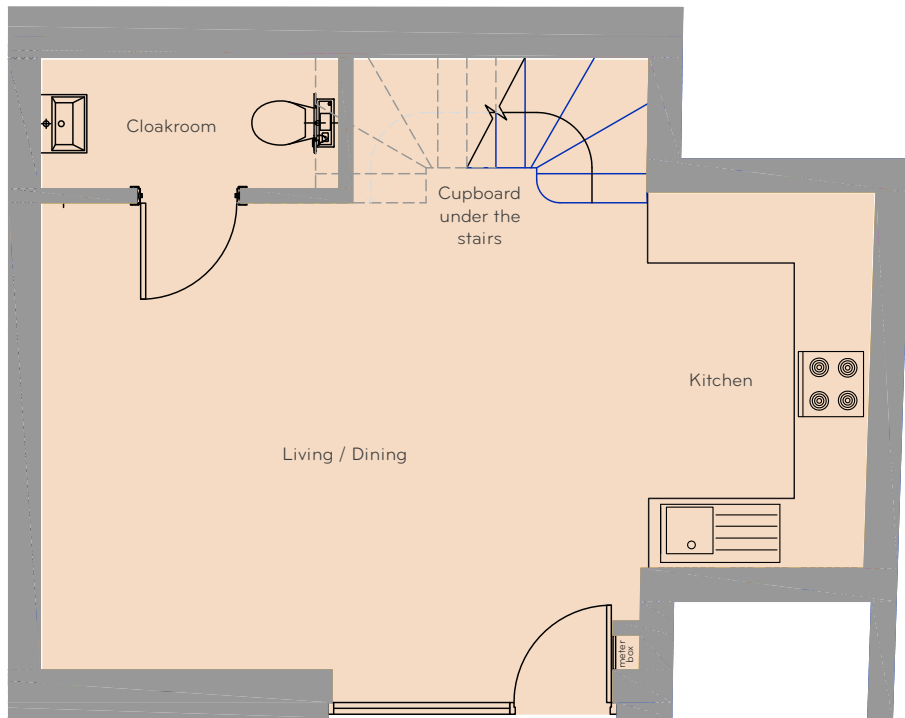
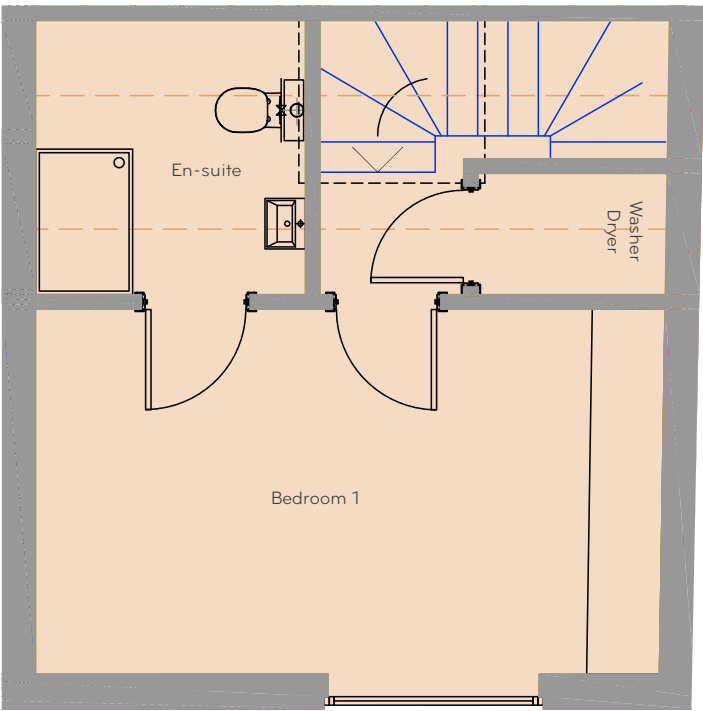
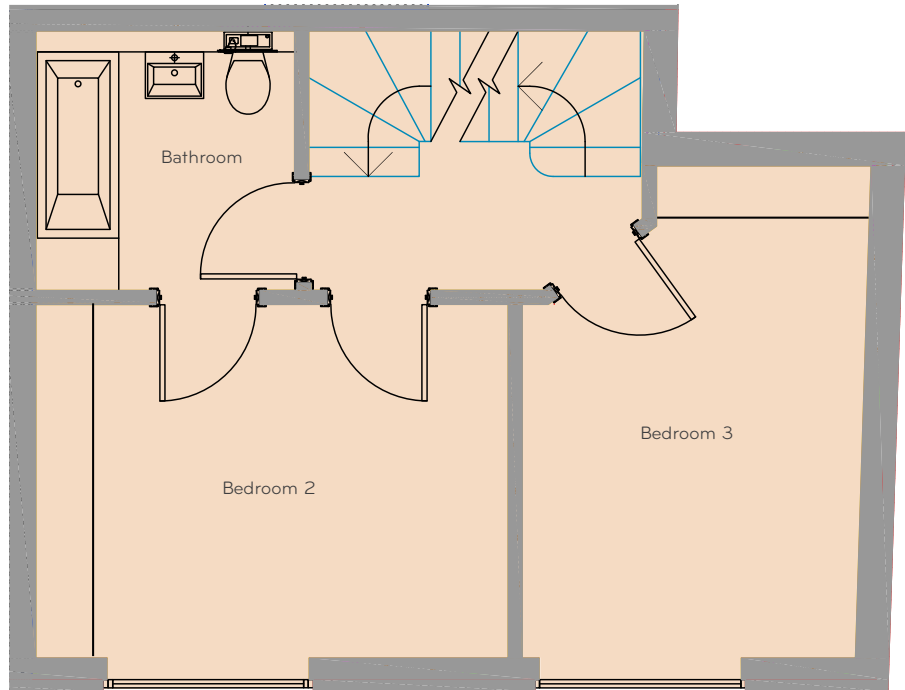
Batley Place

N



All measurements are gross internal areas. Terraces are not included in the calculation. Floorplans are correct at time of going to print. They may be subject to minor alterations. Please refer to [batleyplace-n16.com](http://batleyplace-n16.com) for the most up to date drawings.



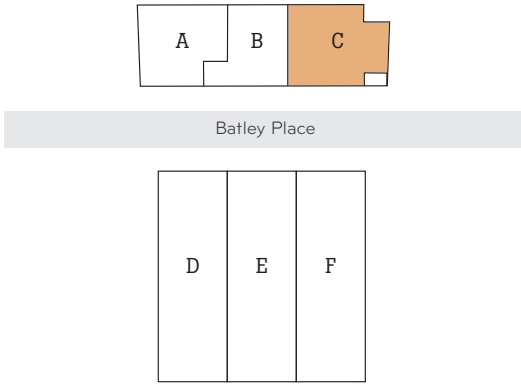


All measurements are gross internal areas. Terraces are not included in the calculation. Floorplans are correct at time of going to print. They may be subject to minor alterations. Please refer to batleyplace-n16.com for the most up to date drawings.

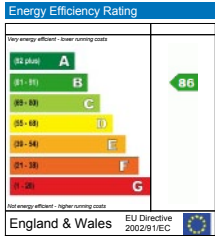
Batley Place

House C, Batley Place | 99m<sup>2</sup> | 1066ft<sup>2</sup> total area

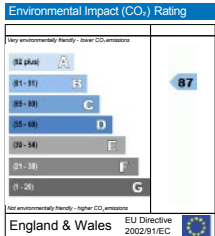
- GROUND FLOOR (G)**  
KITCHEN / LIVING  
7.1m x 4m (28.4m<sup>2</sup> | 306ft<sup>2</sup>)
- FIRST FLOOR (1)**  
BEDROOM 2  
4.0m x 3.0m (12.0m<sup>2</sup> | 129ft<sup>2</sup>)  
BEDROOM 3  
4.1m x 3.0m (12.3m<sup>2</sup> | 132ft<sup>2</sup>)
- SECOND FLOOR (2)**  
BEDROOM 1  
5.2m x 2.9m (15.0m<sup>2</sup> | 162ft<sup>2</sup>)



Predicted Energy Performance

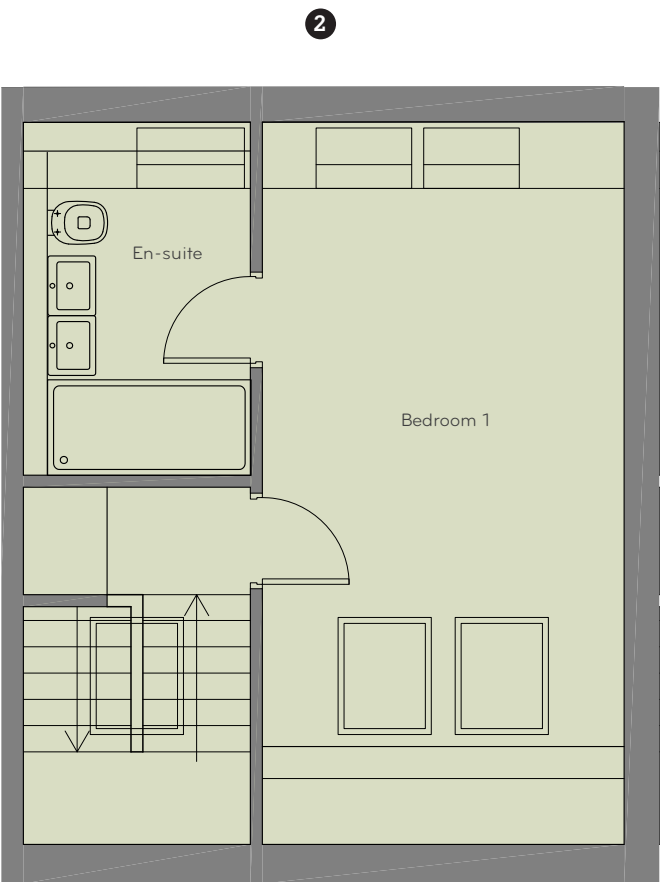
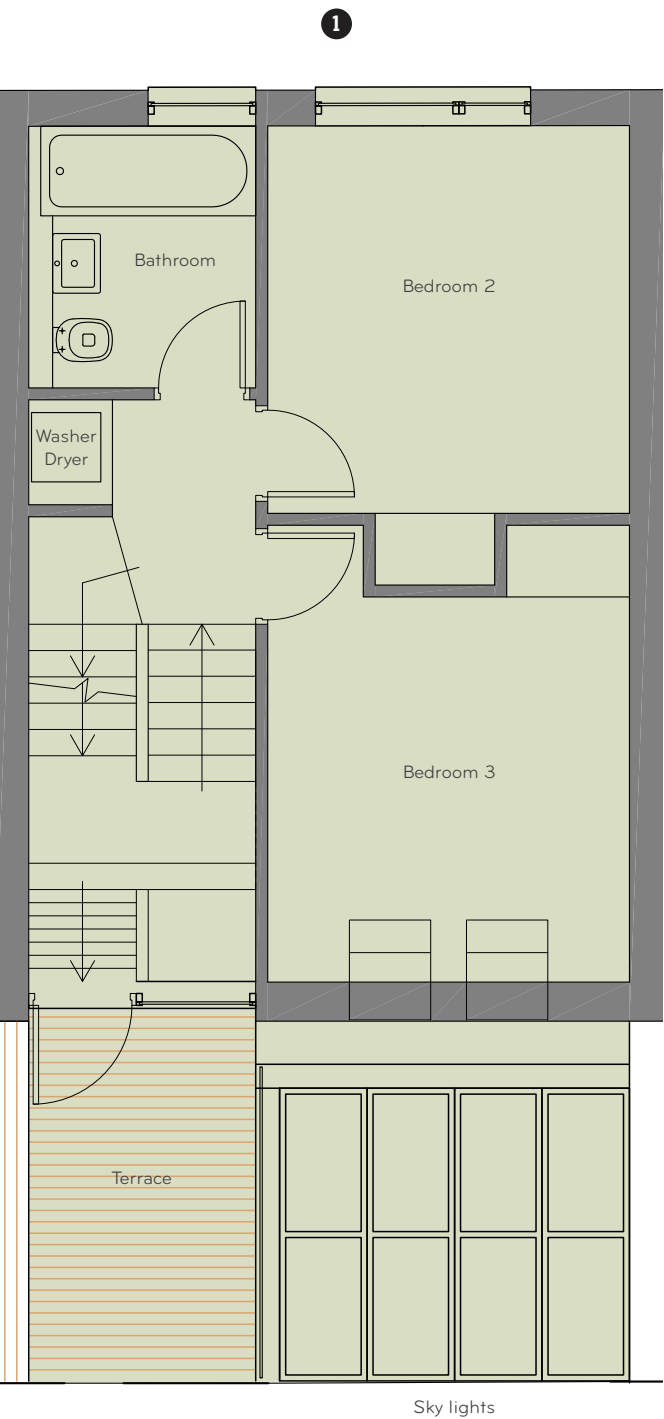
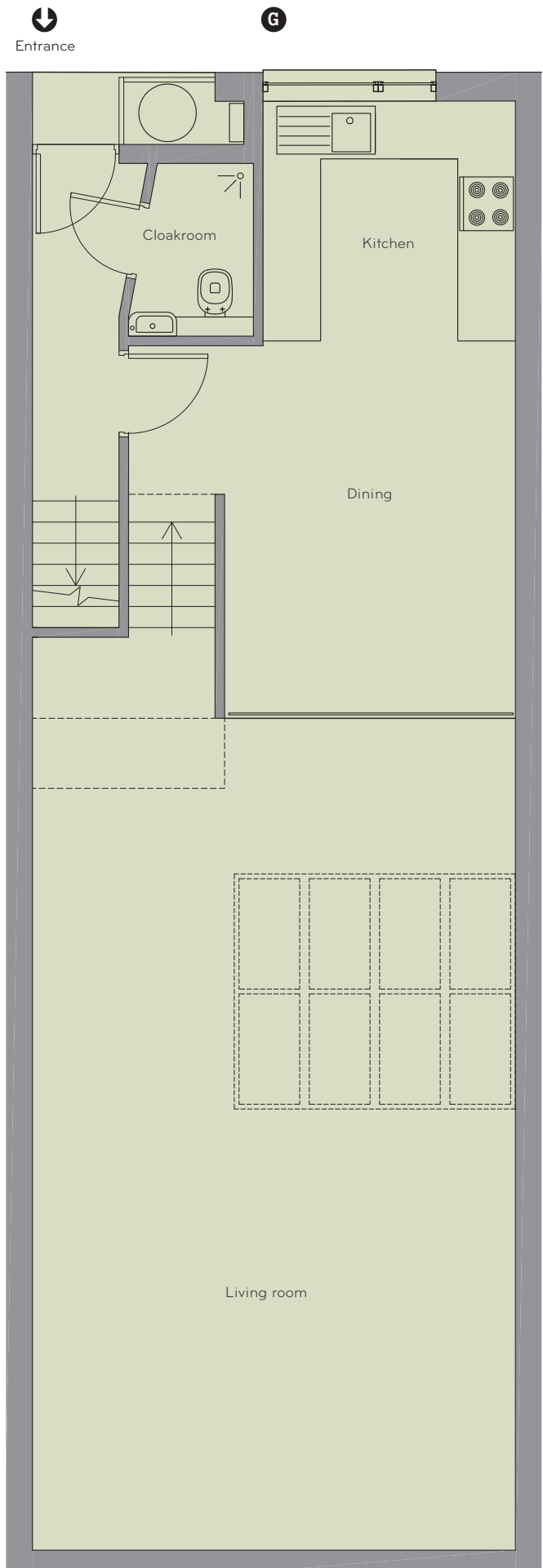


The energy efficiency rating is a measure of the overall efficiency of a home. The higher the rating the more energy efficient the home is and the lower the fuel bills are likely to be.



The environmental impact rating is a measure of a home's impact on the environment in terms of carbon dioxide (CO<sub>2</sub>) emissions. The higher the rating, the less impact it has on the environment.

Batley Place



House D, Batley Place | 139m<sup>2</sup> | 1496ft<sup>2</sup> total area

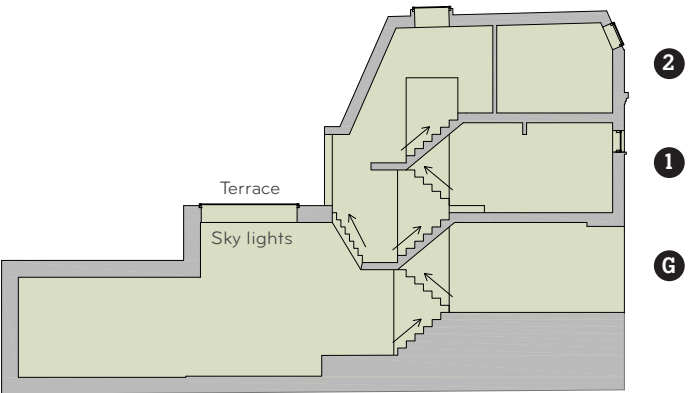
**GROUND FLOOR (G)**  
**LIVING**  
8.6m x 5.1m (43.9m<sup>2</sup> | 472ft<sup>2</sup>)

**KITCHEN / DINING**  
6.4m x 3.0m (19.2m<sup>2</sup> | 207ft<sup>2</sup>)

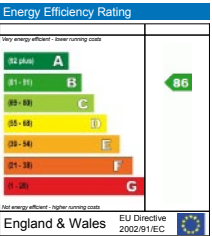
**FIRST FLOOR (1)**  
**BEDROOM 2**  
3.2m x 3.0m (9.6m<sup>2</sup> | 103ft<sup>2</sup>)

**BEDROOM 3**  
3.2m x 3.0m (9.6m<sup>2</sup> | 103ft<sup>2</sup>)

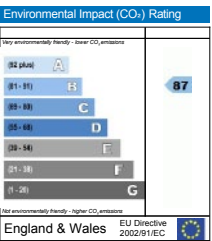
**SECOND FLOOR (2)**  
**BEDROOM 1**  
6.0m x 3.0m (18m<sup>2</sup> | 194ft<sup>2</sup>)



Predicted Energy Performance



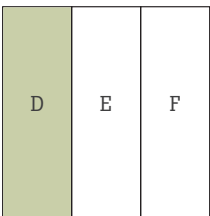
The energy efficiency rating is a measure of the overall efficiency of a home. The higher the rating the more energy efficient the home is and the lower the fuel bills are likely to be.



The environmental impact rating is a measure of a home's impact on the environment in terms of carbon dioxide (CO<sub>2</sub>) emissions. The higher the rating, the less impact it has on the environment.

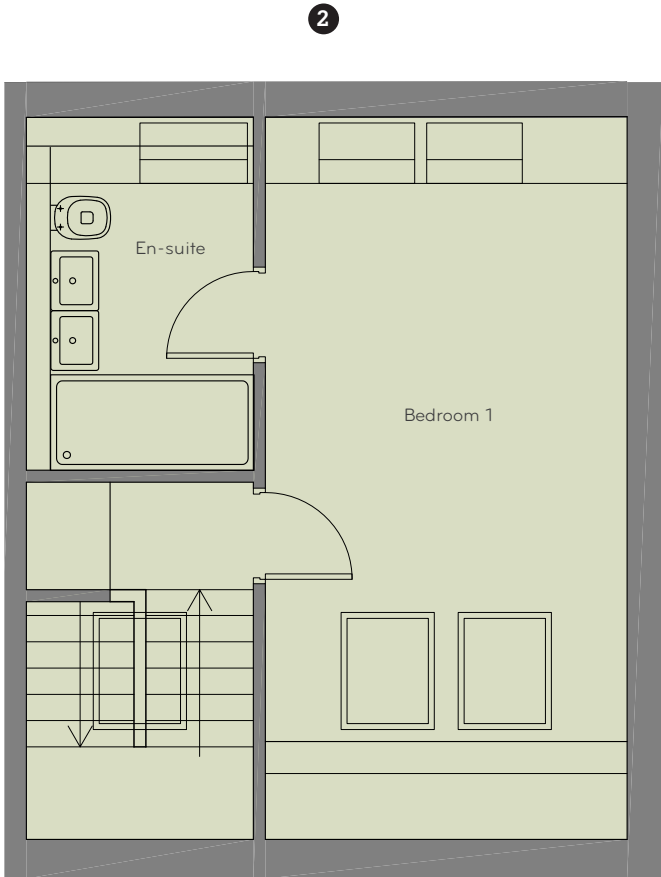
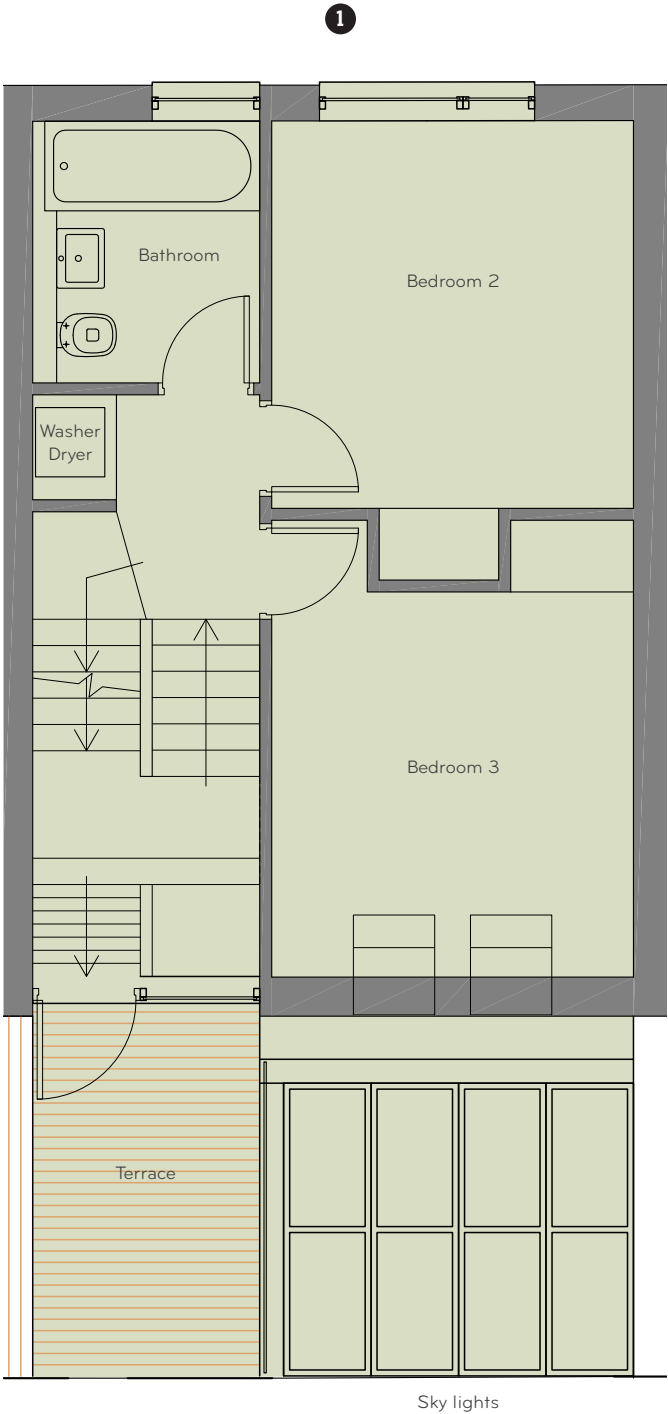
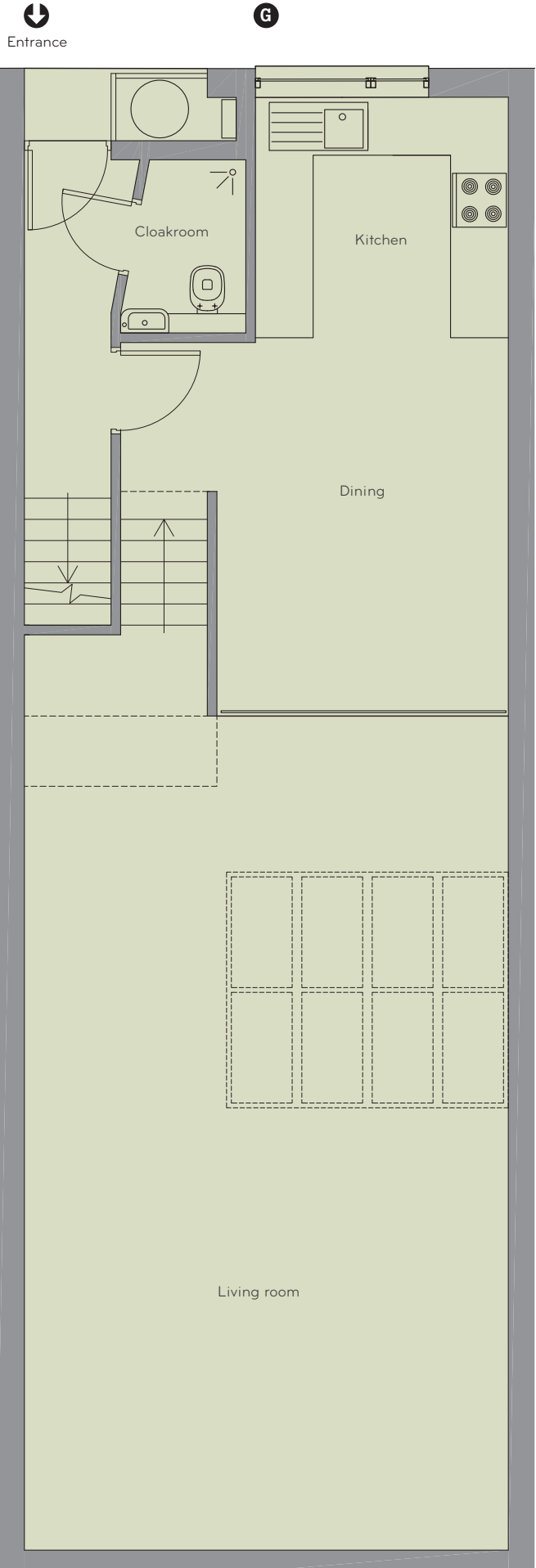


Batley Place



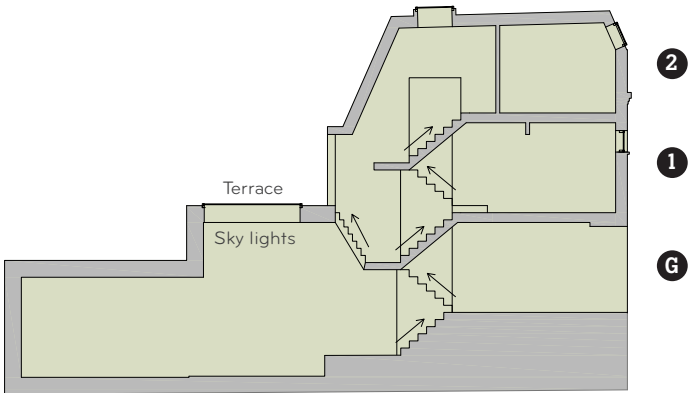
All measurements are gross internal areas. Terraces are not included in the calculation. Floorplans are correct at time of going to print. They may be subject to minor alterations. Please refer to batleyplace-n16.com for the most up to date drawings.



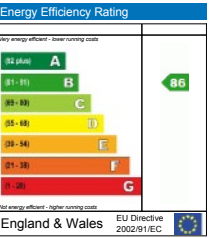


House E, Batley Place | 139m<sup>2</sup> | 1496ft<sup>2</sup> total area

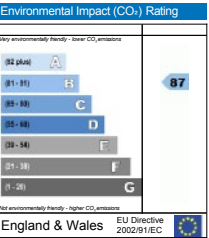
- GROUND FLOOR (G)**  
LIVING  
8.6m x 5.1m (43.9m<sup>2</sup> | 472ft<sup>2</sup>)  
KITCHEN / DINING  
6.4m x 3.0m (19.2m<sup>2</sup> | 207ft<sup>2</sup>)
- FIRST FLOOR (1)**  
BEDROOM 2  
3.2m x 3.0m (9.6m<sup>2</sup> | 103ft<sup>2</sup>)  
BEDROOM 3  
3.2m x 3.0m (9.6m<sup>2</sup> | 103ft<sup>2</sup>)
- SECOND FLOOR (2)**  
BEDROOM 1  
6.0m x 3.0m (18m<sup>2</sup> | 194ft<sup>2</sup>)



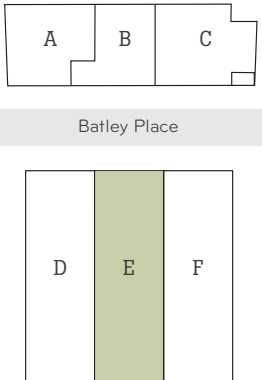
Predicted Energy Performance



The energy efficiency rating is a measure of the overall efficiency of a home. The higher the rating the more energy efficient the home is and the lower the fuel bills are likely to be.

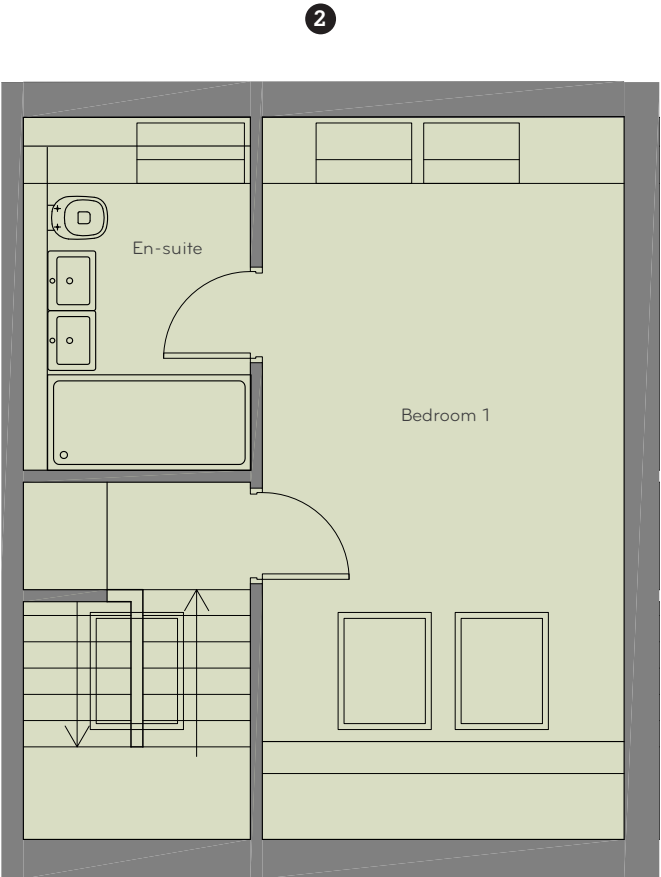
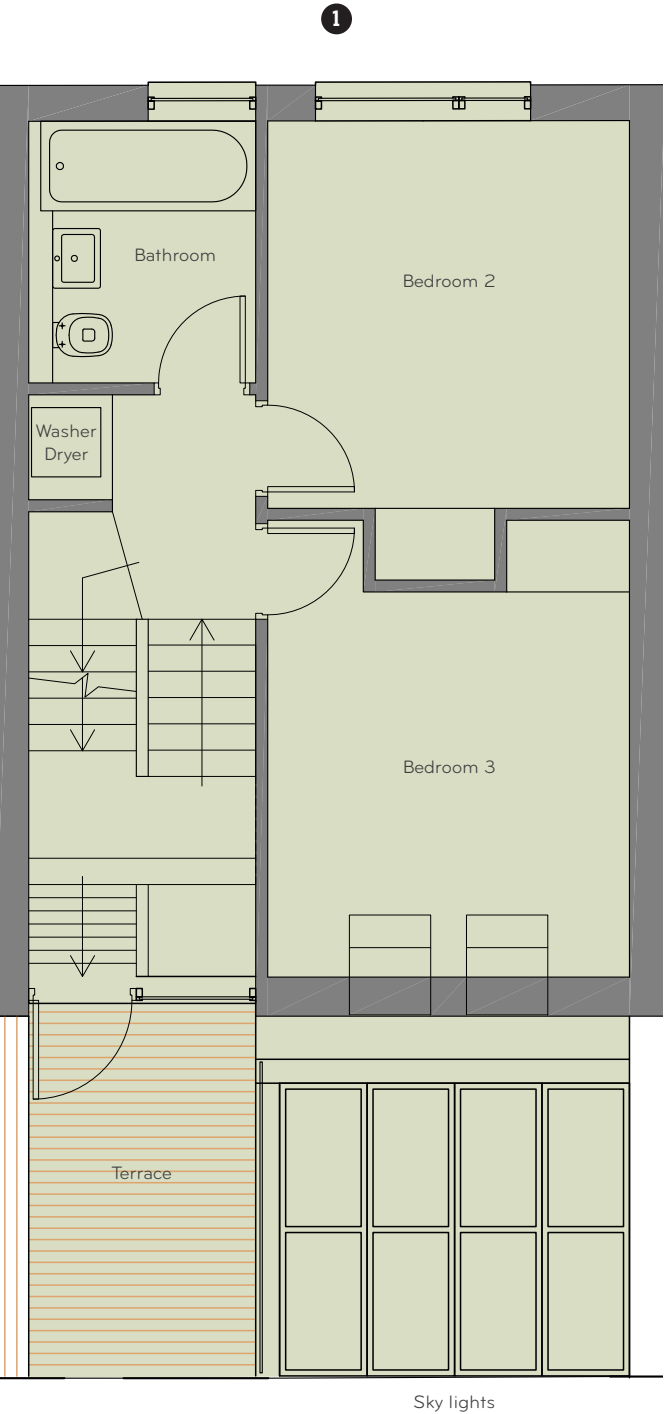
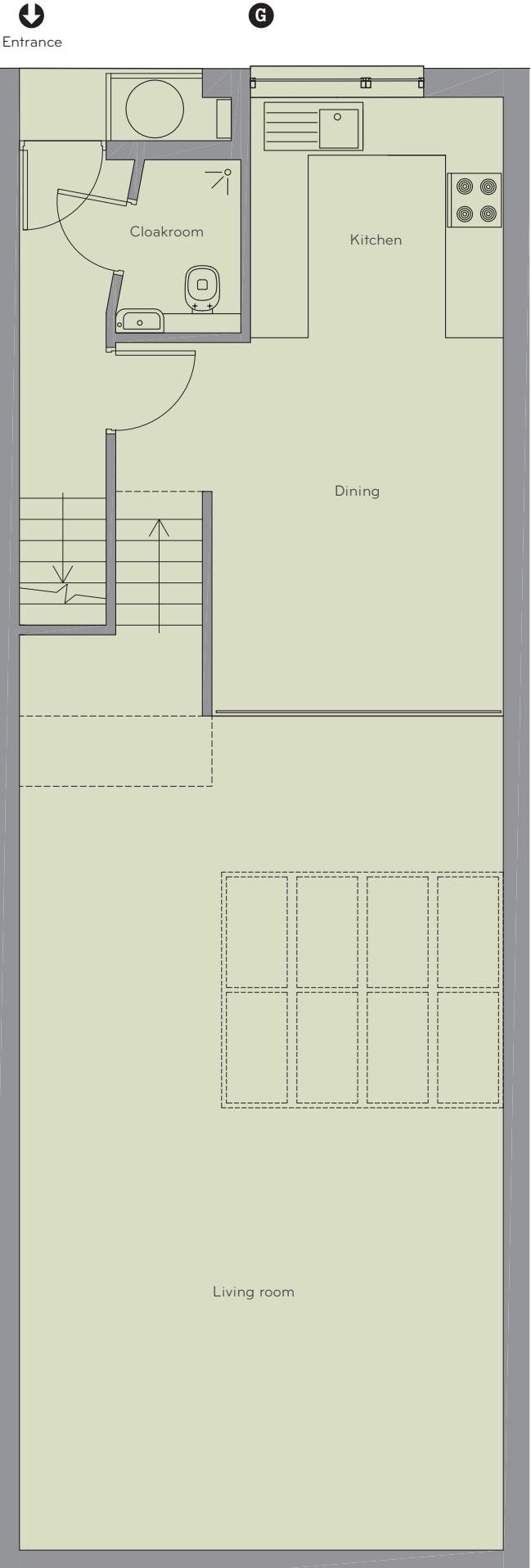


The environmental impact rating is a measure of a home's impact on the environment in terms of carbon dioxide (CO<sub>2</sub>) emissions. The higher the rating, the less impact it has on the environment.



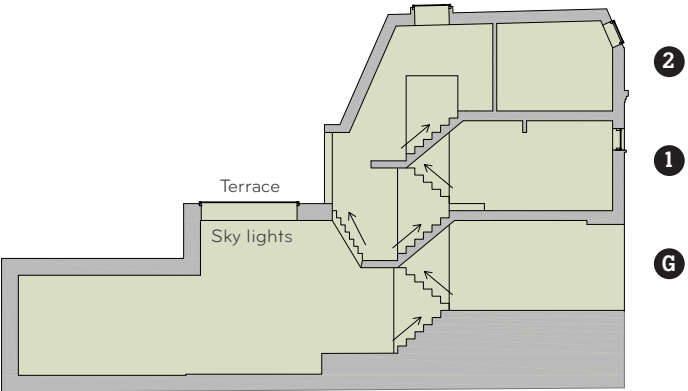
All measurements are gross internal areas. Terraces are not included in the calculation. Floorplans are correct at time of going to print. They may be subject to minor alterations. Please refer to batleyplace-n16.com for the most up to date drawings.



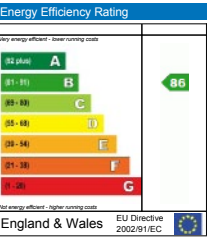


House F, Batley Place | 139m<sup>2</sup> | 1496ft<sup>2</sup> total area

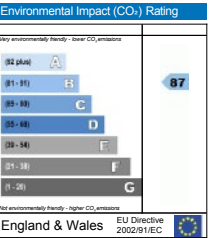
- GROUND FLOOR (G)**  
LIVING  
8.6m x 5.1m (43.9m<sup>2</sup> | 472ft<sup>2</sup>)  
KITCHEN / DINING  
6.4m x 3.0m (19.2m<sup>2</sup> | 207ft<sup>2</sup>)
- FIRST FLOOR (1)**  
BEDROOM 2  
3.2m x 3.0m (9.6m<sup>2</sup> | 103ft<sup>2</sup>)  
BEDROOM 3  
3.2m x 3.0m (9.6m<sup>2</sup> | 103ft<sup>2</sup>)
- SECOND FLOOR (2)**  
BEDROOM 1  
6.0m x 3.0m (18m<sup>2</sup> | 194ft<sup>2</sup>)



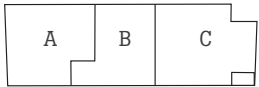
Predicted Energy Performance



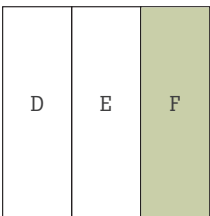
The energy efficiency rating is a measure of the overall efficiency of a home. The higher the rating the more energy efficient the home is and the lower the fuel bills are likely to be.



The environmental impact rating is a measure of a home's impact on the environment in terms of carbon dioxide (CO<sub>2</sub>) emissions. The higher the rating, the less impact it has on the environment.



Batley Place



All measurements are gross internal areas. Terraces are not included in the calculation. Floorplans are correct at time of going to print. They may be subject to minor alterations. Please refer to batleyplace-n16.com for the most up to date drawings.

