



<b>APARTMENT 6</b>
<b>TOTAL AREA (43.3m<sup>2</sup>   466.5ft<sup>2</sup>)</b>
LIVING, DINING, KITCHEN 3.6m x 5.3m (19.3m <sup>2</sup>   207.8ft <sup>2</sup> )
BEDROOM 3.3m x 2.8m (11.1m <sup>2</sup>   119.1ft <sup>2</sup> )

<b>APARTMENT 7</b>
<b>TOTAL AREA (44.8m<sup>2</sup>   482.7ft<sup>2</sup>)</b>
LIVING, DINING, KITCHEN 4.6m x 5.9m (22.6m <sup>2</sup>   243.4ft <sup>2</sup> )
BEDROOM 2.9m x 3.1m (10.9m <sup>2</sup>   117.4ft <sup>2</sup> )

<b>APARTMENT 8</b>
<b>TOTAL AREA (44.8m<sup>2</sup>   482.7ft<sup>2</sup>)</b>
LIVING, DINING, KITCHEN 4.6m x 5.9m (22.6m <sup>2</sup>   243.4ft <sup>2</sup> )
BEDROOM 2.9m x 3.1m (10.9m <sup>2</sup>   117.4ft <sup>2</sup> )

<b>APARTMENT 9</b>
<b>TOTAL AREA (44.5m<sup>2</sup>   479.5ft<sup>2</sup>)</b>
LIVING, DINING, KITCHEN 4.5m x 5.9m (21.9m <sup>2</sup>   236.2ft <sup>2</sup> )
BEDROOM 2.9m x 3.1m (10.9m <sup>2</sup>   117.4ft <sup>2</sup> )

<b>APARTMENT 10</b>
<b>TOTAL AREA (36.5m<sup>2</sup>   392.4ft<sup>2</sup>)</b>
LIVING, DINING, KITCHEN 3.3m x 5.9m (17.8m <sup>2</sup>   191.5ft <sup>2</sup> )
BEDROOM 2.8m x 3.1m (10.5m <sup>2</sup>   113.2ft <sup>2</sup> )

FLOOR 8
FLOOR 7
FLOOR 6
FLOOR 5
FLOOR 4
FLOOR 3
FLOOR 2
FLOOR 1
<b>GROUND FLOOR</b>

STAFFORD ROAD

Ground floor: Apartments 1 – 10



<b>APARTMENT 5</b>
<b>TOTAL AREA (49.7m<sup>2</sup>   535.2ft<sup>2</sup>)</b>
LIVING, DINING, KITCHEN 6.3m x 3.9m (25.3m <sup>2</sup>   272.5ft <sup>2</sup> )
BEDROOM 3.3m x 3.3m (12.6m <sup>2</sup>   135.7ft <sup>2</sup> )

<b>APARTMENT 4</b>
<b>TOTAL AREA (45.4m<sup>2</sup>   489.0ft<sup>2</sup>)</b>
LIVING, DINING, KITCHEN 4.6m x 6.0m (22.8m <sup>2</sup>   245.3ft <sup>2</sup> )
BEDROOM 2.9m x 3.0m (10.6m <sup>2</sup>   113.6ft <sup>2</sup> )

<b>APARTMENT 3</b>
<b>TOTAL AREA (45.4m<sup>2</sup>   489.0ft<sup>2</sup>)</b>
LIVING, DINING, KITCHEN 4.6m x 6.0m (22.8m <sup>2</sup>   245.3ft <sup>2</sup> )
BEDROOM 2.9m x 3.0m (10.6m <sup>2</sup>   113.6ft <sup>2</sup> )

<b>APARTMENT 2</b>
<b>TOTAL AREA (45.4m<sup>2</sup>   489.0ft<sup>2</sup>)</b>
LIVING, DINING, KITCHEN 4.6m x 6.0m (22.8m <sup>2</sup>   245.3ft <sup>2</sup> )
BEDROOM 2.9m x 3.0m (10.6m <sup>2</sup>   113.6ft <sup>2</sup> )

<b>APARTMENT 1</b>
<b>TOTAL AREA (45.1m<sup>2</sup>   485.9ft<sup>2</sup>)</b>
LIVING, DINING, KITCHEN 4.7m x 6.0m (23.1m <sup>2</sup>   248.9ft <sup>2</sup> )
BEDROOM 2.8m x 3.0m (10.2m <sup>2</sup>   110.1ft <sup>2</sup> )

All measurements are gross internal areas. Room sizes may be subject to minor alterations. Please refer to waddonhouse-cr0.com for the most up-to-date floor plans.

Head Office: IDM Properties LLP, Office B, West Gainsborough, 1 Poole Street, London N1 5EA

+44 (0)20 7739 1650  
mail@idmproperties.com  
idmproperties.com



FLOOR 8
FLOOR 7
FLOOR 6
FLOOR 5
FLOOR 4
FLOOR 3
FLOOR 2
FLOOR 1
GROUND FLOOR



**APARTMENT TYPE G**  
TOTAL AREA (43.2m<sup>2</sup> | 465.5ft<sup>2</sup>)

FLOOR	1	2	3	4	5	6
APARTMENT	17	28	39	50	61	72

LIVING, DINING, KITCHEN  
3.6m x 5.3m (19.3m<sup>2</sup> | 207.4ft<sup>2</sup>)

BEDROOM  
3.3m x 2.8m (11.0m<sup>2</sup> | 118.8ft<sup>2</sup>)

**APARTMENT TYPE H**  
TOTAL AREA (44.1m<sup>2</sup> | 474.5ft<sup>2</sup>)

FLOOR	1	2	3	4	5	6
APARTMENT	18	29	40	51	62	73

LIVING, DINING, KITCHEN  
4.6m x 5.9m (22.6m<sup>2</sup> | 243.4ft<sup>2</sup>)

BEDROOM  
2.9m x 3.1m (11.0m<sup>2</sup> | 118.2ft<sup>2</sup>)

**APARTMENT TYPE I**  
TOTAL AREA (44.7m<sup>2</sup> | 481.4ft<sup>2</sup>)

FLOOR	1	2	3	4	5	6
APARTMENT	19	30	41	52	63	74

LIVING, DINING, KITCHEN  
4.6m x 5.9m (22.6m<sup>2</sup> | 243.4ft<sup>2</sup>)

BEDROOM  
2.9m x 3.1m (10.8m<sup>2</sup> | 116.6ft<sup>2</sup>)

**APARTMENT TYPE J**  
TOTAL AREA (43.8m<sup>2</sup> | 471.6ft<sup>2</sup>)

FLOOR	1	2	3	4	5	6
APARTMENT	20	31	42	53	64	75

LIVING, DINING, KITCHEN  
4.5m x 5.9m (21.9m<sup>2</sup> | 236.2ft<sup>2</sup>)

BEDROOM  
2.9m x 3.1m (11.0m<sup>2</sup> | 118.2ft<sup>2</sup>)

**APARTMENT TYPE K**  
TOTAL AREA (36.5m<sup>2</sup> | 392.8ft<sup>2</sup>)

FLOOR	1	2	3	4	5	6
APARTMENT	21	32	43	54	65	76

LIVING, DINING, KITCHEN  
3.3m x 5.9m (17.8m<sup>2</sup> | 191.5ft<sup>2</sup>)

BEDROOM  
2.8m x 3.1m (10.5m<sup>2</sup> | 113.1ft<sup>2</sup>)



**APARTMENT TYPE F**  
TOTAL AREA (51.4m<sup>2</sup> | 553.3ft<sup>2</sup>)

FLOOR	1	2	3	4	5	6
APARTMENT	16	27	38	49	60	71

LIVING, DINING, KITCHEN  
6.3m x 4.8m (28.5m<sup>2</sup> | 306.5ft<sup>2</sup>)

BEDROOM  
3.4m x 2.9m (10.4m<sup>2</sup> | 112.0ft<sup>2</sup>)

**APARTMENT TYPE E**  
TOTAL AREA (45.4m<sup>2</sup> | 489.0ft<sup>2</sup>)

FLOOR	1	2	3	4	5	6
APARTMENT	15	26	37	48	59	70

LIVING, DINING, KITCHEN  
4.6m x 6.0m (22.8m<sup>2</sup> | 245.3ft<sup>2</sup>)

BEDROOM  
2.9m x 3.0m (10.6m<sup>2</sup> | 113.6ft<sup>2</sup>)

**APARTMENT TYPE D**  
TOTAL AREA (45.4m<sup>2</sup> | 489.0ft<sup>2</sup>)

FLOOR	1	2	3	4	5	6
APARTMENT	14	25	36	47	58	69

LIVING, DINING, KITCHEN  
4.6m x 6.0m (22.8m<sup>2</sup> | 245.3ft<sup>2</sup>)

BEDROOM  
2.9m x 3.0m (10.6m<sup>2</sup> | 114.5ft<sup>2</sup>)

**APARTMENT TYPE C**  
TOTAL AREA (45.1m<sup>2</sup> | 485.2ft<sup>2</sup>)

FLOOR	1	2	3	4	5	6
APARTMENT	13	24	35	46	57	68

LIVING, DINING, KITCHEN  
4.6m x 6.0m (22.8m<sup>2</sup> | 245.1ft<sup>2</sup>)

BEDROOM  
2.8m x 3.0m (10.3m<sup>2</sup> | 111.3ft<sup>2</sup>)

**APARTMENT TYPE B**  
TOTAL AREA (36.6m<sup>2</sup> | 394.4ft<sup>2</sup>)

FLOOR	1	2	3	4	5	6
APARTMENT	12	23	34	45	56	67

LIVING, DINING, KITCHEN  
5.0m x 3.6m (16.9m<sup>2</sup> | 181.4ft<sup>2</sup>)

BEDROOM  
2.6m x 3.0m (9.6m<sup>2</sup> | 103.0ft<sup>2</sup>)

**APARTMENT TYPE A**  
TOTAL AREA (42.6m<sup>2</sup> | 458.4ft<sup>2</sup>)

FLOOR	1	2	3	4	5	6
APARTMENT	11	22	33	44	55	66

LIVING, DINING, KITCHEN  
5.1m x 3.8m (19.2m<sup>2</sup> | 206.3ft<sup>2</sup>)

BEDROOM  
3.5m x 2.8m (11.4m<sup>2</sup> | 123.2ft<sup>2</sup>)

All measurements are gross internal areas. Room sizes may be subject to minor alterations. Please refer to waddonhouse-cr0.com for the most up-to-date floor plans.

Head Office: IDM Properties LLP,  
Office B, West Gainsborough,  
1 Poole Street, London N1 5EA

+44 (0)20 7739 1650  
mail@idmproperties.com  
idmproperties.com

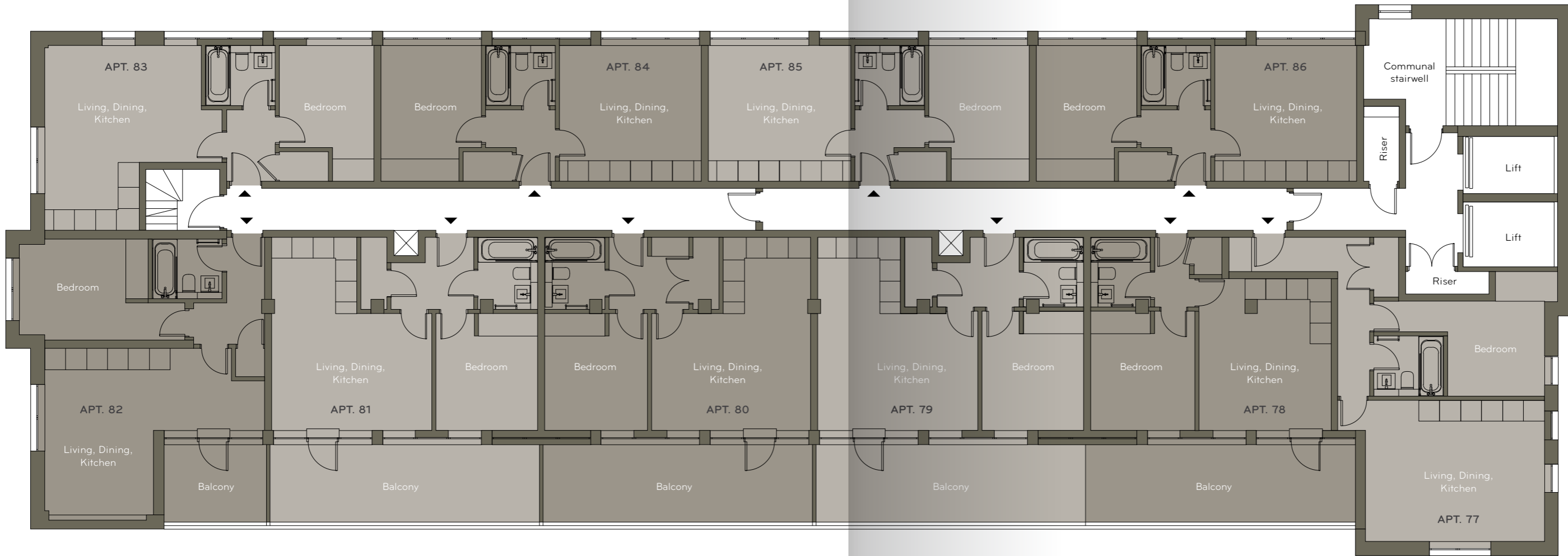


FLOOR 8
<b>FLOOR 7</b>
FLOOR 6
FLOOR 5
FLOOR 4
FLOOR 3
FLOOR 2
FLOOR 1
GROUND FLOOR



<b>APARTMENT 83</b> TOTAL AREA (39.2m <sup>2</sup>   422.1ft <sup>2</sup> )	<b>APARTMENT 84</b> TOTAL AREA (35.8m <sup>2</sup>   385.7ft <sup>2</sup> )
LIVING, DINING, KITCHEN 4.5m x 5.3m (21.3m <sup>2</sup>   228.8ft <sup>2</sup> )	LIVING, DINING, KITCHEN 4.1m x 3.9m (15.9m <sup>2</sup>   170.8ft <sup>2</sup> )
BEDROOM 2.7m x 3.2m (9.0m <sup>2</sup>   97.3ft <sup>2</sup> )	BEDROOM 2.9m x 3.2m (10.6m <sup>2</sup>   114.2ft <sup>2</sup> )

<b>APARTMENT 85</b> TOTAL AREA (35.8m <sup>2</sup>   385.7ft <sup>2</sup> )	<b>APARTMENT 86</b> TOTAL AREA (35.8m <sup>2</sup>   385.7ft <sup>2</sup> )
LIVING, DINING, KITCHEN 4.1m x 3.9m (15.9m <sup>2</sup>   170.8ft <sup>2</sup> )	LIVING, DINING, KITCHEN 4.1m x 3.9m (15.9m <sup>2</sup>   170.8ft <sup>2</sup> )
BEDROOM 2.9m x 3.2m (10.6m <sup>2</sup>   114.2ft <sup>2</sup> )	BEDROOM 2.9m x 3.2m (10.6m <sup>2</sup>   114.2ft <sup>2</sup> )



<b>APARTMENT 82</b> TOTAL AREA (44.1m <sup>2</sup>   474.4ft <sup>2</sup> )	<b>APARTMENT 81</b> TOTAL AREA (41.2m <sup>2</sup>   443.1ft <sup>2</sup> )	<b>APARTMENT 80</b> TOTAL AREA (42.0m <sup>2</sup>   451.7ft <sup>2</sup> )
LIVING, DINING, KITCHEN 6.3m x 4.9m (21.5m <sup>2</sup>   231.4ft <sup>2</sup> )	LIVING, DINING, KITCHEN 4.6m x 5.6m (20.7m <sup>2</sup>   223.2ft <sup>2</sup> )	LIVING, DINING, KITCHEN 4.6m x 5.6m (20.8m <sup>2</sup>   223.7ft <sup>2</sup> )
BEDROOM 3.0m x 2.9m (11.5m <sup>2</sup>   123.7ft <sup>2</sup> )	BEDROOM 2.9m x 2.7m (9.7m <sup>2</sup>   104.9ft <sup>2</sup> )	BEDROOM 2.9m x 2.7m (9.8m <sup>2</sup>   105.8ft <sup>2</sup> )

<b>APARTMENT 79</b> TOTAL AREA (41.1m <sup>2</sup>   442.8ft <sup>2</sup> )	<b>APARTMENT 78</b> TOTAL AREA (34.2m <sup>2</sup>   368.3ft <sup>2</sup> )	<b>APARTMENT 77</b> TOTAL AREA (46.0m <sup>2</sup>   495.5ft <sup>2</sup> )
LIVING, DINING, KITCHEN 4.6m x 5.6m (20.6m <sup>2</sup>   222.0ft <sup>2</sup> )	LIVING, DINING, KITCHEN 3.8m x 4.4m (16.4m <sup>2</sup>   176.2ft <sup>2</sup> )	LIVING, DINING, KITCHEN 5.1m x 4.1m (21.4m <sup>2</sup>   230.8ft <sup>2</sup> )
BEDROOM 2.9m x 2.8m (9.9m <sup>2</sup>   106.3ft <sup>2</sup> )	BEDROOM 3.0m x 2.8m (10.1m <sup>2</sup>   109.1ft <sup>2</sup> )	BEDROOM 2.7m x 2.8m (11.0m <sup>2</sup>   118.0ft <sup>2</sup> )

All measurements are gross internal areas. Room sizes may be subject to minor alterations. Please refer to waddonhouse-cr0.com for the most up-to-date floor plans.

Head Office: IDM Properties LLP,  
Office B, West Gainsborough,  
1 Poole Street, London N1 5EA

+44 (0)20 7739 1650  
mail@idmproperties.com  
idmproperties.com





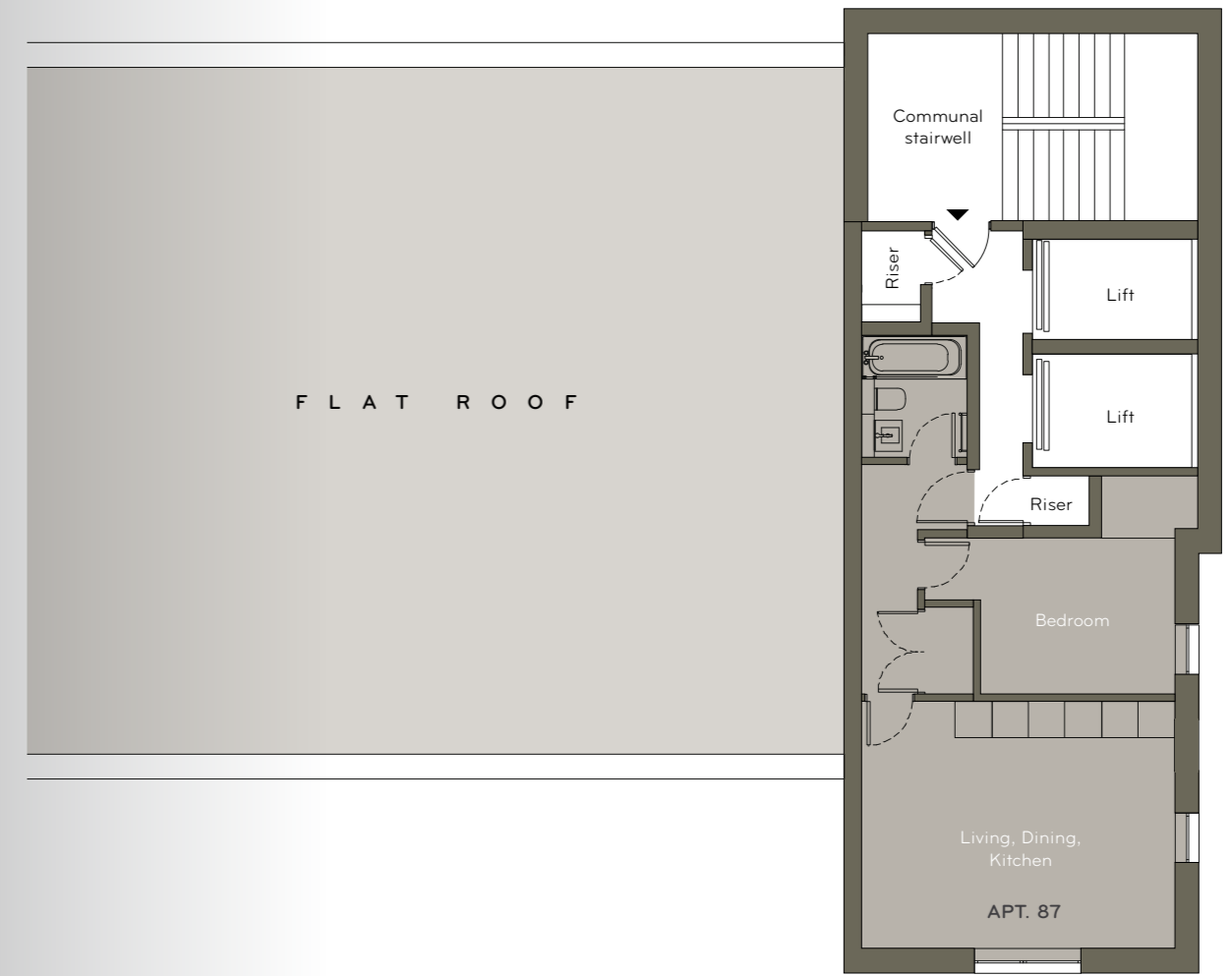
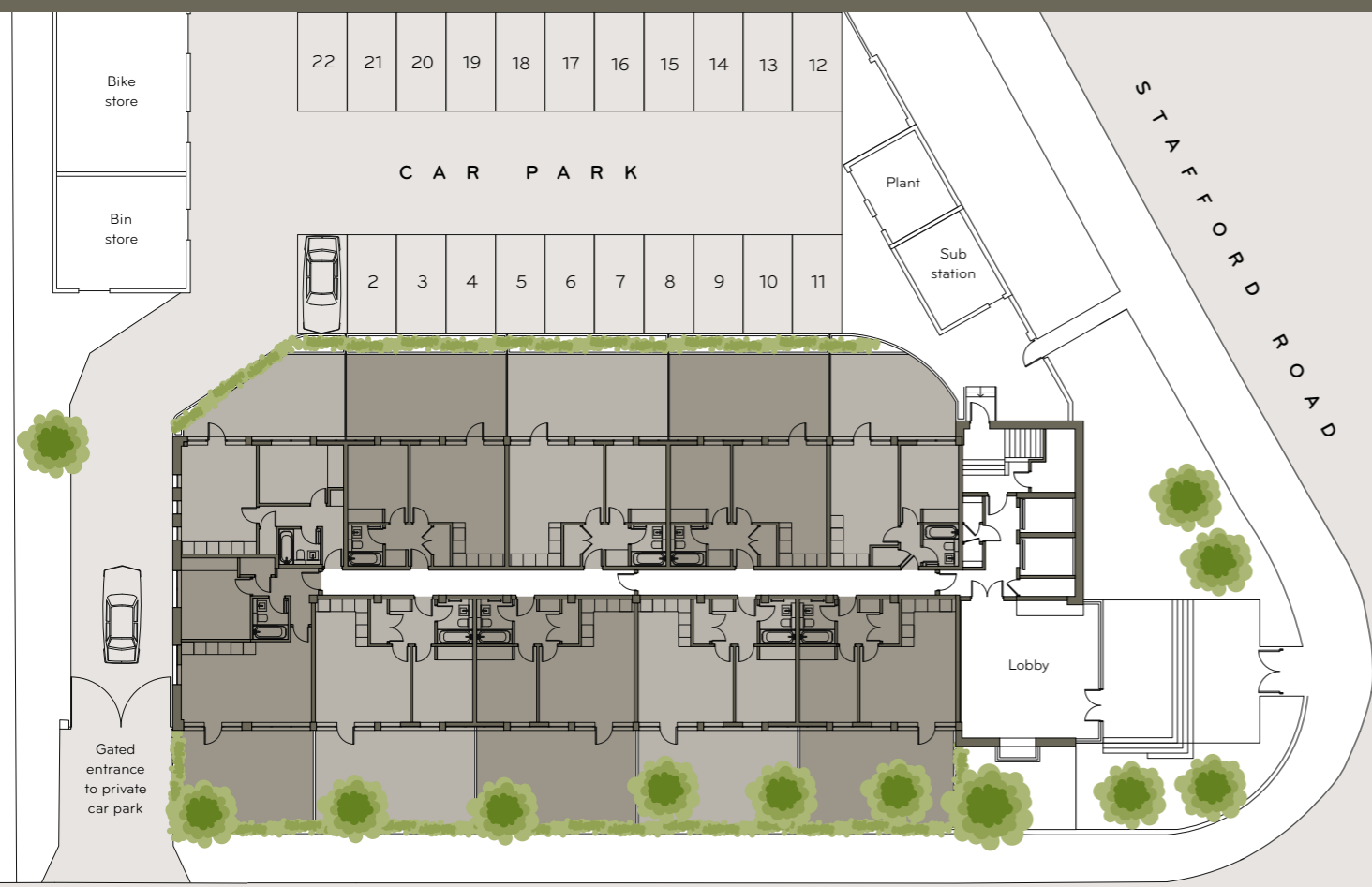
TYPICAL PREDICTED ENERGY PERFORMANCE FOR ALL APARTMENTS

ENERGY EFFICIENCY RATING	88
ENVIRONMENTAL IMPACT (CO <sup>2</sup> ) RATING	91

FLOOR 8
FLOOR 7
FLOOR 6
FLOOR 5
FLOOR 4
FLOOR 3
FLOOR 2
FLOOR 1
GROUND FLOOR



## Site plan & parking spaces (optional extra)



**APARTMENT 87**

TOTAL AREA	(41.7m <sup>2</sup>   448.9ft <sup>2</sup> )
LIVING, DINING, KITCHEN	5.1m x 4.1m (20.8m <sup>2</sup>   224.1ft <sup>2</sup> )
BEDROOM	3.2m x 2.6m (10.6m <sup>2</sup>   113.8ft <sup>2</sup> )

All measurements are gross internal areas. Room sizes may be subject to minor alterations. Please refer to waddonhouse-cr0.com for the most up-to-date floor plans.

Head Office: IDM Properties LLP, Office B, West Gainsborough, 1 Poole Street, London N1 5EA

+44 (0)20 7739 1650  
mail@idmproperties.com  
idmproperties.com

