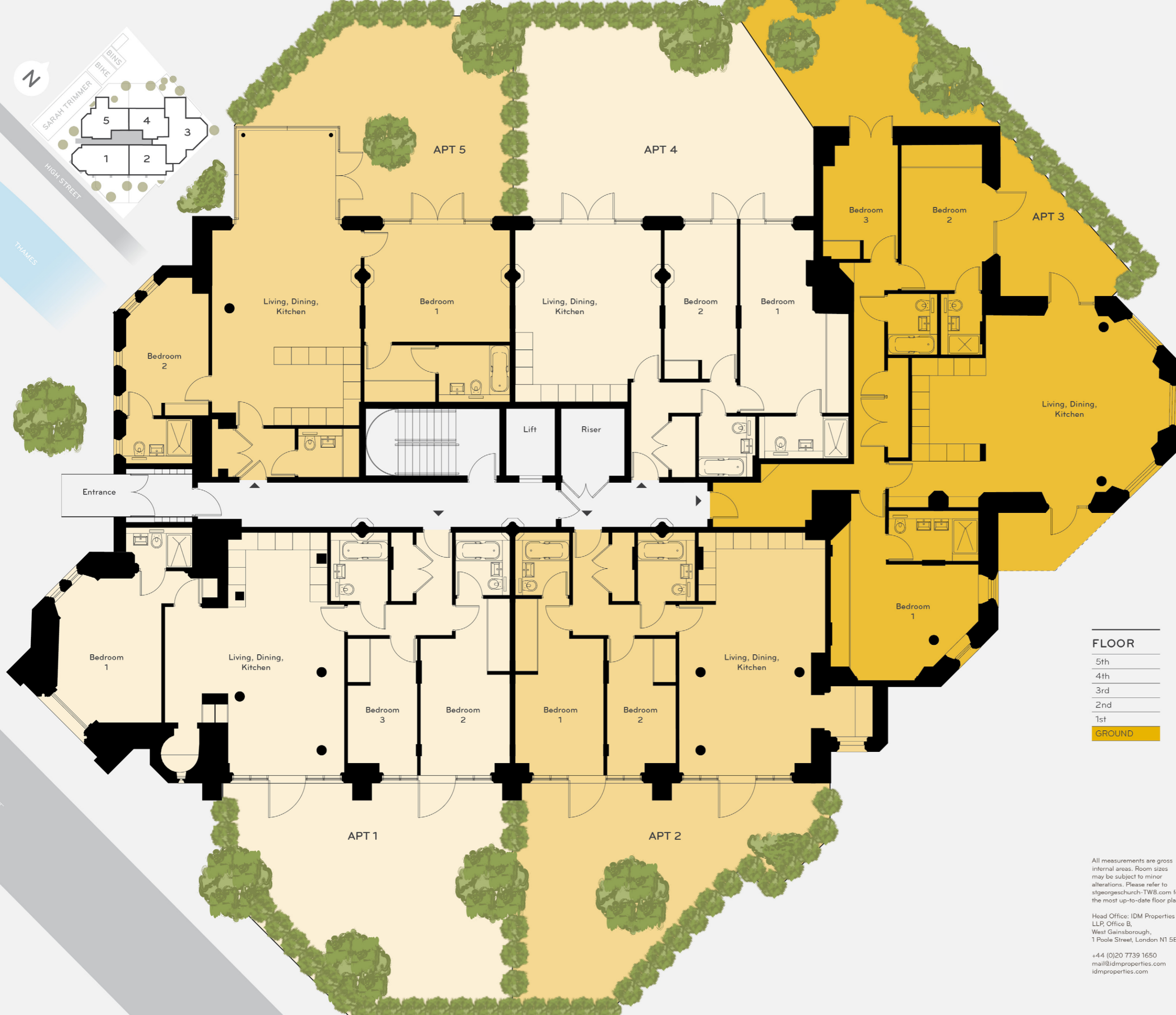




St Georges | Floorplans



APARTMENT 1
 Total Area (112.6m², 1212.0ft²)
 Living, Dining, Kitchen
 6.2m x 8.2m (41.2m², 443.5ft²)
 Bedroom 1
 3.0m x 5.9m (16.4m², 176.5ft²)
 Bedroom 2
 2.4m x 4.5m (10.6m², 114.1ft²)
 Bedroom 3
 3.5m x 4.8m (17.8m², 191.6ft²)
 ENERGY EFFICIENCY RATING 79C
 ENVIRONMENTAL IMPACT (CO₂) 80C

APARTMENT 2
 Total Area (89.8m², 966.6ft²)
 Living, Dining, Kitchen
 5.0m x 8.2m (37.5m², 403.6ft²)
 Bedroom 1
 3.0m x 5.9m (16.3m², 175.5ft²)
 Bedroom 2
 2.4m x 4.5m (10.4m², 111.9ft²)
 ENERGY EFFICIENCY RATING 80C
 ENVIRONMENTAL IMPACT (CO₂) 82B

APARTMENT 3
 Total Area (132.4m², 1425.1ft²)
 Living, Dining, Kitchen
 8.8m x 6.0m (49.1m², 528.5ft²)
 Bedroom 1
 2.6m x 3.8m (9.6m², 103.3ft²)
 Bedroom 2
 3.2m x 4.9m (14.8m², 159.3ft²)
 Bedroom 3
 5.0m x 4.0m (19.9m², 214.2ft²)
 ENERGY EFFICIENCY RATING 74C
 ENVIRONMENTAL IMPACT (CO₂) 76C

APARTMENT 4
 Total Area (83.5m², 898.8ft²)
 Living, Dining, Kitchen
 5.0m x 5.9m (28.8m², 310.0ft²)
 Bedroom 1
 2.5m x 5.1m (12.8m², 137.8ft²)
 Bedroom 2
 3.7m x 6.3m (19.8m², 213.1ft²)
 ENERGY EFFICIENCY RATING 78C
 ENVIRONMENTAL IMPACT (CO₂) 79C

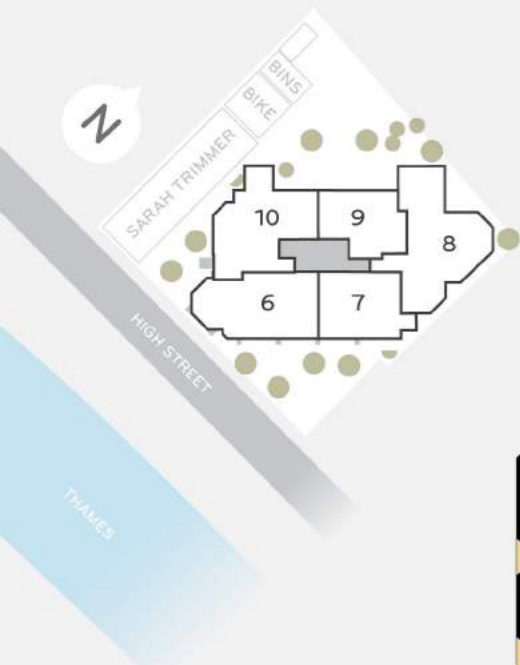
APARTMENT 5
 Total Area (103.5m², 1114.1ft²)
 Living, Dining, Kitchen
 5.1m x 10.1m (45.4m², 488.7ft²)
 Bedroom 1
 2.7m x 4.5m (11.7m², 125.9ft²)
 Bedroom 2
 5.0m x 3.9m (19.2m², 206.7ft²)
 ENERGY EFFICIENCY RATING 73C
 ENVIRONMENTAL IMPACT (CO₂) 75C

- FLOOR**
- 5th
 - 4th
 - 3rd
 - 2nd
 - 1st
 - GROUND**

All measurements are gross internal areas. Room sizes may be subject to minor alterations. Please refer to stgeorgeschurch-TW8.com for the most up-to-date floor plans.

Head Office: IDM Properties LLP, Office B, West Gainsborough, 1 Poole Street, London N1 5EA

+44 (0)20 7739 1650
 mail@idmproperties.com
 idmproperties.com



FLOOR
5th
4th
3rd
2nd
1st
GROUND

APARTMENT 6	
Total Area (108.5m ² , 1167.9ft ²)	
Living, Dining, Kitchen 9.1m x 8.2m (54.9m ² , 590.9ft ²)	
Bedroom 1	3.1m x 4.5m (16.4m ² , 176.5ft ²)
Bedroom 2	3.2m x 4.2m (14.0m ² , 150.7ft ²)
ENERGY EFFICIENCY RATING	82B
ENVIRONMENTAL IMPACT (CO ₂)	84B

APARTMENT 7	
Total Area (85.9m ² , 924.6ft ²)	
Living, Dining, Kitchen 4.2m x 8.2m (32.6m ² , 350.9ft ²)	
Bedroom 1	3.0m x 4.5m (16.2m ² , 174.4ft ²)
Bedroom 2	3.1m x 4.2m (13.8m ² , 148.5ft ²)
ENERGY EFFICIENCY RATING	84B
ENVIRONMENTAL IMPACT (CO ₂)	85B

APARTMENT 8	
Total Area (131.3m ² , 1413.3ft ²)	
Living, Dining, Kitchen 8.8m x 5.9m (47.9m ² , 515.6ft ²)	
Bedroom 1	2.5m x 3.8m (9.4m ² , 101.2ft ²)
Bedroom 2	2.7m x 4.9m (13.0m ² , 139.9ft ²)
Bedroom 3	5.1m x 4.1m (21.9m ² , 235.7ft ²)
ENERGY EFFICIENCY RATING	77C
ENVIRONMENTAL IMPACT (CO ₂)	79B

APARTMENT 9	
Total Area (83.5m ² , 898.8ft ²)	
Living, Dining, Kitchen 5.0m x 5.9m (28.8m ² , 310.0ft ²)	
Bedroom 1	2.5m x 5.1m (12.9m ² , 138.9ft ²)
Bedroom 2	3.7m x 6.3m (19.8m ² , 213.1ft ²)
ENERGY EFFICIENCY RATING	81B
ENVIRONMENTAL IMPACT (CO ₂)	83B

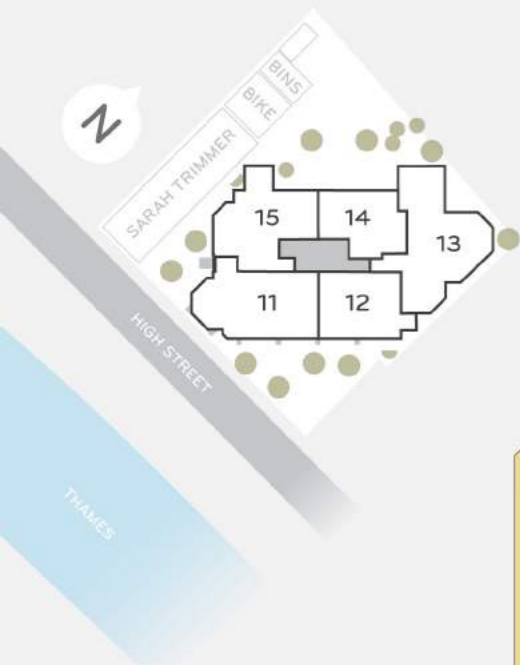
APARTMENT 10	
Total Area (113.4m ² , 1220.6ft ²)	
Living, Dining, Kitchen 8.0m x 6.2m (43.1m ² , 463.9ft ²)	
Bedroom 1	4.1m x 3.1m (18.5m ² , 199.1ft ²)
Bedroom 2	5.0m x 3.9m (21.6m ² , 232.5ft ²)
Bedroom 3	5.0m x 3.9m (21.6m ² , 232.5ft ²)
ENERGY EFFICIENCY RATING	78C
ENVIRONMENTAL IMPACT (CO ₂)	80C

All measurements are gross internal areas. Room sizes may be subject to minor alterations. Please refer to stgeorgeschurch-TW8.com for the most up-to-date floor plans.

Head Office: IDM Properties LLP, Office B, West Gainsborough, 1 Poole Street, London N1 5EA

+44 (0)20 7739 1650
mail@idmproperties.com
idmproperties.com





FLOOR
5th
4th
3rd
2nd
1st
GROUND

APARTMENT 11	
Total Area (109.4m ² , 1177.6ft ²)	
Living, Dining, Kitchen 9.6m x 8.3m (55.2m ² , 594.2ft ²)	
Bedroom 1	3.1m x 4.3m (16.4m ² , 176.5ft ²)
Bedroom 2	3.2m x 4.2m (14.0m ² , 150.7ft ²)
ENERGY EFFICIENCY RATING	82B
ENVIRONMENTAL IMPACT (CO ₂)	83B

APARTMENT 12	
Total Area (85.5m ² , 920.3ft ²)	
Living, Dining, Kitchen 4.2m x 8.2m (32.4m ² , 348.8ft ²)	
Bedroom 1	3.1m x 4.3m (16.2m ² , 174.4ft ²)
Bedroom 2	3.1m x 3.5m (13.8m ² , 148.5ft ²)
ENERGY EFFICIENCY RATING	85B
ENVIRONMENTAL IMPACT (CO ₂)	86B

APARTMENT 13	
Total Area (129.7m ² , 1396.1ft ²)	
Living, Dining, Kitchen 8.9m x 5.9m (44.4m ² , 477.9ft ²)	
Bedroom 1	5.5m x 4.9m (24.5m ² , 263.7ft ²)
Bedroom 2	5.2m x 3.9m (21.2m ² , 228.2ft ²)
ENERGY EFFICIENCY RATING	75C
ENVIRONMENTAL IMPACT (CO ₂)	77C

APARTMENT 14	
Total Area (83.9m ² , 903.1ft ²)	
Living, Dining, Kitchen 5.0m x 5.9m (29.0m ² , 312.2ft ²)	
Bedroom 1	2.5m x 4.5m (12.8m ² , 137.8ft ²)
Bedroom 2	3.7m x 6.3m (20.0m ² , 215.3ft ²)
ENERGY EFFICIENCY RATING	80C
ENVIRONMENTAL IMPACT (CO ₂)	81B

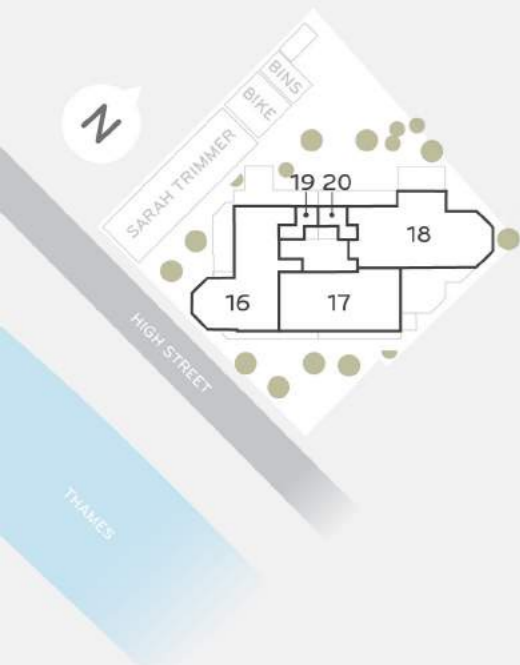
APARTMENT 15	
Total Area (89.8m ² , 966.6ft ²)	
Living, Dining, Kitchen 5.4m x 6.9m (31.5m ² , 339.1ft ²)	
Bedroom 1	4.3m x 3.0m (13.5m ² , 145.3ft ²)
Bedroom 2	5.0m x 3.7m (18.6m ² , 200.2ft ²)
ENERGY EFFICIENCY RATING	75C
ENVIRONMENTAL IMPACT (CO ₂)	77C

All measurements are gross internal areas. Room sizes may be subject to minor alterations. Please refer to stgeorgeschurch-TWB.com for the most up-to-date floor plans.

Head Office: IDM Properties LLP, Office B, West Gainsborough, 1 Poole Street, London N1 5EA

+44 (0)20 7739 1650
mail@idmproperties.com
idmproperties.com





FLOOR
5th
4th
3rd
2nd
1st
GROUND

APARTMENT 16	
Total Area (115.5m ² , 1243.2ft ²)	
Living, Dining, Kitchen 10.4m x 6.0m (48.7m ² , 524.2ft ²)	
Bedroom 1	4.2m x 3.5m (14.7m ² , 158.2ft ²)
Bedroom 2	5.4m x 2.9m (15.8m ² , 170.1ft ²)
ENERGY EFFICIENCY RATING	79C
ENVIRONMENTAL IMPACT (CO ₂)	80C

APARTMENT 17	
Total Area (116.5m ² , 1254.0ft ²)	
Living, Dining, Kitchen 5.1m x 7.9m (40.1m ² , 431.6ft ²)	
Bedroom 1	2.2m x 4.1m (8.9m ² , 95.8ft ²)
Bedroom 2	3.5m x 4.1m (14.3m ² , 153.9ft ²)
Bedroom 3	4.3m x 5.3m (31.4m ² , 338.0ft ²)
ENERGY EFFICIENCY RATING	73C
ENVIRONMENTAL IMPACT (CO ₂)	75C

APARTMENT 18 (DUPLEX)	
Total Area (131.8m ² , 1418.7ft ²)	
Living, Dining, Kitchen 9.5m x 6.1m (54.7m ² , 588.8ft ²)	
Bedroom 1	4.2m x 3.3m (15.0m ² , 161.5ft ²)
Bedroom 2	3.6m x 3.1m (13.6m ² , 146.4ft ²)
ENERGY EFFICIENCY RATING	76C
ENVIRONMENTAL IMPACT (CO ₂)	78C

APARTMENT 19 (TRIPLEX)	
Total Area (112.7m ² , 1213.1ft ²)	
Living, Dining, Kitchen 5.0m x 6.8m (32.6m ² , 350.9ft ²)	
Bedroom 1	5.1m x 3.4m (17.5m ² , 188.4ft ²)
Bedroom 2	3.5m x 3.1m (10.8m ² , 116.3ft ²)
Bedroom 3	5.0m x 3.4m (12.3m ² , 132.4ft ²)
ENERGY EFFICIENCY RATING	78C
ENVIRONMENTAL IMPACT (CO ₂)	79C

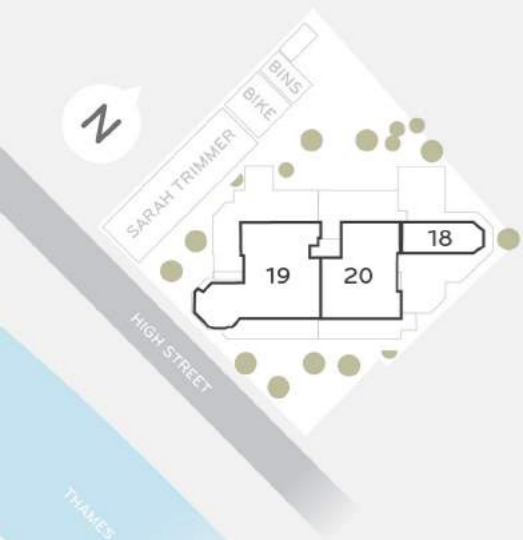
APARTMENT 20 (DUPLEX)	
Total Area (163.6m ² , 1761.0ft ²)	
Living, Dining, Kitchen 11.6m x 6.9m (58.0m ² , 624.3ft ²)	
Bedroom 1	3.3m x 4.4m (18.1m ² , 194.8ft ²)
Bedroom 2	3.0m x 2.9m (7.8m ² , 84.0ft ²)
ENERGY EFFICIENCY RATING	76C
ENVIRONMENTAL IMPACT (CO ₂)	78C

All measurements are gross internal areas. Room sizes may be subject to minor alterations. Please refer to stgeorgeschurch-TWB.com for the most up-to-date floor plans.

Head Office: IDM Properties LLP, Office B, West Gainsborough, 1 Poole Street, London N1 5EA

+44 (0)20 7739 1650
mail@idmproperties.com
idmproperties.com





FLOOR
5th
4th
3rd
2nd
1st
GROUND

APARTMENT 18 (DUPLEX)

Total Area (131.8m², 1418.7ft²)

Living, Dining, Kitchen
9.5m x 6.1m (54.7m², 588.8ft²)

Bedroom 1
4.2m x 3.3m (15.0m², 161.5ft²)

Bedroom 2
3.6m x 3.1m (13.6m², 146.4ft²)

ENERGY EFFICIENCY RATING 76C
ENVIRONMENTAL IMPACT (CO₂) 78C

APARTMENT 19 (TRIPLEX)

Total Area (112.7m², 1213.1ft²)

Living, Dining, Kitchen
5.0m x 6.8m (32.6m², 350.9ft²)

Bedroom 1
5.1m x 3.4m (17.5m², 188.4ft²)

Bedroom 2
3.5m x 3.1m (10.8m², 116.3ft²)

Bedroom 3
5.0m x 3.4m (12.3m², 132.4ft²)

ENERGY EFFICIENCY RATING 78C
ENVIRONMENTAL IMPACT (CO₂) 79C

APARTMENT 20 (DUPLEX)

Total Area (163.6m², 1761.0ft²)

Living, Dining, Kitchen
11.6m x 6.9m (58.0m², 624.3ft²)

Bedroom 1
3.3m x 4.4m (18.1m², 194.8ft²)

Bedroom 2
3.0m x 2.9m (7.8m², 84.0ft²)

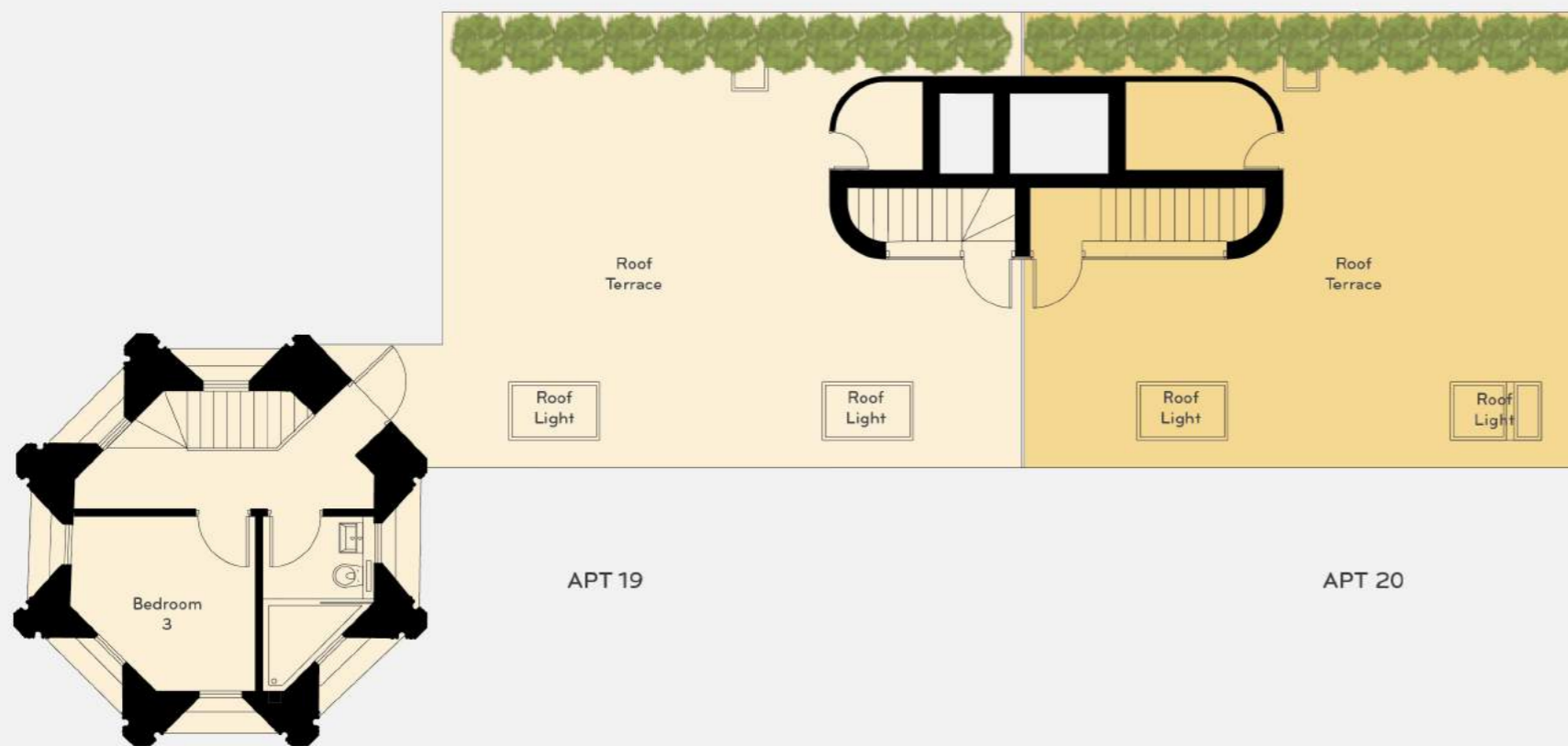
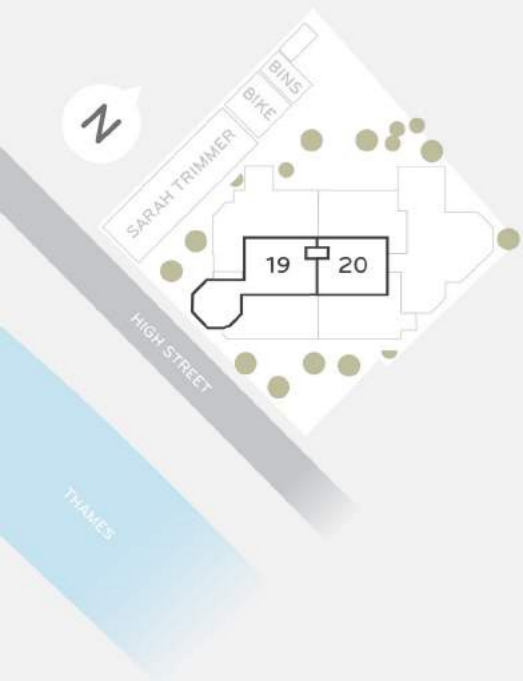
ENERGY EFFICIENCY RATING 76C
ENVIRONMENTAL IMPACT (CO₂) 78C

All measurements are gross internal areas. Room sizes may be subject to minor alterations. Please refer to stgeorgeschurch-TWB.com for the most up-to-date floor plans.

Head Office: IDM Properties LLP, Office B, West Gainsborough, 1 Poole Street, London N1 5EA

+44 (0)20 7739 1650
mail@idmproperties.com
idmproperties.com





FLOOR
5th
4th
3rd
2nd
1st
GROUND

APARTMENT 19 (TRIPLEX)
Total Area (112.7m², 1213.1ft²)

Living, Dining, Kitchen
5.0m x 6.8m (32.6m², 350.9ft²)

Bedroom 1
5.1m x 3.4m (17.5m², 188.4ft²)

Bedroom 2
3.5m x 3.1m (10.8m², 116.3ft²)

Bedroom 3
5.0m x 3.4m (12.3m², 132.4ft²)

ENERGY EFFICIENCY RATING 78C
ENVIRONMENTAL IMPACT (CO₂) 79C

APARTMENT 20 (DUPLEX)
Total Area (163.6m², 1761.0ft²)

Living, Dining, Kitchen
11.6m x 6.9m (58.0m², 624.3ft²)

Bedroom 1
3.3m x 4.4m (18.1m², 194.8ft²)

Bedroom 2
3.0m x 2.9m (7.8m², 84.0ft²)

ENERGY EFFICIENCY RATING 76C
ENVIRONMENTAL IMPACT (CO₂) 78C

All measurements are gross internal areas. Room sizes may be subject to minor alterations. Please refer to stgeorgeschurch-TWB.com for the most up-to-date floor plans.

Head Office: IDM Properties LLP, Office B, West Gainsborough, 1 Poole Street, London N1 5EA

+44 (0)20 7739 1650
mail@idmproperties.com
idmproperties.com

