



St Georges | Floorplans



APARTMENT 1	
Total Area (110.6m ² , 1190.5ft ²)	
Living, dining, kitchen 6.1m x 8.4m (38.9m ² , 418.4ft ²)	
Bedroom 1 3.1m x 5.7m (16.3m ² , 175.1ft ²)	
Bedroom 2 3.4m x 3.9m (16.1m ² , 173.3ft ²)	
Bedroom 3 2.4m x 4.5m (10.4m ² , 111.8ft ²)	
ENERGY EFFICIENCY RATING	79C
ENVIRONMENTAL IMPACT (CO ₂)	80C

APARTMENT 2	
Total Area (87.9m ² , 946.2ft ²)	
Living, dining, kitchen 5.0m x 8.4m (39.2m ² , 421.9ft ²)	
Bedroom 1 3.0m x 5.7m (15.9m ² , 171.5ft ²)	
Bedroom 2 2.5m x 4.5m (10.5m ² , 112.5ft ²)	
ENERGY EFFICIENCY RATING	80C
ENVIRONMENTAL IMPACT (CO ₂)	82B

APARTMENT 3	
Total Area (123.4m ² , 1328.3ft ²)	
Living, dining, kitchen 8.3m x 5.8m (41.6m ² , 447.8ft ²)	
Bedroom 1 4.9m x 5.2m (18.8m ² , 201.9ft ²)	
Bedroom 2 3.2m x 4.0m (13.1m ² , 140.9ft ²)	
Bedroom 3 2.5m x 4.8m (9.0m ² , 96.9ft ²)	
ENERGY EFFICIENCY RATING	74C
ENVIRONMENTAL IMPACT (CO ₂)	76C

APARTMENT 4	
Total Area (83.1m ² , 894.5ft ²)	
Living, dining, kitchen 5.1m x 6.1m (29.6m ² , 318.1ft ²)	
Bedroom 1 3.6m x 6.5m (20.3m ² , 218.3ft ²)	
Bedroom 2 2.5m x 5.3m (13.0m ² , 139.6ft ²)	
ENERGY EFFICIENCY RATING	78C
ENVIRONMENTAL IMPACT (CO ₂)	79C

APARTMENT 5	
Total Area (101.9m ² , 1096.9ft ²)	
Living, dining, kitchen 5.1m x 10.1m (44.7m ² , 480.9ft ²)	
Bedroom 1 5.1m x 4.0m (19.9m ² , 214.6ft ²)	
Bedroom 2 2.6m x 4.7m (10.4m ² , 111.5ft ²)	
ENERGY EFFICIENCY RATING	73C
ENVIRONMENTAL IMPACT (CO ₂)	75C

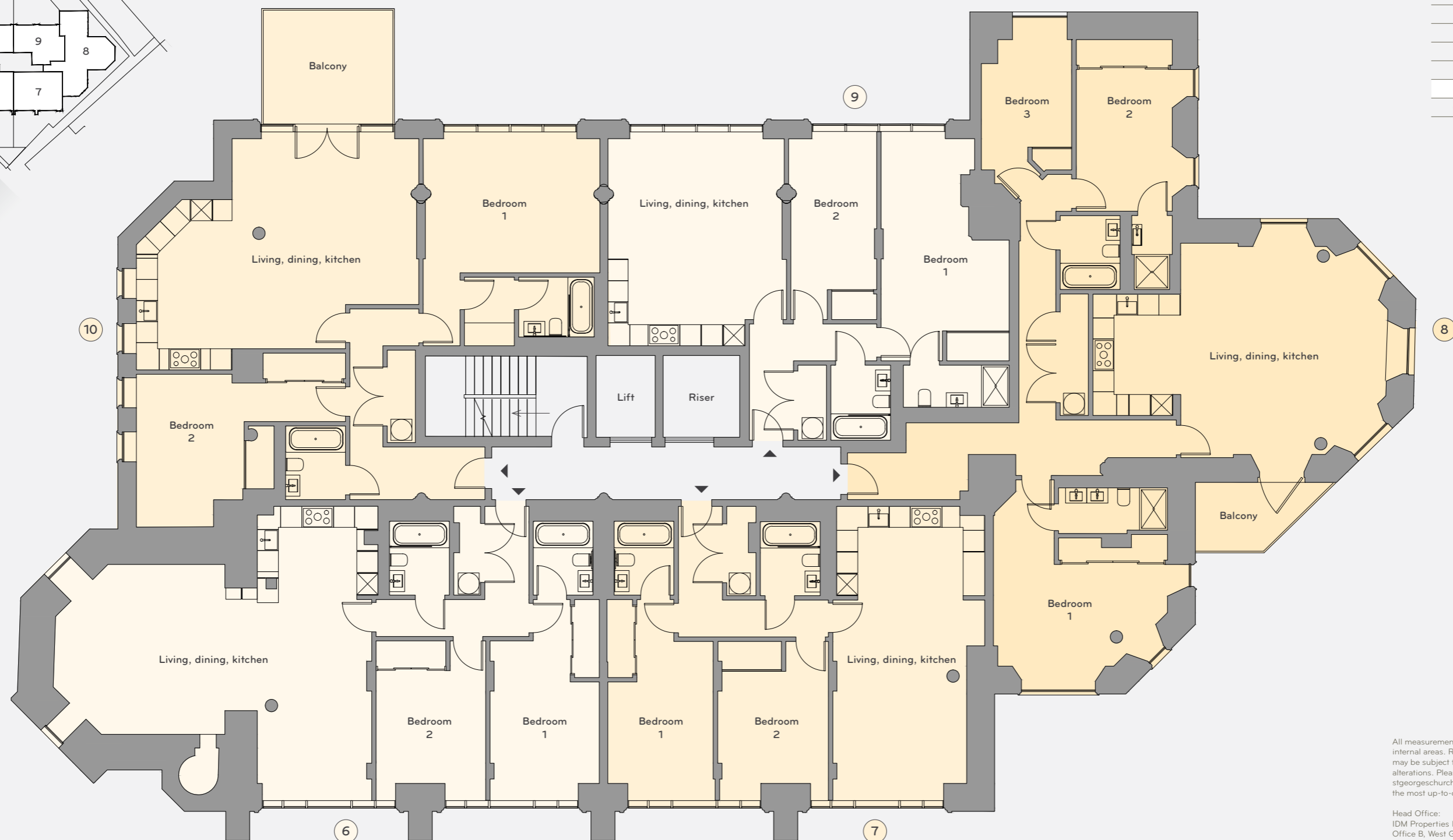
All measurements are gross internal areas. Room sizes may be subject to minor alterations. Please refer to stgeorgeschurch-TW8.com for the most up-to-date floor plans.

Head Office:
IDM Properties LLP
Office B, West Gainsborough,
1 Poole Street, London N1 5EA

+44 (0)20 7739 1650
mail@idmproperties.com
idmproperties.com



FLOOR 5
FLOOR 4
FLOOR 3
FLOOR 2
FLOOR 1
GROUND



All measurements are gross internal areas. Room sizes may be subject to minor alterations. Please refer to stgeorgeschurch-TW8.com for the most up-to-date floor plans.

Head Office:
IDM Properties LLP
Office B, West Gainsborough,
1 Poole Street, London N1 5EA

+44 (0)20 7739 1650
mail@idmproperties.com
idmproperties.com

APARTMENT 6

Total Area (104.6m², 1125.9ft²)

Living, dining, kitchen
9.0m x 8.4m (56.3m², 605.7ft²)

Bedroom 1
3.1m x 5.7m (16.0m², 172.2ft²)

Bedroom 2
3.1m x 4.5m (13.8m², 148.0ft²)

ENERGY EFFICIENCY RATING 82B
ENVIRONMENTAL IMPACT (CO₂) 84B

APARTMENT 7

Total Area (85.7m², 922.5ft²)

Living, dining, kitchen
4.3m x 8.4m (33.1m², 356.7ft²)

Bedroom 1
3.0m x 5.7m (15.7m², 168.7ft²)

Bedroom 2
3.1m x 4.5m (13.6m², 146.4ft²)

ENERGY EFFICIENCY RATING 84B
ENVIRONMENTAL IMPACT (CO₂) 85B

APARTMENT 8

Total Area (124.7m², 1342.3ft²)

Living, dining, kitchen
8.4m x 6.1m (42.4m², 456.1ft²)

Bedroom 1
4.9m x 5.3m (17.1m², 184.5ft²)

Bedroom 2
2.7m x 4.0m (13.3m², 143.6ft²)

Bedroom 3
2.6m x 3.1m (9.2m², 99.2ft²)

ENERGY EFFICIENCY RATING 77C
ENVIRONMENTAL IMPACT (CO₂) 79C

APARTMENT 9

Total Area (83.4m², 897.7ft²)

Living, dining, kitchen
5.0m x 6.1m (30.2m², 324.7ft²)

Bedroom 1
3.6m x 6.5m (20.2m², 217.8ft²)

Bedroom 2
2.5m x 5.3m (13.1m², 141.2ft²)

ENERGY EFFICIENCY RATING 81B
ENVIRONMENTAL IMPACT (CO₂) 83B

APARTMENT 10

Total Area (112.5m², 1211.0ft²)

Living, dining, kitchen
8.0m x 6.2m (42.3m², 455.0ft²)

Bedroom 1
5.0m x 4.0m (22.6m², 243.3ft²)

Bedroom 2
5.9m x 4.3m (15.7m², 169.2ft²)

ENERGY EFFICIENCY RATING 78C
ENVIRONMENTAL IMPACT (CO₂) 80C





FLOOR 5
FLOOR 4
FLOOR 3
FLOOR 2
FLOOR 1
GROUND



All measurements are gross internal areas. Room sizes may be subject to minor alterations. Please refer to stgeorgeschurch-TW8.com for the most up-to-date floor plans.

Head Office:
IDM Properties LLP
Office B, West Gainsborough,
1 Poole Street, London N1 5EA

+44 (0)20 7739 1650
mail@idmproperties.com
idmproperties.com

APARTMENT 11 Total Area (103.4m ² , 1113.0ft ²)	
Living, dining, kitchen 9.0m x 8.1m (51.7m ² , 556.8ft ²)	
Bedroom 1 3.1m x 5.8m (16.2m ² , 174.1ft ²)	
Bedroom 2 3.1m x 4.6m (13.7m ² , 147.6ft ²)	
ENERGY EFFICIENCY RATING	82B
ENVIRONMENTAL IMPACT (CO ₂)	83B

APARTMENT 12 Total Area (84.1m ² , 905.3ft ²)	
Living, dining, kitchen 4.1m x 8.1m (31.9m ² , 343.6ft ²)	
Bedroom 1 3.0m x 5.8m (15.5m ² , 167.3ft ²)	
Bedroom 2 3.1m x 4.6m (13.7m ² , 147.4ft ²)	
ENERGY EFFICIENCY RATING	85B
ENVIRONMENTAL IMPACT (CO ₂)	80B

APARTMENT 13 Total Area (122.8m ² , 1321.9ft ²)	
Living, dining, kitchen 8.4m x 5.9m (42.1m ² , 453.0ft ²)	
Bedroom 1 5.2m x 5.8m (20.9m ² , 225.0ft ²)	
Bedroom 2 4.5m x 4.1m (19.1m ² , 205.6ft ²)	
ENERGY EFFICIENCY RATING	75C
ENVIRONMENTAL IMPACT (CO ₂)	77C

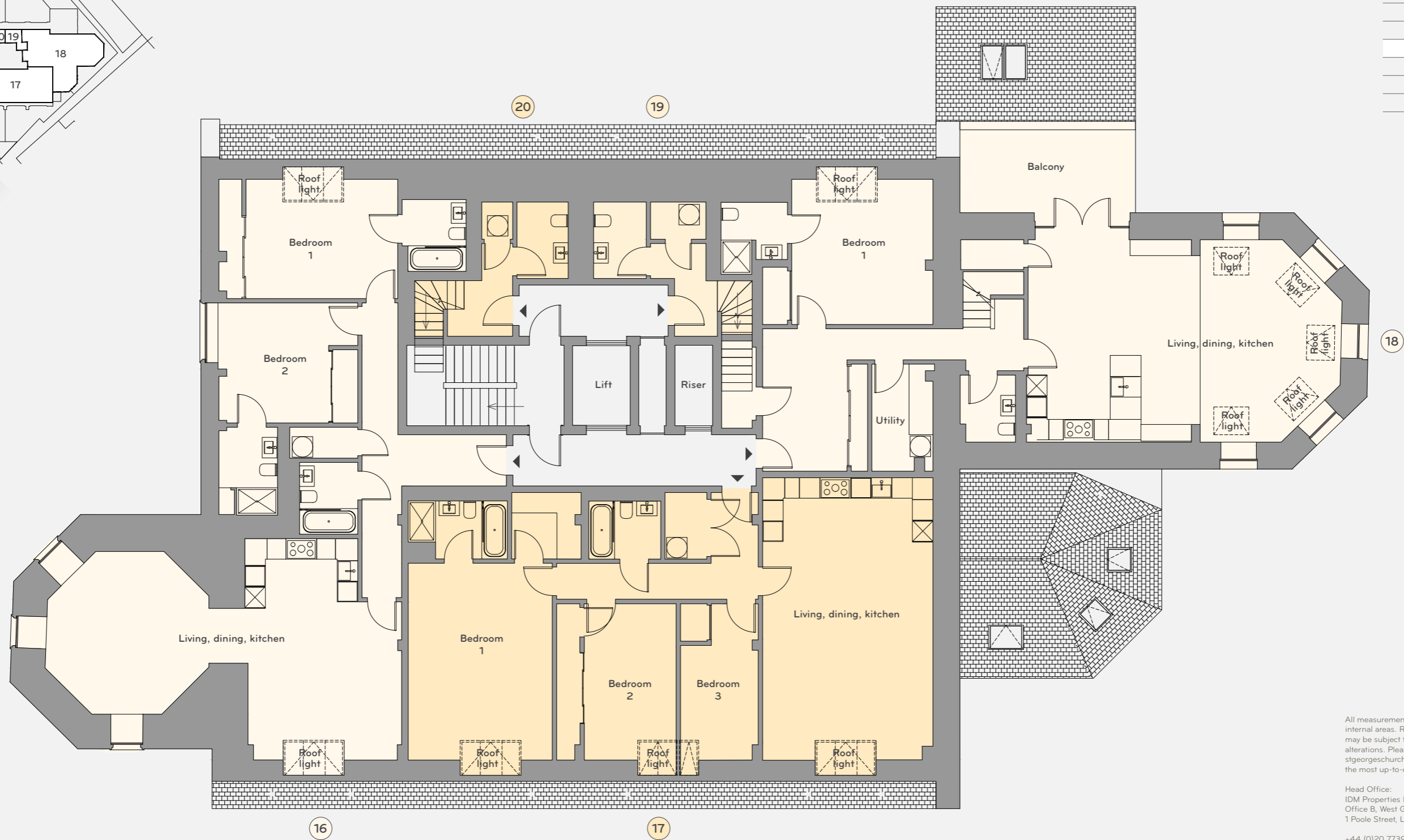
APARTMENT 14 Total Area (82.9m ² , 892.4ft ²)	
Living, dining, kitchen 5.1m x 6.1m (29.9m ² , 321.7ft ²)	
Bedroom 1 2.5m x 5.3m (13.1m ² , 140.5ft ²)	
Bedroom 2 3.6m x 6.5m (20.2m ² , 217.0ft ²)	
ENERGY EFFICIENCY RATING	80C
ENVIRONMENTAL IMPACT (CO ₂)	81B

APARTMENT 15 Total Area (88.7m ² , 954.8ft ²)	
Living, dining, kitchen 5.3m x 7.1m (32.7m ² , 351.8ft ²)	
Bedroom 1 4.4m x 3.8m (17.7m ² , 191.0ft ²)	
Bedroom 2 4.2m x 3.5m (13.5m ² , 145.4ft ²)	
ENERGY EFFICIENCY RATING	79C
ENVIRONMENTAL IMPACT (CO ₂)	80C





FLOOR 5
FLOOR 4
FLOOR 3
FLOOR 2
FLOOR 1
GROUND



All measurements are gross internal areas. Room sizes may be subject to minor alterations. Please refer to stgeorgeschurch-TW8.com for the most up-to-date floor plans.

Head Office:
IDM Properties LLP
Office B, West Gainsborough,
1 Poole Street, London N1 5EA

+44 (0)20 7739 1650
mail@idmproperties.com
idmproperties.com

APARTMENT 16

Total Area (113.9m², 1226.0ft²)

Living, dining, kitchen
10.4m x 6.5m (47.1m², 507.0ft²)

Bedroom 1
4.4m x 3.5m (15.5m², 166.6ft²)

Bedroom 2
4.1m x 3.5m (12.3m², 132.6ft²)

ENERGY EFFICIENCY RATING 79C
ENVIRONMENTAL IMPACT (CO₂) 80C

APARTMENT 17

Total Area (112.1m², 1206.7ft²)

Living, dining, kitchen
5.0m x 8.3m (41.0m², 440.9ft²)

Bedroom 1
4.2m x 5.8m (24.2m², 260.9ft²)

Bedroom 2
2.7m x 4.6m (15.8m², 169.5ft²)

Bedroom 3
2.3m x 4.6m (10.2m², 109.4ft²)

ENERGY EFFICIENCY RATING 73C
ENVIRONMENTAL IMPACT (CO₂) 75C

APARTMENT 18 (DUPLEX)

Total Area (137.5m², 1480.1ft²)

Living, dining, kitchen
9.2m x 5.9m (53.6m², 577.3ft²)

Bedroom 1
4.1m x 4.2m (17.4m², 187.1ft²)

Bedroom 2
3.8m x 3.3m (12.3m², 131.9ft²)

ENERGY EFFICIENCY RATING 76C
ENVIRONMENTAL IMPACT (CO₂) 78C

APARTMENT 19 (TRIPLEX)

Total Area (116.8m², 1257.3ft²)

Living, dining, kitchen
4.9m x 6.2m (30.8m², 331.1ft²)

Bedroom 1
4.4m x 3.3m (14.4m², 154.9ft²)

Bedroom 2
4.4m x 3.5m (15.2m², 163.4ft²)

Bedroom 3
3.2m x 3.1m (8.6m², 92.2ft²)

ENERGY EFFICIENCY RATING 78C
ENVIRONMENTAL IMPACT (CO₂) 79C

APARTMENT 20 (TRIPLEX)

Total Area (168.6m², 1814.9ft²)

Living, dining, kitchen
11.7m x 4.6m (47.6m², 512.4ft²)

Bedroom 1
3.4m x 4.9m (16.4m², 176.3ft²)

Bedroom 2
3.7m x 3.9m (16.2m², 174.7ft²)

Bedroom 3
4.6m x 2.6m (11.8m², 126.5ft²)

Study
4.8m x 4.8m (19.0m², 204.1ft²)

ENERGY EFFICIENCY RATING 79C
ENVIRONMENTAL IMPACT (CO₂) 80C





FLOOR 5
FLOOR 4
FLOOR 3
FLOOR 2
FLOOR 1
GROUND



All measurements are gross internal areas. Room sizes may be subject to minor alterations. Please refer to stgeorgeschurch-TW8.com for the most up-to-date floor plans.

Head Office:
IDM Properties LLP
Office B, West Gainsborough,
1 Poole Street, London N1 5EA

+44 (0)20 7739 1650
mail@idmproperties.com
idmproperties.com

APARTMENT 18 (DUPLEX)

Total Area (137.5m², 1480.1ft²)

Living, dining, kitchen

9.2m x 5.9m (53.6m², 577.3ft²)

Bedroom 1

4.1m x 4.2m (17.4m², 187.1ft²)

Bedroom 2

3.8m x 3.3m (12.3m², 131.9ft²)

ENERGY EFFICIENCY RATING 76C
ENVIRONMENTAL IMPACT (CO₂) 78C

APARTMENT 19 (TRIPLEX)

Total Area (116.8m², 1257.3ft²)

Living, dining, kitchen

4.9m x 6.2m (30.8m², 331.1ft²)

Bedroom 1

4.4m x 3.3m (14.4m², 154.9ft²)

Bedroom 2

4.4m x 3.5m (15.2m², 163.4ft²)

Bedroom 3

3.2m x 3.1m (8.6m², 92.2ft²)

ENERGY EFFICIENCY RATING 78C
ENVIRONMENTAL IMPACT (CO₂) 79C

APARTMENT 20 (TRIPLEX)

Total Area (168.6m², 1814.9ft²)

Living, dining, kitchen

11.7m x 4.6m (47.6m², 512.4ft²)

Bedroom 1

3.4m x 4.9m (16.4m², 176.3ft²)

Bedroom 2

3.7m x 3.9m (16.2m², 174.7ft²)

Bedroom 3

4.6m x 2.6m (11.8m², 126.5ft²)

Study

4.8m x 4.8m (19.0m², 204.1ft²)

ENERGY EFFICIENCY RATING 76C
ENVIRONMENTAL IMPACT (CO₂) 78C



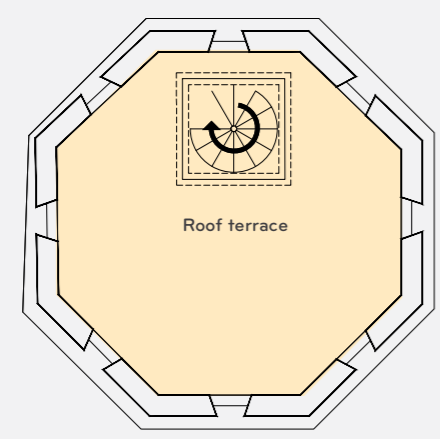
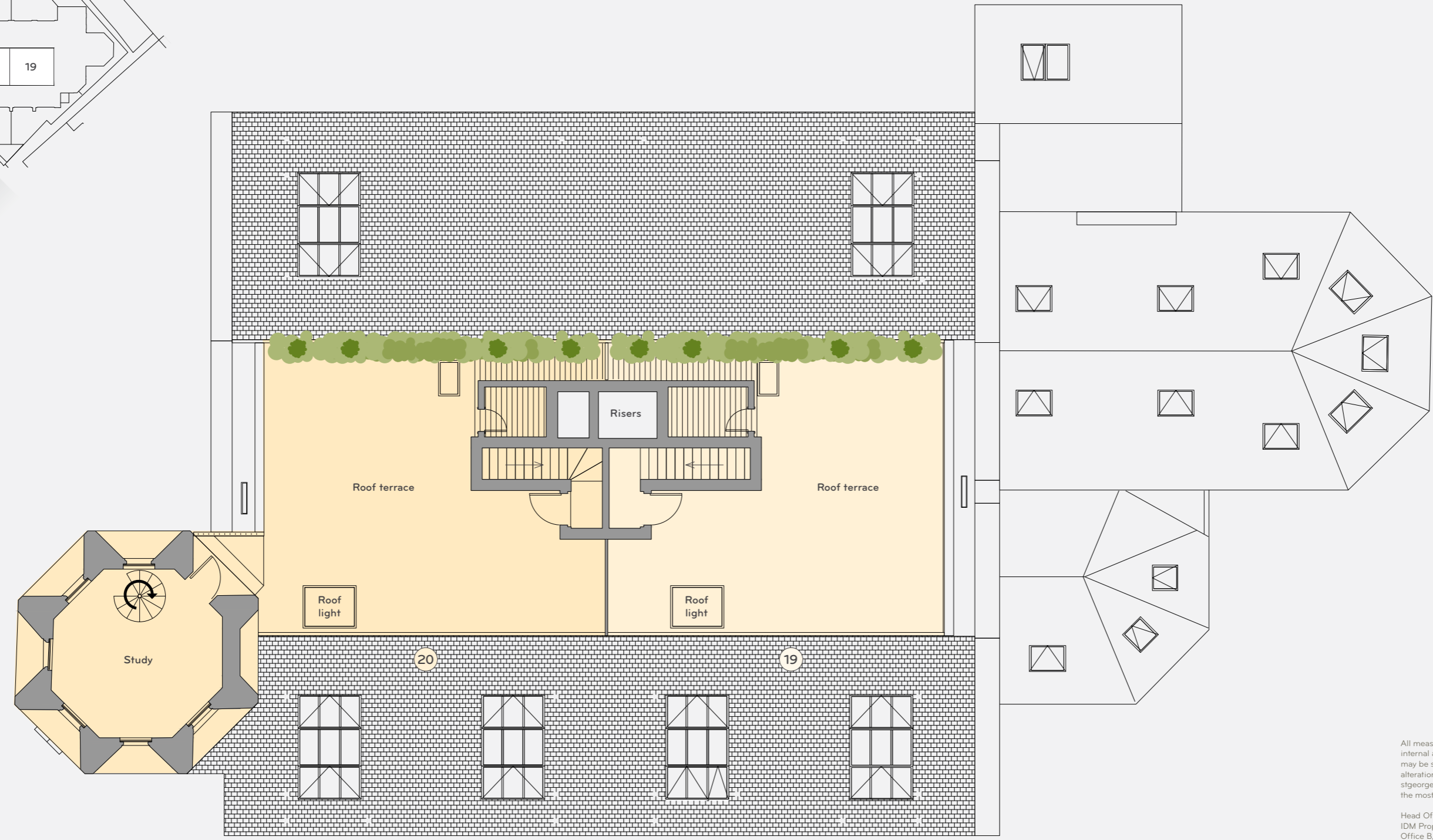


FLOOR 5
FLOOR 4
FLOOR 3
FLOOR 2
FLOOR 1
GROUND

All measurements are gross internal areas. Room sizes may be subject to minor alterations. Please refer to stgeorgeschurch-TW8.com for the most up-to-date floor plans.

Head Office:
IDM Properties LLP
Office B, West Gainsborough,
1 Poole Street, London N1 5EA

+44 (0)20 7739 1650
mail@idmproperties.com
idmproperties.com



Tower roof terrace to apartment 20

