



St Georges | Floorplans



APARTMENT 1	
Total Area (110.6m ² , 1190.5ft ²)	
Living, dining, kitchen 6.1m x 8.4m (38.9m ² , 418.4ft ²)	
Bedroom 1 3.1m x 5.7m (16.3m ² , 175.1ft ²)	
Bedroom 2 3.4m x 3.9m (16.1m ² , 173.3ft ²)	
Bedroom 3 2.4m x 4.5m (10.4m ² , 111.8ft ²)	
ENERGY EFFICIENCY RATING* 79C ENVIRONMENTAL IMPACT (CO ₂)* 80C	

APARTMENT 2	
Total Area (87.9m ² , 946.2ft ²)	
Living, dining, kitchen 5.0m x 8.4m (39.2m ² , 421.9ft ²)	
Bedroom 1 3.0m x 5.7m (15.9m ² , 171.5ft ²)	
Bedroom 2 2.5m x 4.5m (10.5m ² , 112.5ft ²)	
ENERGY EFFICIENCY RATING* 80C ENVIRONMENTAL IMPACT (CO ₂)* 82B	

APARTMENT 3	
Total Area (123.4m ² , 1328.3ft ²)	
Living, dining, kitchen 8.3m x 5.8m (41.6m ² , 447.8ft ²)	
Bedroom 1 4.9m x 5.2m (18.8m ² , 201.9ft ²)	
Bedroom 2 3.2m x 4.0m (13.1m ² , 140.9ft ²)	
Bedroom 3 2.5m x 4.8m (9.0m ² , 96.9ft ²)	
ENERGY EFFICIENCY RATING* 74C ENVIRONMENTAL IMPACT (CO ₂)* 76C	

APARTMENT 4	
Total Area (83.1m ² , 894.5ft ²)	
Living, dining, kitchen 5.1m x 6.1m (29.6m ² , 318.1ft ²)	
Bedroom 1 3.6m x 6.5m (20.3m ² , 218.3ft ²)	
Bedroom 2 2.5m x 5.3m (13.0m ² , 139.6ft ²)	
ENERGY EFFICIENCY RATING* 78C ENVIRONMENTAL IMPACT (CO ₂)* 79C	

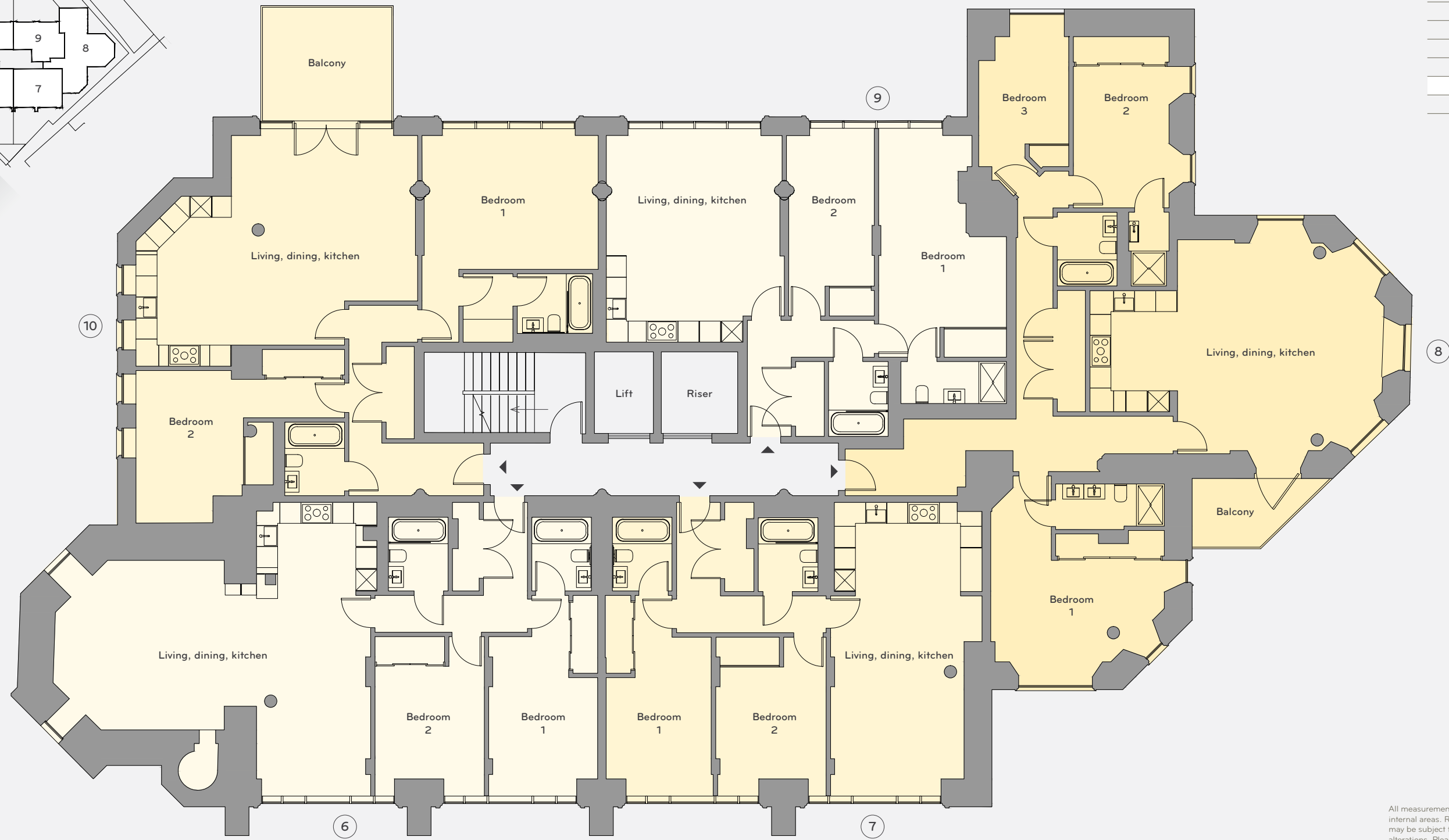
APARTMENT 5	
Total Area (101.9m ² , 1096.9ft ²)	
Living, dining, kitchen 5.1m x 10.1m (44.7m ² , 480.9ft ²)	
Bedroom 1 5.1m x 4.0m (19.9m ² , 214.6ft ²)	
Bedroom 2 2.6m x 4.7m (10.4m ² , 111.5ft ²)	
ENERGY EFFICIENCY RATING* 73C ENVIRONMENTAL IMPACT (CO ₂)* 75C	

All measurements are gross internal areas. Room sizes may be subject to minor alterations. Please refer to stgeorgeschurch-TWS.com for the most up-to-date floor plans.

*Predicted Energy Assessment



FLOOR 5
FLOOR 4
FLOOR 3
FLOOR 2
FLOOR 1
GROUND



All measurements are gross internal areas. Room sizes may be subject to minor alterations. Please refer to stgeorgeschurch-TW8.com for the most up-to-date floor plans.

*Predicted Energy Assessment

APARTMENT 6 Total Area (104.6m ² , 1125.9ft ²)	
Living, dining, kitchen 9.0m x 8.4m (56.3m ² , 605.7ft ²)	
Bedroom 1 3.1m x 5.7m (16.0m ² , 172.2ft ²)	
Bedroom 2 3.1m x 4.5m (13.8m ² , 148.0ft ²)	
ENERGY EFFICIENCY RATING*	82B
ENVIRONMENTAL IMPACT (CO ₂)*	84B

APARTMENT 7 Total Area (85.7m ² , 922.5ft ²)	
Living, dining, kitchen 4.3m x 8.4m (33.1m ² , 356.7ft ²)	
Bedroom 1 3.0m x 5.7m (15.7m ² , 168.7ft ²)	
Bedroom 2 3.1m x 4.5m (13.6m ² , 146.4ft ²)	
ENERGY EFFICIENCY RATING*	84B
ENVIRONMENTAL IMPACT (CO ₂)*	85B

APARTMENT 8 Total Area (124.7m ² , 1342.3ft ²)	
Living, dining, kitchen 8.4m x 6.1m (42.4m ² , 456.1ft ²)	
Bedroom 1 4.9m x 5.3m (17.1m ² , 184.5ft ²)	
Bedroom 2 2.7m x 4.0m (13.3m ² , 143.6ft ²)	
Bedroom 3 2.6m x 3.1m (9.2m ² , 99.2ft ²)	
ENERGY EFFICIENCY RATING*	77C
ENVIRONMENTAL IMPACT (CO ₂)*	79C

APARTMENT 9 Total Area (83.4m ² , 897.7ft ²)	
Living, dining, kitchen 5.0m x 6.1m (30.2m ² , 324.7ft ²)	
Bedroom 1 3.6m x 6.5m (20.2m ² , 217.8ft ²)	
Bedroom 2 2.5m x 5.3m (13.1m ² , 141.2ft ²)	
ENERGY EFFICIENCY RATING*	81B
ENVIRONMENTAL IMPACT (CO ₂)*	83B

APARTMENT 10 Total Area (112.5m ² , 1211.0ft ²)	
Living, dining, kitchen 8.0m x 6.2m (42.3m ² , 455.0ft ²)	
Bedroom 1 5.0m x 4.0m (22.6m ² , 243.3ft ²)	
Bedroom 2 5.9m x 4.3m (15.7m ² , 169.2ft ²)	
ENERGY EFFICIENCY RATING*	78C
ENVIRONMENTAL IMPACT (CO ₂)*	80C





FLOOR 5
FLOOR 4
FLOOR 3
FLOOR 2
FLOOR 1
GROUND



All measurements are gross internal areas. Room sizes may be subject to minor alterations. Please refer to stgeorgeschurch-TW8.com for the most up-to-date floor plans.

* Predicted Energy Assessment

APARTMENT 11

Total Area (103.4m², 1113.0ft²)

Living, dining, kitchen
9.0m x 8.1m (51.7m², 556.8ft²)

Bedroom 1
3.1m x 5.8m (16.2m², 174.1ft²)

Bedroom 2
3.1m x 4.6m (13.7m², 147.6ft²)

ENERGY EFFICIENCY RATING* 82B
ENVIRONMENTAL IMPACT (CO₂)* 83B

APARTMENT 12

Total Area (84.1m², 905.3ft²)

Living, dining, kitchen
4.1m x 8.1m (31.9m², 343.6ft²)

Bedroom 1
3.0m x 5.8m (15.5m², 167.3ft²)

Bedroom 2
3.1m x 4.6m (13.7m², 147.4ft²)

ENERGY EFFICIENCY RATING* 85B
ENVIRONMENTAL IMPACT (CO₂)* 86B

APARTMENT 13

Total Area (122.8m², 1321.9ft²)

Living, dining, kitchen
8.4m x 5.9m (42.1m², 453.0ft²)

Bedroom 1
5.2m x 5.8m (20.9m², 225.0ft²)

Bedroom 2
4.5m x 4.1m (19.1m², 205.6ft²)

ENERGY EFFICIENCY RATING* 75C
ENVIRONMENTAL IMPACT (CO₂)* 77C

APARTMENT 14

Total Area (82.9m², 892.4ft²)

Living, dining, kitchen
5.1m x 6.1m (29.9m², 321.7ft²)

Bedroom 1
3.6m x 6.5m (20.2m², 217.0ft²)

Bedroom 2
2.5m x 5.3m (13.1m², 140.5ft²)

ENERGY EFFICIENCY RATING* 80C
ENVIRONMENTAL IMPACT (CO₂)* 81B

APARTMENT 15

Total Area (88.7m², 954.8ft²)

Living, dining, kitchen
5.3m x 7.1m (32.7m², 351.8ft²)

Bedroom 1
4.4m x 3.8m (17.7m², 191.0ft²)

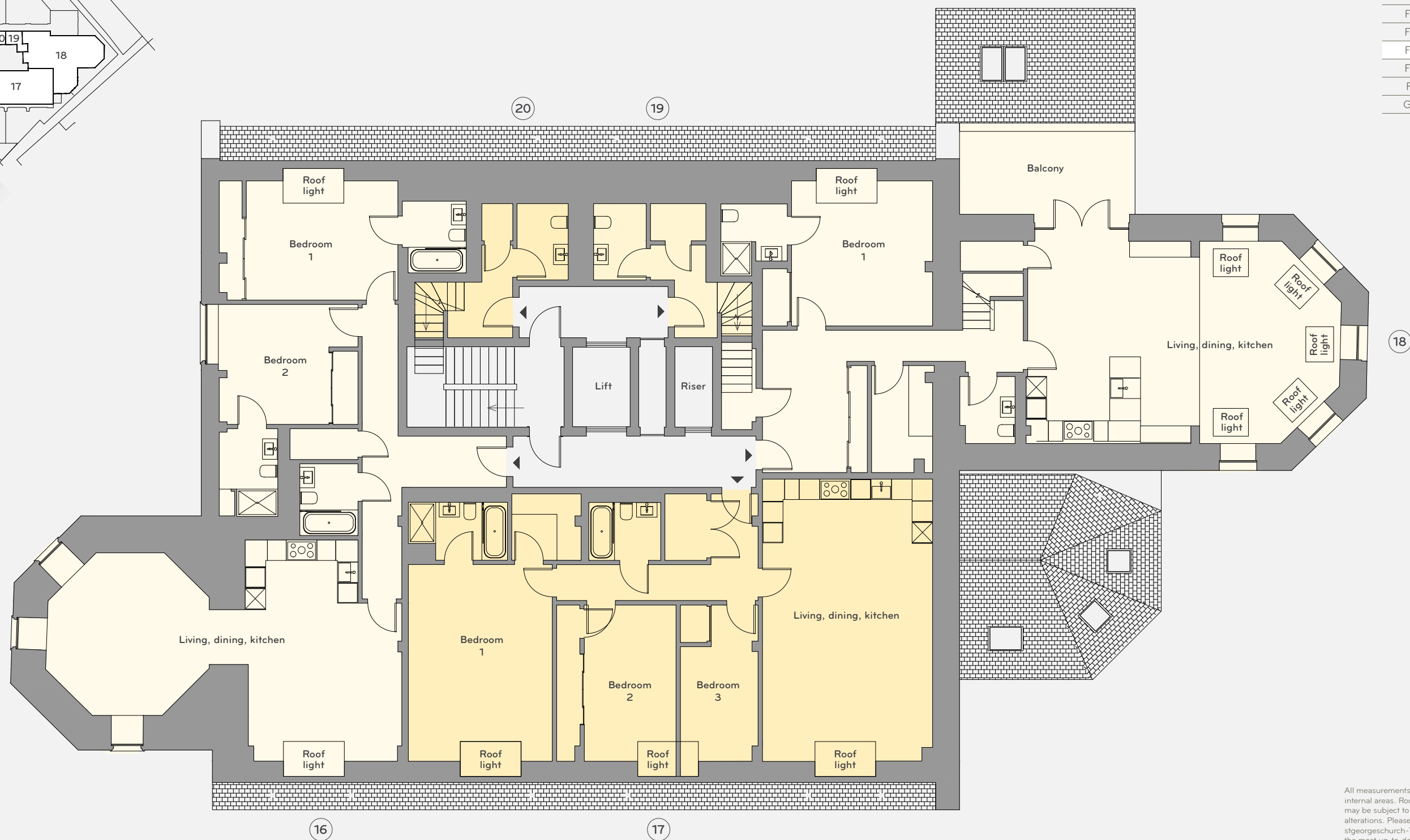
Bedroom 2
4.2m x 3.5m (13.5m², 145.4ft²)

ENERGY EFFICIENCY RATING* 75C
ENVIRONMENTAL IMPACT (CO₂)* 77C





FLOOR 5
FLOOR 4
FLOOR 3
FLOOR 2
FLOOR 1
GROUND



All measurements are gross internal areas. Room sizes may be subject to minor alterations. Please refer to stgeorgeschurch-TW8.com for the most up-to-date floor plans.

*Predicted Energy Assessment

APARTMENT 16	
Total Area (113.9m ² , 1226.0ft ²)	
Living, dining, kitchen 10.4m x 6.5m (47.1m ² , 507.0ft ²)	
Bedroom 1 4.4m x 3.5m (15.5m ² , 166.6ft ²)	
Bedroom 2 4.1m x 3.5m (12.3m ² , 132.6ft ²)	
ENERGY EFFICIENCY RATING*	79C
ENVIRONMENTAL IMPACT (CO ₂)*	80C

APARTMENT 17	
Total Area (112.1m ² , 1206.7ft ²)	
Living, dining, kitchen 5.0m x 8.3m (41.0m ² , 440.9ft ²)	
Bedroom 1 4.2m x 5.8m (24.2m ² , 260.9ft ²)	
Bedroom 2 2.7m x 4.6m (15.8m ² , 169.5ft ²)	
Bedroom 3 2.3m x 4.6m (10.2m ² , 109.4ft ²)	
ENERGY EFFICIENCY RATING*	73C
ENVIRONMENTAL IMPACT (CO ₂)*	75C

APARTMENT 18 (DUPLEX)	
Total Area (137.5m ² , 1480.1ft ²)	
Living, dining, kitchen 9.2m x 5.9m (53.6m ² , 577.3ft ²)	
Bedroom 1 4.1m x 4.2m (17.4m ² , 187.1ft ²)	
Bedroom 2 3.8m x 3.3m (12.3m ² , 131.9ft ²)	
ENERGY EFFICIENCY RATING*	76C
ENVIRONMENTAL IMPACT (CO ₂)*	78C

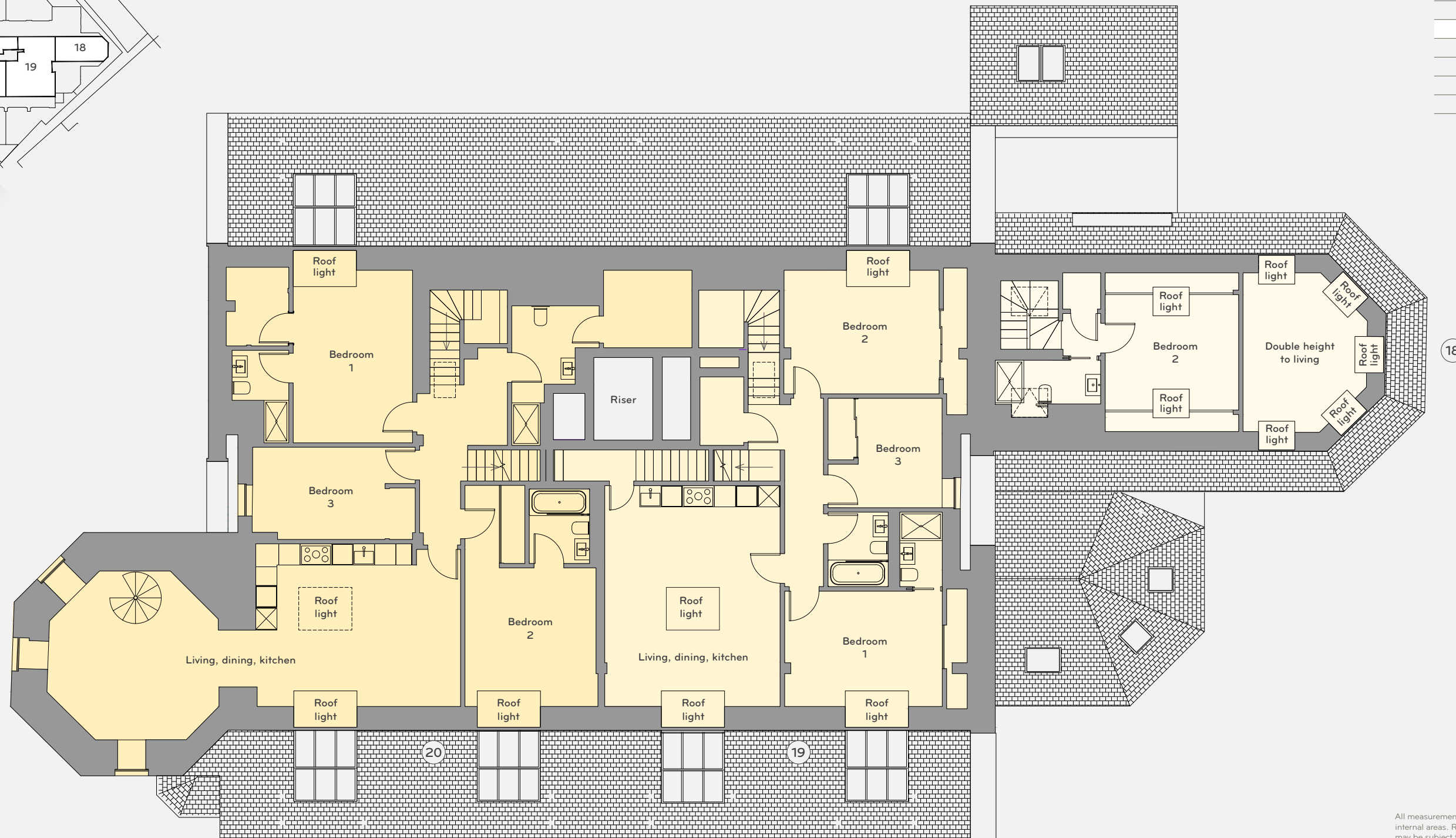
APARTMENT 19 (DUPLEX)	
Total Area (116.8m ² , 1257.3ft ²)	
Living, dining, kitchen 4.9m x 6.2m (30.8m ² , 331.1ft ²)	
Bedroom 1 4.4m x 3.3m (14.4m ² , 154.9ft ²)	
Bedroom 2 4.4m x 3.5m (15.2m ² , 163.4ft ²)	
Bedroom 3 3.2m x 3.1m (8.6m ² , 92.2ft ²)	
ENERGY EFFICIENCY RATING*	78C
ENVIRONMENTAL IMPACT (CO ₂)*	79C

APARTMENT 20 (TRIPLEX)	
Total Area (168.6m ² , 1814.9ft ²)	
Living, dining, kitchen 11.7m x 4.6m (47.6m ² , 512.4ft ²)	
Bedroom 1 3.4m x 4.9m (16.4m ² , 176.3ft ²)	
Bedroom 2 3.7m x 3.9m (16.2m ² , 174.7ft ²)	
Bedroom 3 4.6m x 2.6m (11.8m ² , 126.5ft ²)	
Study (5th floor) 4.8m x 4.8m (19.0m ² , 204.1ft ²)	
ENERGY EFFICIENCY RATING*	79C
ENVIRONMENTAL IMPACT (CO ₂)*	80C





FLOOR 5
FLOOR 4
FLOOR 3
FLOOR 2
FLOOR 1
GROUND



All measurements are gross internal areas. Room sizes may be subject to minor alterations. Please refer to stgeorgeschurch-TW8.com for the most up-to-date floor plans.

* Predicted Energy Assessment

APARTMENT 18 (DUPLEX)

Total Area (137.5m², 1480.1ft²)

Living, dining, kitchen
9.2m x 5.9m (53.6m², 577.3ft²)

Bedroom 1
4.1m x 4.2m (17.4m², 187.1ft²)

Bedroom 2
3.8m x 3.3m (12.3m², 131.9ft²)

ENERGY EFFICIENCY RATING* 76C
ENVIRONMENTAL IMPACT (CO₂)* 78C

APARTMENT 19 (DUPLEX)

Total Area (116.8m², 1257.3ft²)

Living, dining, kitchen
4.9m x 6.2m (30.8m², 331.1ft²)

Bedroom 1
4.4m x 3.3m (14.4m², 154.9ft²)

Bedroom 2
4.4m x 3.5m (15.2m², 163.4ft²)

Bedroom 3
3.2m x 3.1m (8.6m², 92.2ft²)

ENERGY EFFICIENCY RATING* 78C
ENVIRONMENTAL IMPACT (CO₂)* 79C

APARTMENT 20 (TRIPLEX)

Total Area (168.6m², 1814.9ft²)

Living, dining, kitchen
11.7m x 4.6m (47.6m², 512.4ft²)

Bedroom 1
3.4m x 4.9m (16.4m², 176.3ft²)

Bedroom 2
3.7m x 3.9m (16.2m², 174.7ft²)

Bedroom 3
4.6m x 2.6m (11.8m², 126.5ft²)

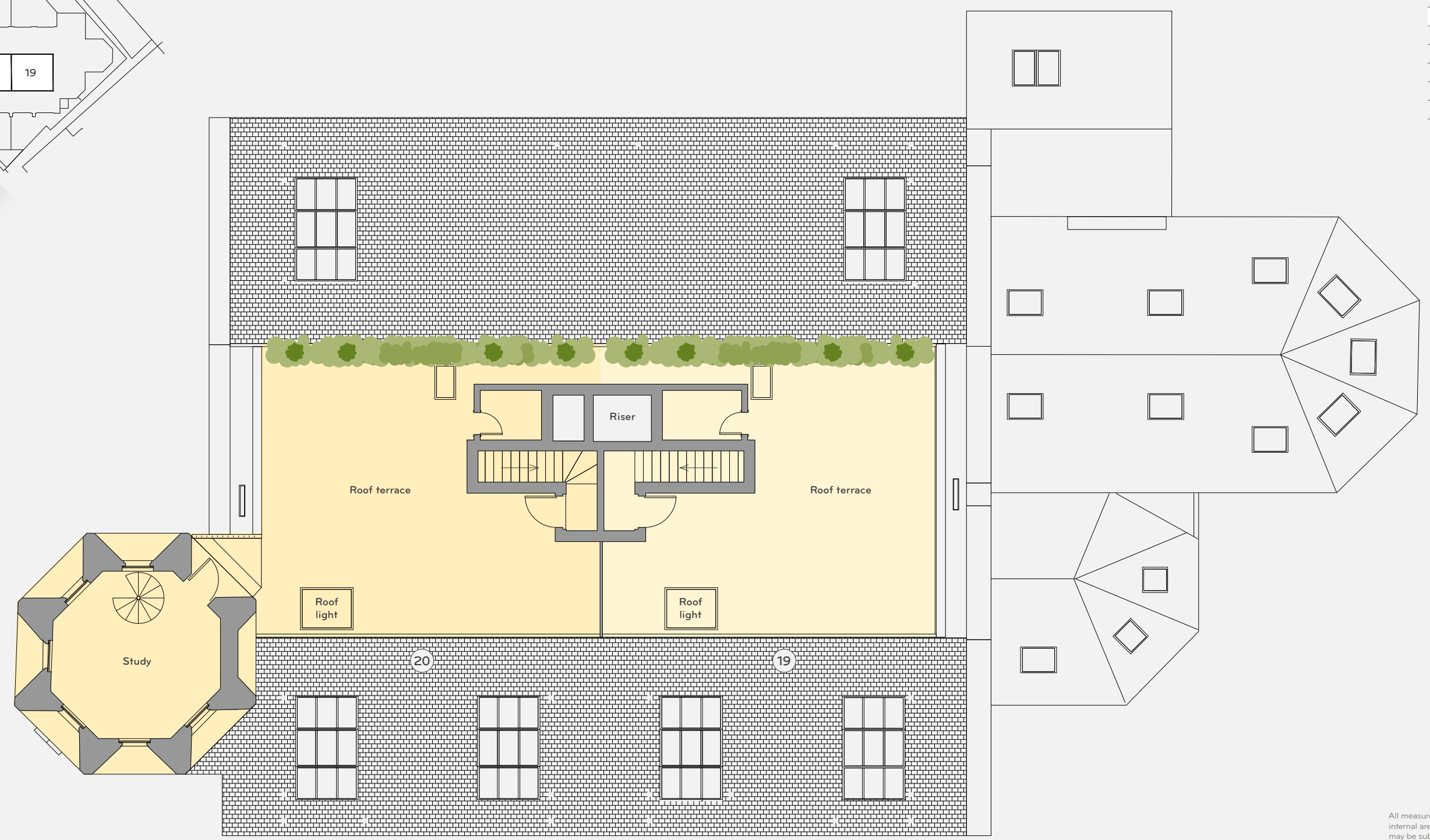
Study (5th floor)
4.8m x 4.8m (19.0m², 204.1ft²)

ENERGY EFFICIENCY RATING* 76C
ENVIRONMENTAL IMPACT (CO₂)* 78C





FLOOR 5
FLOOR 4
FLOOR 3
FLOOR 2
FLOOR 1
GROUND



All measurements are gross internal areas. Room sizes may be subject to minor alterations. Please refer to stgeorgeschurch-TW8.com for the most up-to-date floor plans.

*Peditced Energy Assessment

