

MAIN ENTRANCE →



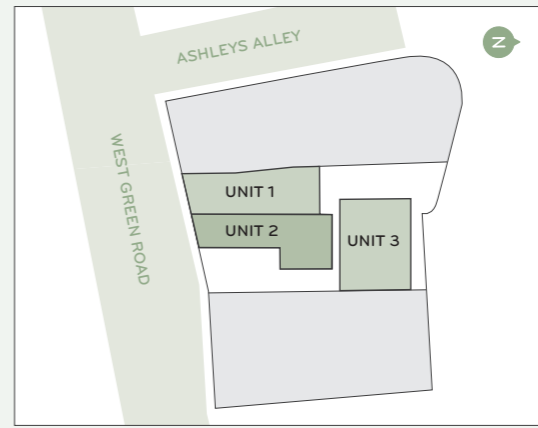
COMMERCIAL UNIT 1 Total Area (98m ² , 1055ft ²)
COMMERCIAL UNIT 2 Total Area (102m ² , 1098ft ²)
COMMERCIAL UNIT 3 Total Area (107m ² , 1152ft ²)

All measurements are gross internal areas. Room sizes may be subject to minor alterations. Please refer to kanehouse-N15.com for the most up-to-date floor plans.

Head Office:
IDM Properties LLP,
Office B, West Gainsborough,
1 Poole Street, London N1 5EA

+44 (0)20 7739 1650
mail@idmproperties.com
idmproperties.com

FLOOR
3rd
2nd
1st
GROUND





APARTMENT 1	
Total Area (98.6m ² , 1061.0ft ²)	
Living, Dining, Kitchen	5.0m x 5.0m (29.0m ² , 312.0ft ²)
Bedroom 1	4.9m x 2.6m (12.0m ² , 129.0ft ²)
Bedroom 2	2.9 x 2.7 (9.5m ² , 102.0ft ²)
ENERGY EFFICIENCY RATING	77C
ENVIRONMENTAL IMPACT (CO ₂)	80C

APARTMENT 2	
Total Area (73.4m ² , 790.0ft ²)	
Living, Dining, Kitchen	5.5m x 4.4m (24.0m ² , 258.0ft ²)
Bedroom 1	3.2m x 3.1m (16.5m ² , 178.0ft ²)
Bedroom 2	4.5m x 2.4m (3.2m ² , 142.0ft ²)
ENERGY EFFICIENCY RATING	77C
ENVIRONMENTAL IMPACT (CO ₂)	80C

APARTMENT 3	
Total Area (67.4m ² , 725.0ft ²)	
Living, Dining, Kitchen	8.0m x 3.3m (26.0m ² , 280.0ft ²)
Bedroom 1	4.0m x 2.8m (14.8m ² , 159.0ft ²)
Bedroom 2	3.2m x 2.4m (10.2m ² , 110.0ft ²)
ENERGY EFFICIENCY RATING	77C
ENVIRONMENTAL IMPACT (CO ₂)	80C

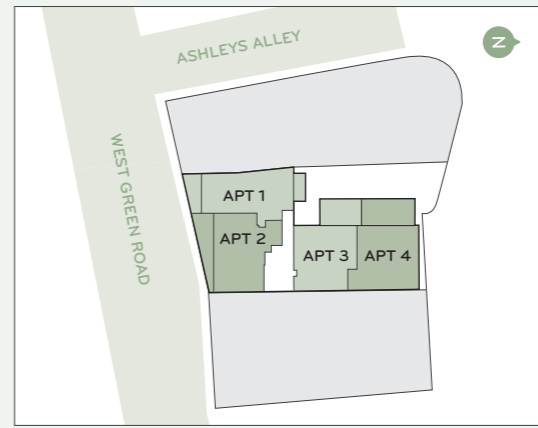
APARTMENT 4	
Total Area (69.0m ² , 742.0ft ²)	
Living, Dining, Kitchen	5.6m x 5.0m (28.0m ² , 301.0ft ²)
Bedroom 1	4.3m x 2.6m (12.1m ² , 130.0ft ²)
Bedroom 2	3.8m x 2.8m (12.7m ² , 137.0ft ²)
ENERGY EFFICIENCY RATING	77C
ENVIRONMENTAL IMPACT (CO ₂)	80C

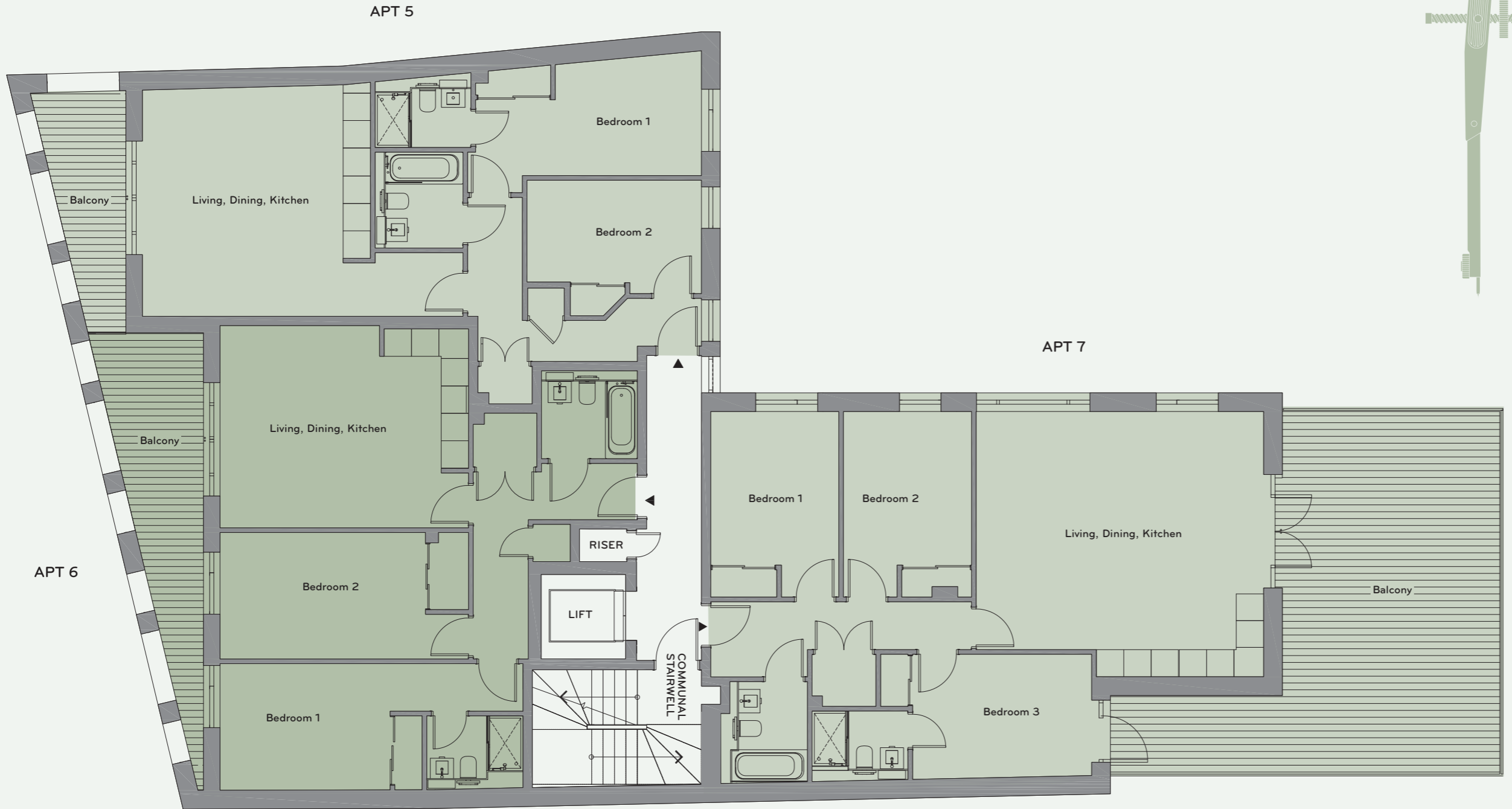
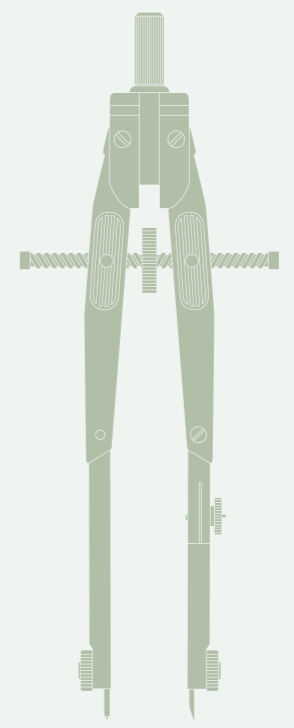
All measurements are gross internal areas. Room sizes may be subject to minor alterations. Please refer to kanehouse-N15.com for the most up-to-date floor plans.

Head Office:
IDM Properties LLP,
Office B, West Gainsborough,
1 Poole Street, London N1 5EA

+44 (0)20 7739 1650
mail@idmproperties.com
idmproperties.com

FLOOR
3rd
2nd
1st
GROUND





Second Floor | Kane House | Apartments 5 – 7

APARTMENT 5	
Total Area (70.0m ² , 753.0ft ²)	
Living, Dining, Kitchen	4.9m x 5.0m (28.2m ² , 304.0ft ²)
Bedroom 1	2.7m x 4.9m (12.8m ² , 138.0ft ²)
Bedroom 2	3.8m x 2.5m (9.7m ² , 104.0ft ²)
ENERGY EFFICIENCY RATING	77C
ENVIRONMENTAL IMPACT (CO ₂)	80C

APARTMENT 6	
Total Area (74.0m ² , 797.0ft ²)	
Living, Dining, Kitchen	5.4m x 4.4m (24.0m ² , 258.0ft ²)
Bedroom 1	2.7m x 3.7m (14.5m ² , 156.0ft ²)
Bedroom 2	2.8m x 4.5m (15.0m ² , 161.0ft ²)
ENERGY EFFICIENCY RATING	77C
ENVIRONMENTAL IMPACT (CO ₂)	80C

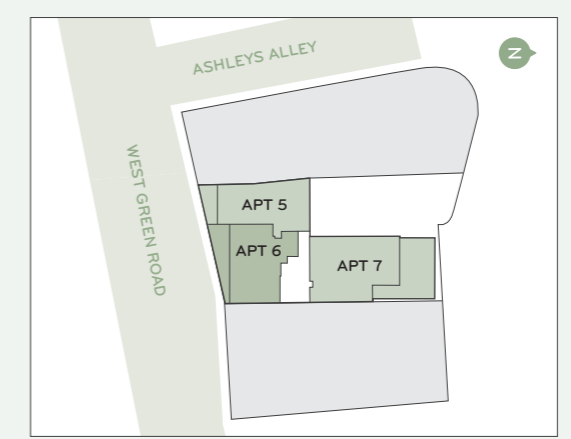
APARTMENT 7	
Total Area (89.0m ² , 958.0ft ²)	
Living, Dining, Kitchen	6.3m x 5.8m (35.4m ² , 381.0ft ²)
Bedroom 1	2.7m x 3.9m (11.6m ² , 125.0ft ²)
Bedroom 2	2.8m x 3.4m (11.4m ² , 123.0ft ²)
Bedroom 3	2.8m x 3.4m (11.3m ² , 122.0ft ²)
ENERGY EFFICIENCY RATING	77C
ENVIRONMENTAL IMPACT (CO ₂)	80C

All measurements are gross internal areas. Room sizes may be subject to minor alterations. Please refer to kanehouse-N15.com for the most up-to-date floor plans.

Head Office:
IDM Properties LLP,
Office B, West Gainsborough,
1 Poole Street, London N1 5EA

+44 (0)20 7739 1650
mail@idmproperties.com
idmproperties.com

FLOOR
3rd
2nd
1st
GROUND



N



APT 9

APT 8

APT 10

APARTMENT 8	
Total Area (61.6m ² , 663.0ft ²)	
Living, Dining, Kitchen	
5.3m x 5.5m (28.3m ² , 304.6ft ²)	
Bedroom (includes walk-in-wardrobe)	
4.6m x 2.9m (16.9m ² , 181.9ft ²)	
ENERGY EFFICIENCY RATING	87B
ENVIRONMENTAL IMPACT (CO ₂)	88B

APARTMENT 9	
Total Area (73.9m ² , 795.4ft ²)	
Living, Dining, Kitchen	
4.4m x 5.4m (24.0m ² , 258.3ft ²)	
Bedroom 1	
2.8m x 4.4m (14.5m ² , 156.0ft ²)	
Bedroom 2	
2.8m x 5.5m (15.0m ² , 161.4ft ²)	
ENERGY EFFICIENCY RATING	87B
ENVIRONMENTAL IMPACT (CO ₂)	88B

APARTMENT 10	
Total Area (89.0m ² , 958.0ft ²)	
Living, Dining, Kitchen	
35.0m ² , 377.0ft ² (6.3m x 5.8m)	
Bedroom 1	
11.4m ² , 123.0ft ² (3.9m x 2.7m)	
Bedroom 2	
11.4m ² , 123.0ft ² (3.4m x 2.8m)	
Bedroom 3	
11.2m ² , 121.0ft ² (3.3m x 2.8m)	
ENERGY EFFICIENCY RATING	88B
ENVIRONMENTAL IMPACT (CO ₂)	89B

All measurements are gross internal areas. Room sizes may be subject to minor alterations. Please refer to kanehouse-N15.com for the most up-to-date floor plans.

Head Office:
IDM Properties LLP,
Office B, West Gainsborough,
1 Poole Street, London N1 5EA

+44 (0)20 7739 1650
mail@idmproperties.com
idmproperties.com

FLOOR

- 3rd
- 2nd
- 1st
- GROUND

