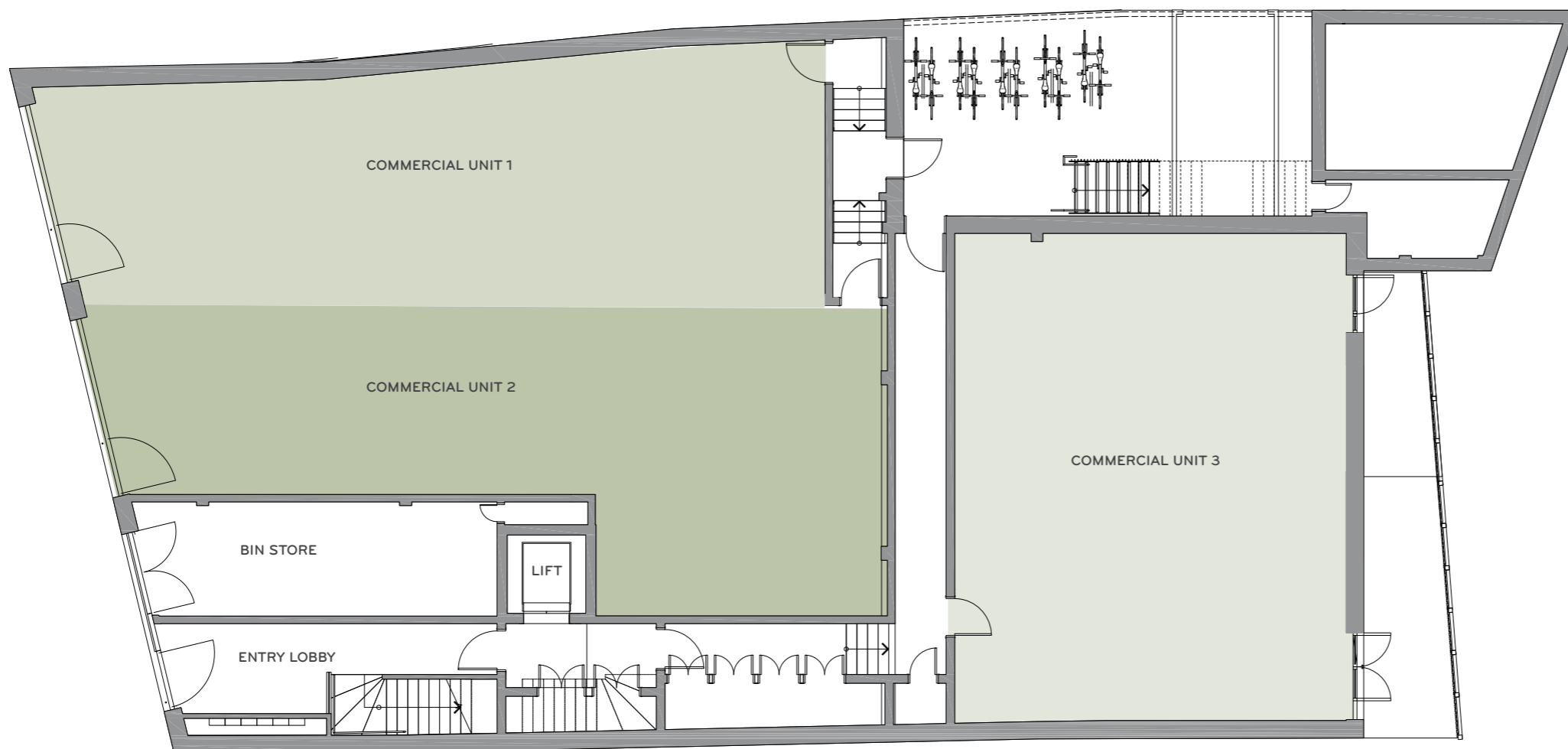


FLOOR
4th
3rd
2nd
1st
<b>GROUND</b>



<b>COMMERCIAL UNIT 1</b> Total Area (98m <sup>2</sup> , 1055ft <sup>2</sup> )
<b>COMMERCIAL UNIT 2</b> Total Area (102m <sup>2</sup> , 1098ft <sup>2</sup> )
<b>COMMERCIAL UNIT 3</b> Total Area (107m <sup>2</sup> , 1152ft <sup>2</sup> )

All measurements are gross internal areas. Room sizes may be subject to minor alterations. Please refer to [Roseberyhouse-KT17.com](http://Roseberyhouse-KT17.com) for the most up-to-date floor plans.

Head Office: IDM Properties LLP, Office B, West Gainsborough, 1 Poole Street, London N1 5EA

+44 (0)20 7739 1650  
[mail@idmproperties.com](mailto:mail@idmproperties.com)  
[idmproperties.com](http://idmproperties.com)



FLOOR
4th
3rd
2nd
<b>1st</b>
GROUND



APARTMENT 13
Total Area (62.0m <sup>2</sup> , 667.5ft <sup>2</sup> )
Living, dining, kitchen 5.5m x 4.8m (26.2m <sup>2</sup> , 280.0ft <sup>2</sup> )
Bedroom 1 5.1m x 2.6m (13.3m <sup>2</sup> , 143.0ft <sup>2</sup> )
Bedroom 2 3.1m x 3.0m (9.1m <sup>2</sup> , 98.0ft <sup>2</sup> )

APARTMENT 14
Total Area (62.6m <sup>2</sup> , 674.0ft <sup>2</sup> )
Living, dining, kitchen 5.5m x 4.6m (25.2m <sup>2</sup> , 271.0ft <sup>2</sup> )
Bedroom 1 3.5m x 3.3m (11.7m <sup>2</sup> , 126.0ft <sup>2</sup> )
Bedroom 2 3.1m x 2.8m (8.7m <sup>2</sup> , 93.5ft <sup>2</sup> )

APARTMENT 1
Total Area (98.6m <sup>2</sup> , 1061.0ft <sup>2</sup> )
Living, dining, kitchen 5.0m x 5.0m (29.0m <sup>2</sup> , 312.0ft <sup>2</sup> )
Bedroom 1 4.9m x 2.6m (12.0m <sup>2</sup> , 129.0ft <sup>2</sup> )
Bedroom 2 2.9 x 2.7 (9.5m <sup>2</sup> , 102.0ft <sup>2</sup> )

APARTMENT 2
Total Area (73.4m <sup>2</sup> , 790.0ft <sup>2</sup> )
Living, dining, kitchen 5.5m x 4.4m (24.0m <sup>2</sup> , 258.0ft <sup>2</sup> )
Bedroom 1 3.2m x 3.1m (16.5m <sup>2</sup> , 178.0ft <sup>2</sup> )
Bedroom 2 4.5m x 2.4m (3.2m <sup>2</sup> , 142.0ft <sup>2</sup> )

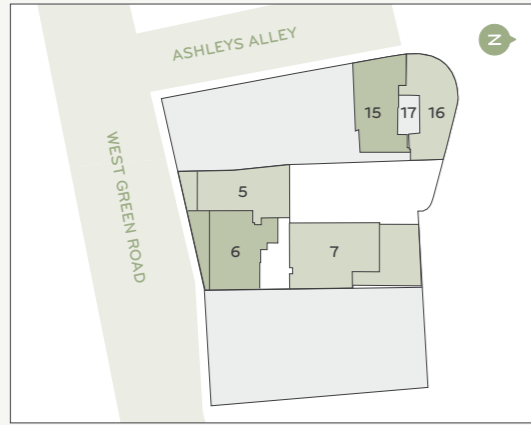
APARTMENT 3
Total Area (67.4m <sup>2</sup> , 725.0ft <sup>2</sup> )
Living, dining, kitchen 8.0m x 3.3m (26.0m <sup>2</sup> , 280.0ft <sup>2</sup> )
Bedroom 1 4.0m x 2.8m (14.8m <sup>2</sup> , 159.0ft <sup>2</sup> )
Bedroom 2 3.2m x 2.4m (10.2m <sup>2</sup> , 110.0ft <sup>2</sup> )

APARTMENT 4
Total Area (69.0m <sup>2</sup> , 742.0ft <sup>2</sup> )
Living, dining, kitchen 6.0m x 5.0m (28.0m <sup>2</sup> , 301.0ft <sup>2</sup> )
Bedroom 1 4.3m x 2.6m (12.1m <sup>2</sup> , 130.0ft <sup>2</sup> )
Bedroom 2 3.8m x 2.8m (12.7m <sup>2</sup> , 137.0ft <sup>2</sup> )

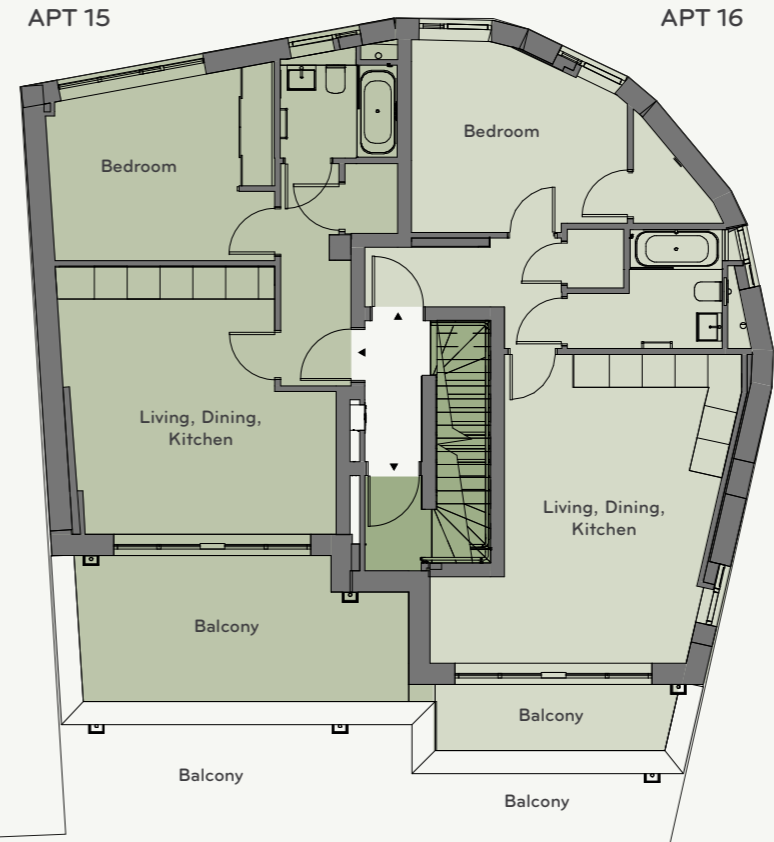
All measurements are gross internal areas. Room sizes may be subject to minor alterations. Please refer to Rosebery house-KT17.com for the most up-to-date floor plans.

Head Office: IDM Properties LLP, Office B, West Gainsborough, 1 Poole Street, London N1 5EA

+44 (0)20 7739 1650  
mail@idmproperties.com  
idmproperties.com



FLOOR
4th
3rd
<b>2nd</b>
1st
GROUND



**APARTMENT 15**  
Total Area (47.6m<sup>2</sup>, 512.0ft<sup>2</sup>)

Living, dining, kitchen  
4.8m x 4.4m (21.2m<sup>2</sup>, 228.0ft<sup>2</sup>)

Bedroom  
3.3m x 4.0m (13.3m<sup>2</sup>, 143.0ft<sup>2</sup>)

**APARTMENT 16**  
Total Area (53.0m<sup>2</sup>, 570.0ft<sup>2</sup>)

Living, dining, kitchen  
5.7m x 4.4m (24.3m<sup>2</sup>, 262.0ft<sup>2</sup>)

Bedroom  
3.7m x 3.3m (12.2m<sup>2</sup>, 131.0ft<sup>2</sup>)

**APARTMENT 17**  
Entrance



**APARTMENT 7**  
Total Area (89.0m<sup>2</sup>, 958.0ft<sup>2</sup>)

Living, dining, kitchen  
6.3m x 5.8m (35.4m<sup>2</sup>, 381.0ft<sup>2</sup>)

Bedroom 1  
2.7m x 3.9m (11.6m<sup>2</sup>, 125.0ft<sup>2</sup>)

Bedroom 2  
2.8m x 3.4m (11.4m<sup>2</sup>, 123.0ft<sup>2</sup>)

Bedroom 3  
2.8m x 3.4m (11.3m<sup>2</sup>, 122.0ft<sup>2</sup>)

**APARTMENT 5**  
Total Area (70.0m<sup>2</sup>, 753.0ft<sup>2</sup>)

Living, dining, kitchen  
4.95m x 5.0m (28.2m<sup>2</sup>, 304.0ft<sup>2</sup>)

Bedroom 1  
2.7m x 4.9m (12.8m<sup>2</sup>, 138.0ft<sup>2</sup>)

Bedroom 2  
(3.8m x 2.8m (9.7m<sup>2</sup>, 104.0ft<sup>2</sup>))

**APARTMENT 6**  
Total Area (74.0m<sup>2</sup>, 797.0ft<sup>2</sup>)

Living, dining, kitchen  
5.4m x 4.4m (24.0m<sup>2</sup>, 258.0ft<sup>2</sup>)

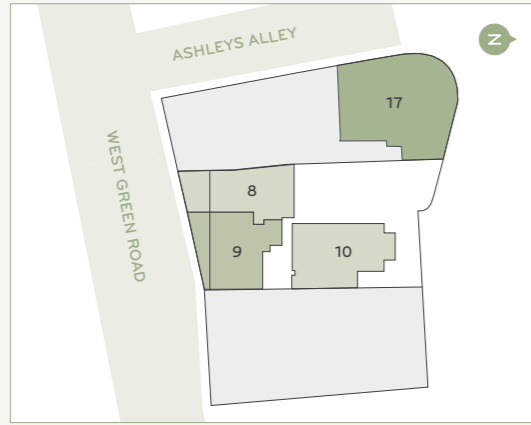
Bedroom 1  
(2.7m x 3.7m (14.5m<sup>2</sup>, 156.0ft<sup>2</sup>))

Bedroom 2  
2.8m x 4.5m (15.0m<sup>2</sup>, 161.0ft<sup>2</sup>)

All measurements are gross internal areas. Room sizes may be subject to minor alterations. Please refer to Rosebery house-KT17.com for the most up-to-date floor plans.

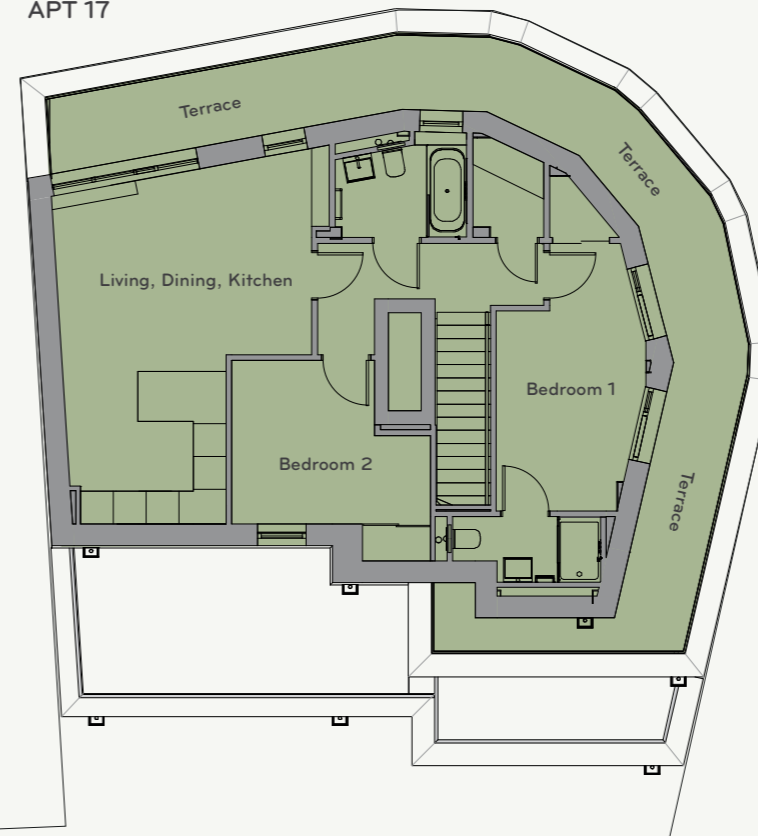
Head Office: IDM Properties  
LLP, Office B,  
West Gainsborough,  
1 Poole Street, London N1 5EA

+44 (0)20 7739 1650  
mail@idmproperties.com  
idmproperties.com



FLOOR
4th
<b>3rd</b>
2nd
1st
GROUND

APT 17

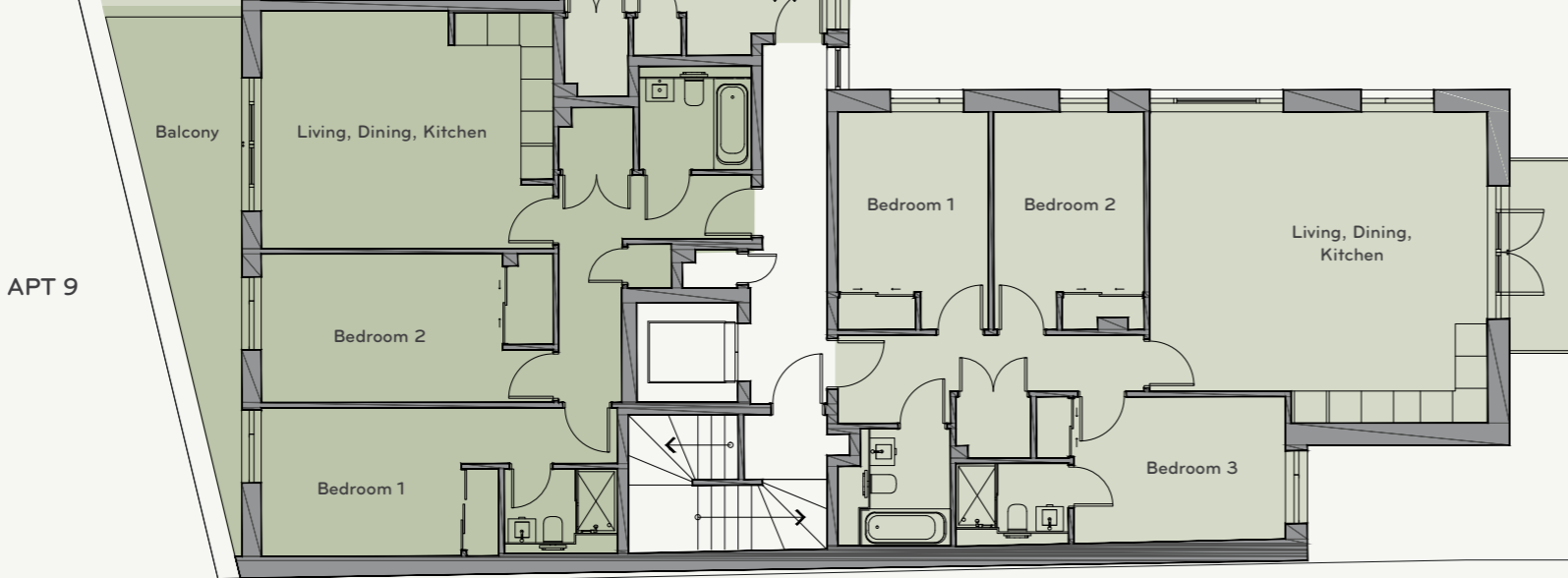


APARTMENT 17	
Total Area (73.6m <sup>2</sup> , 792.0ft <sup>2</sup> )	
Living, dining, kitchen 6.0m x 4.2m (25.1m <sup>2</sup> , 270.0ft <sup>2</sup> )	
Bedroom 1 3.3m x 3.7m (12.2m <sup>2</sup> , 130.0ft <sup>2</sup> )	
Bedroom 2 3.4m x 3.0m (10.3m <sup>2</sup> , 111.0ft <sup>2</sup> )	

APT 8



APT 9



APT 10

APARTMENT 10	
Total Area (89.0m <sup>2</sup> , 958.0ft <sup>2</sup> )	
Living, Dining, Kitchen 35.0m <sup>2</sup> , 377.0ft <sup>2</sup> (6.3m x 5.8m)	
Bedroom 1 11.4m <sup>2</sup> , 123.0ft <sup>2</sup> (3.9m x 2.7m)	
Bedroom 2 11.4m <sup>2</sup> , 123.0ft <sup>2</sup> (3.4m x 2.8m)	
Bedroom 3 11.2m <sup>2</sup> , 121.0ft <sup>2</sup> (3.3m x 2.8m)	
ENERGY EFFICIENCY RATING	88B
ENVIRONMENTAL IMPACT (CO <sub>2</sub> )	89B

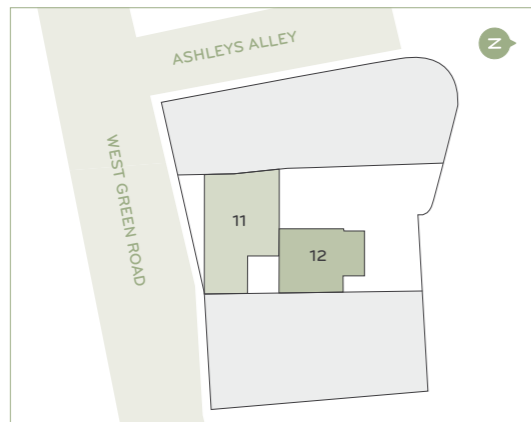
APARTMENT 8	
Total Area (61.6m <sup>2</sup> , 663.0ft <sup>2</sup> )	
Living, Dining, Kitchen 5.3m x 5.5m (28.3m <sup>2</sup> , 304.6ft <sup>2</sup> )	
Bedroom (includes walk-in-wardrobe) 4.6m x 2.9m (16.9m <sup>2</sup> , 181.9ft <sup>2</sup> )	
ENERGY EFFICIENCY RATING	87B
ENVIRONMENTAL IMPACT (CO <sub>2</sub> )	88B

APARTMENT 9	
Total Area (73.9m <sup>2</sup> , 795.4ft <sup>2</sup> )	
Living, Dining, Kitchen 4.4m x 5.4m (24.0m <sup>2</sup> , 258.3ft <sup>2</sup> )	
Bedroom 1 2.8m x 4.4m (14.5m <sup>2</sup> , 156.0ft <sup>2</sup> )	
Bedroom 2 2.8m x 5.5m (15.0m <sup>2</sup> , 161.4ft <sup>2</sup> )	

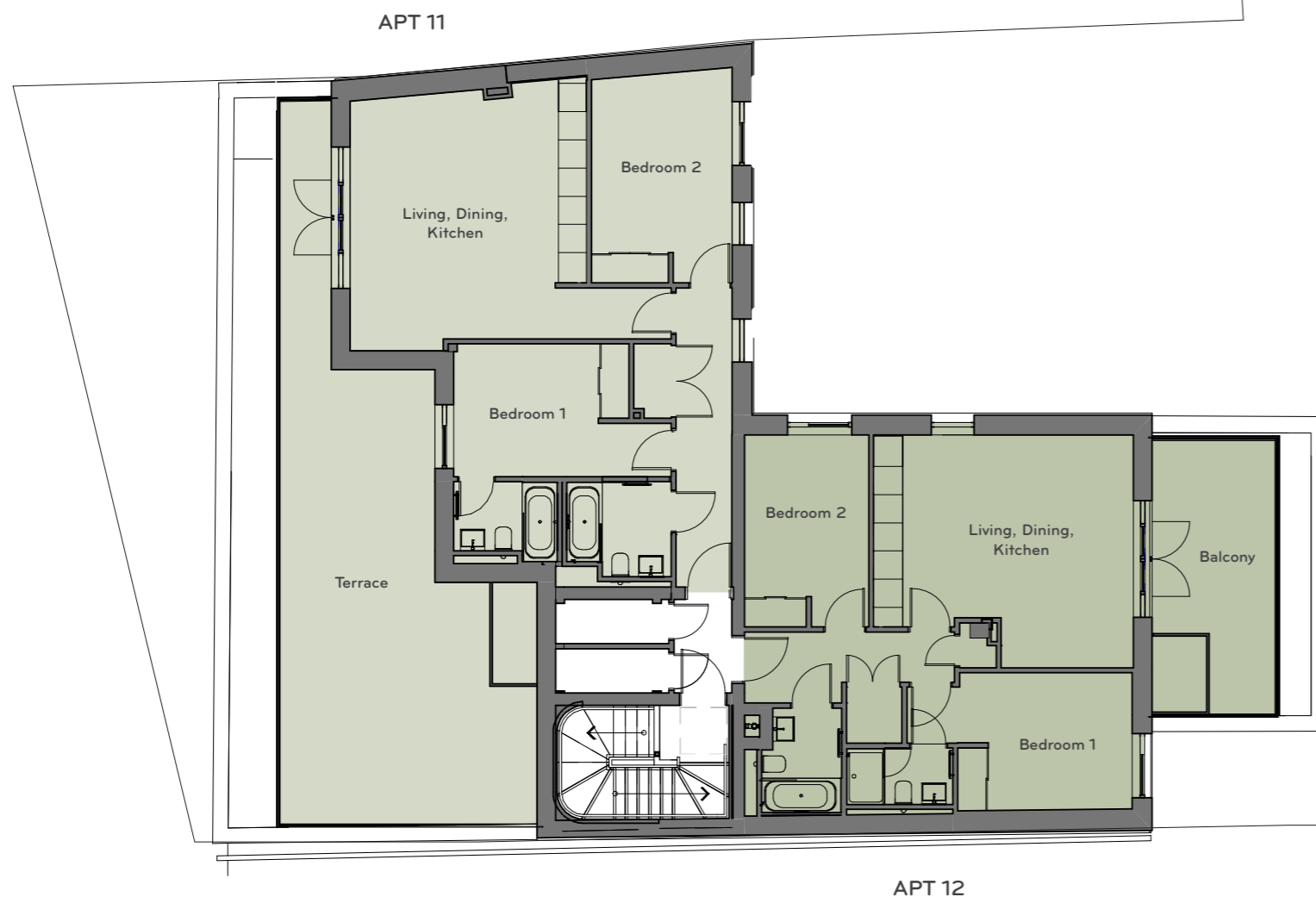
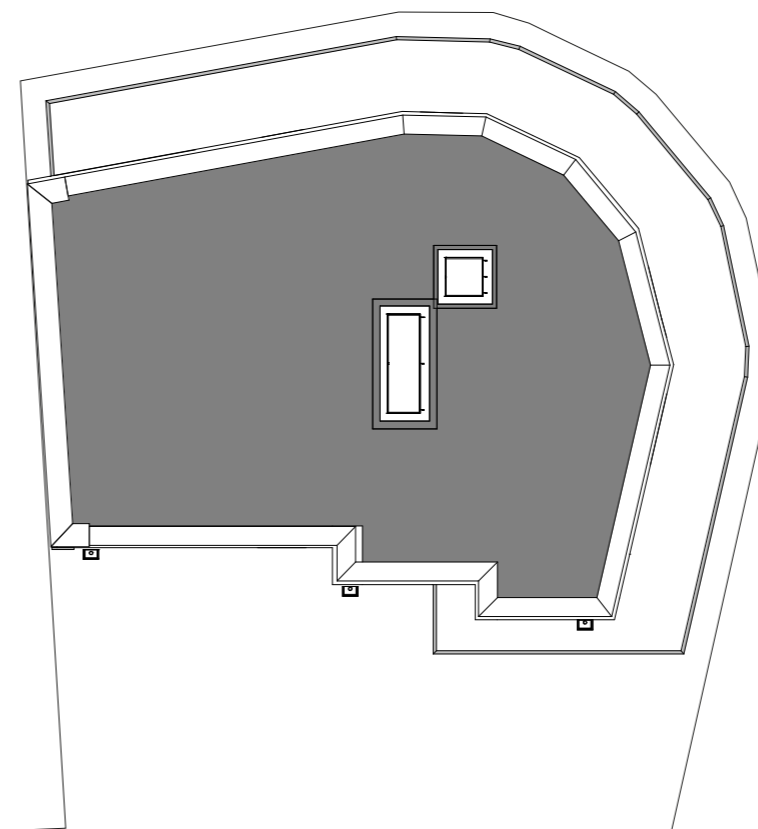
All measurements are gross internal areas. Room sizes may be subject to minor alterations. Please refer to Rosebery house-KT17.com for the most up-to-date floor plans.

Head Office: IDM Properties LLP, Office B, West Gainsborough, 1 Poole Street, London N1 5EA

+44 (0)20 7739 1650  
mail@idmproperties.com  
idmproperties.com



- FLOOR**
- 4th
  - 3rd
  - 2nd
  - 1st
  - GROUND



**APARTMENT 11**  
 Total Area (66.5m<sup>2</sup>, 716.0ft<sup>2</sup>)

**Living, Dining, Kitchen**  
 4.6m x 5.4m (24.9m<sup>2</sup>, 268.0ft<sup>2</sup>)

**Bedroom 1**  
 3.0m x 4.0m (12.0m<sup>2</sup>, 129.0ft<sup>2</sup>)

**Bedroom 2**  
 2.7m x 4.0m (10.7m<sup>2</sup>, 115.0ft<sup>2</sup>)

**APARTMENT 12**  
 Total Area (75.8m<sup>2</sup>, 815.0ft<sup>2</sup>)

**Living, Dining, Kitchen**  
 5.0m x 5.7m (28.8m<sup>2</sup>, 310.0ft<sup>2</sup>)

**Bedroom 1**  
 2.8m x 4.1m (11.4m<sup>2</sup>, 123.0ft<sup>2</sup>)

**Bedroom 2**  
 3.0m x 4.4m (13.2m<sup>2</sup>, 142.0ft<sup>2</sup>)

All measurements are gross internal areas. Room sizes may be subject to minor alterations. Please refer to Rosebery house-KT17.com for the most up-to-date floor plans.

Head Office: IDM Properties LLP, Office B, West Gainsborough, 1 Poole Street, London N1 5EA

+44 (0)20 7739 1650  
 mail@idmproperties.com  
 idmproperties.com