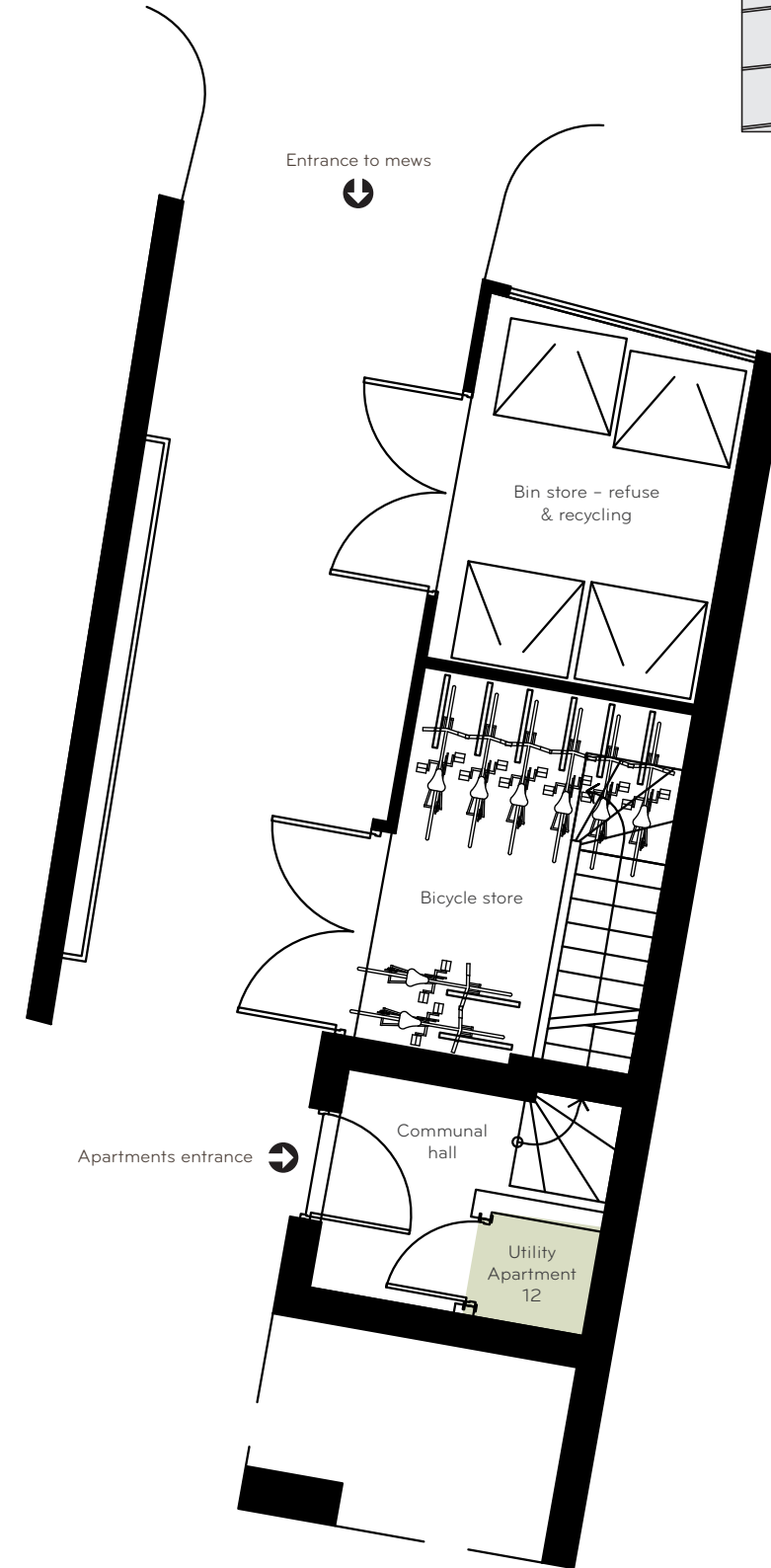
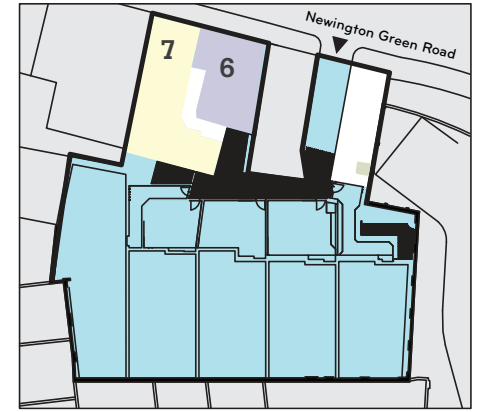
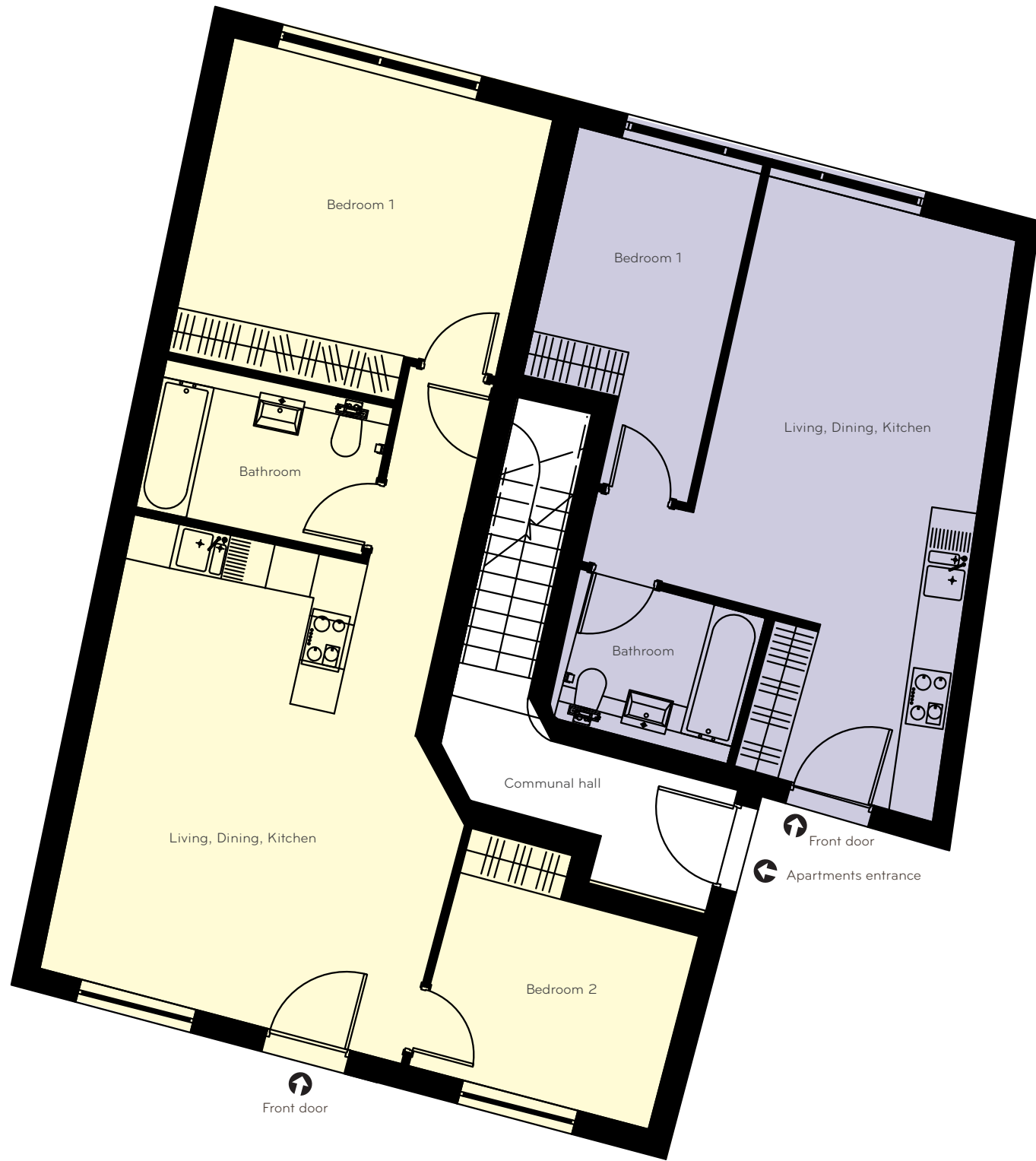


GROUND FLOOR



Apartment No.6 | 42.8m² | 460ft² total area

LIVING, DINING, KITCHEN
7.8m x 5.0m (32.5m² | 350ft²)

BEDROOM 1
4.5m x 2.5m (9.7m² | 104ft²)

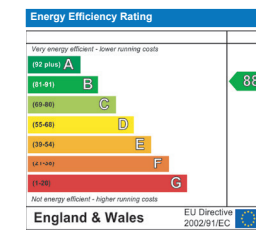
Apartment No.7 | 66.8m² | 719ft² total area

LIVING, DINING, KITCHEN
6.2m x 5.1m (32.4m² | 349ft²)

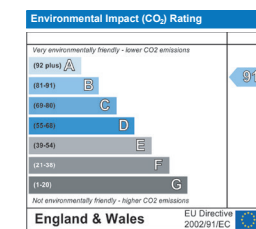
BEDROOM 1
5.7m x 2.8m (17.3m² | 186ft²)

BEDROOM 2
3.3m x 3.3m (9.5m² | 102ft²)

Predicted Energy Performance



The energy efficiency rating is a measure of the overall efficiency of a home. The higher the rating the more energy efficient the home is and the lower the fuel bills are likely to be.



The environmental impact rating is a measure of a home's impact on the environment in terms of carbon dioxide (CO₂) emissions. The higher the rating, the less impact it has on the environment.

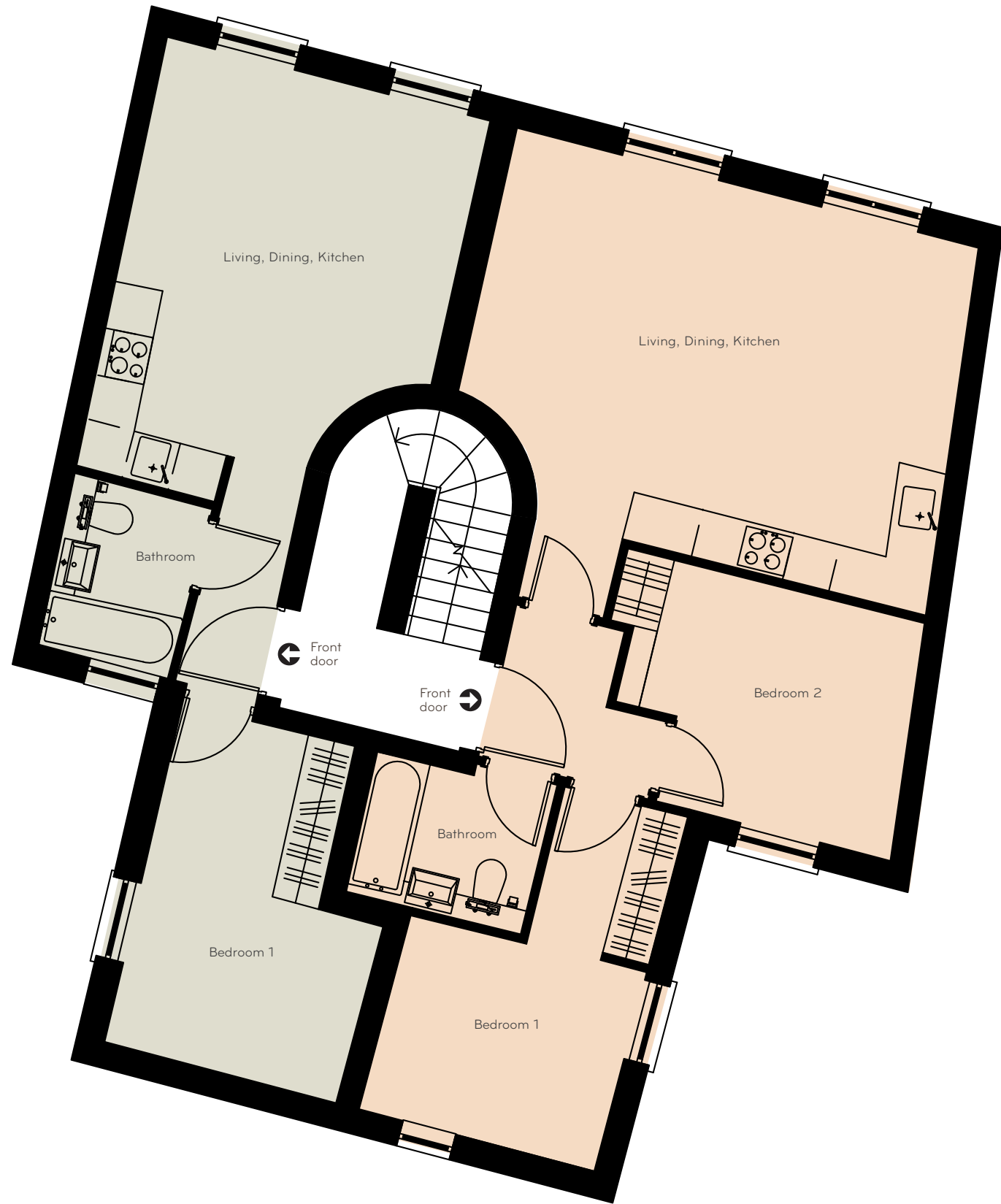
All measurements are gross internal areas. Room sizes may be subject to minor alterations.

Head Office: IDM Properties LLP
Office B, West Gainsborough
1 Poole Street, London N1 5EA

T 020 7739 1650 F 020 7739 0731
E mail@idmproperties.com
W idmproperties.com



FIRST FLOOR



Apartment No.8 | 39.1m² | 421ft² total area

LIVING, DINING, KITCHEN
5.5m x 4.2m (20.7m² | 223ft²)

BEDROOM 1
4.4m x 3.1m (11.7m² | 126ft²)

Apartment No.9 | 59.4m² | 639ft² total area

LIVING, DINING, KITCHEN
6.0m x 4.7m (28.7m² | 309ft²)

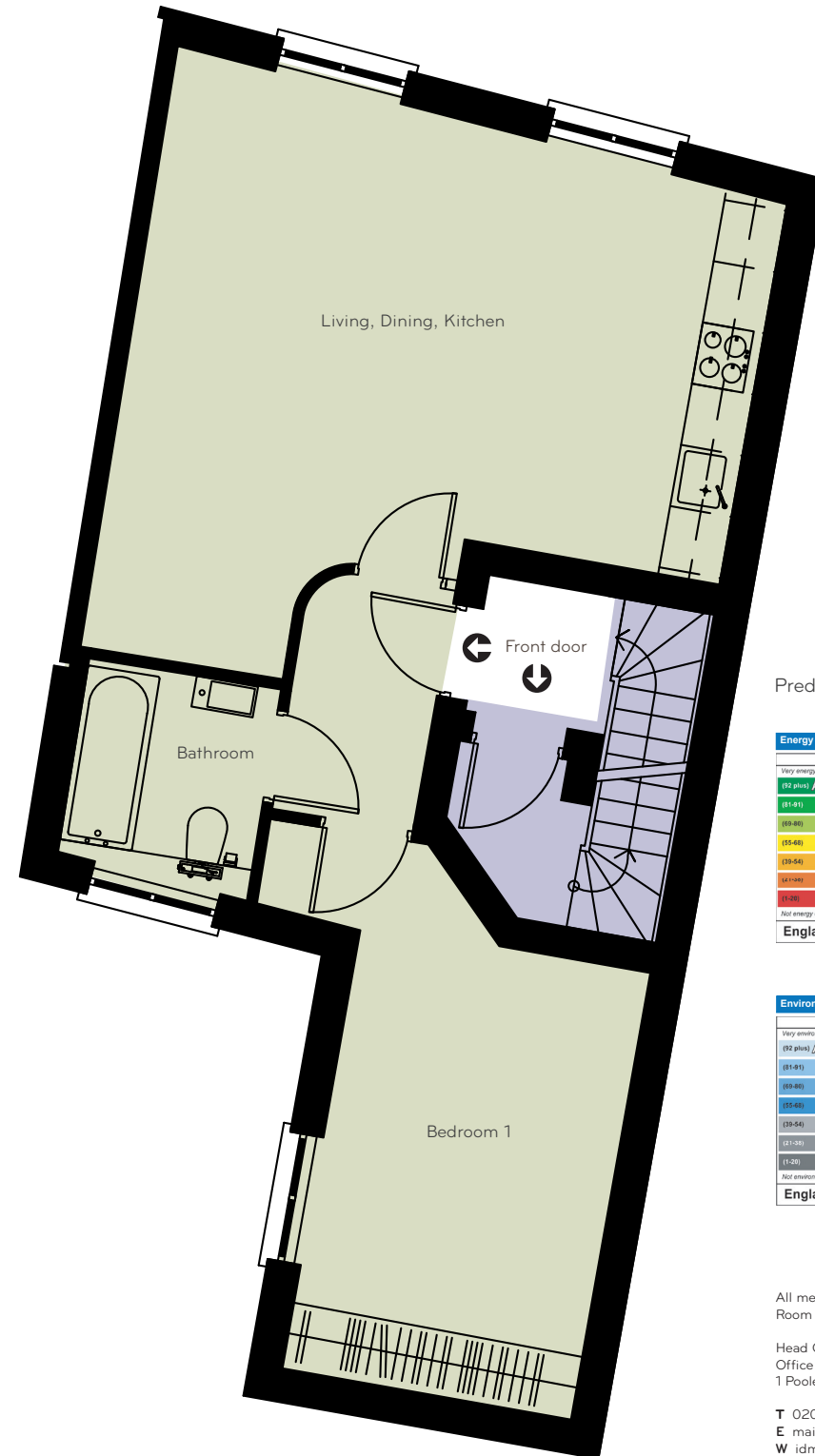
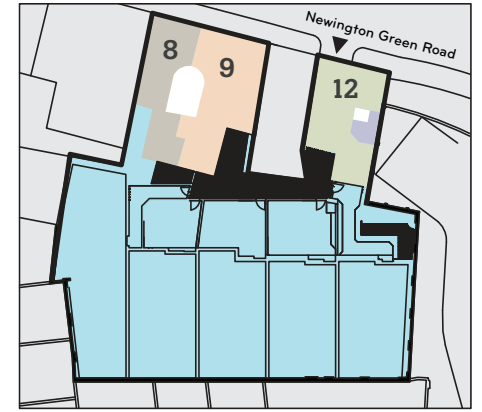
BEDROOM 1
4.6m x 3.1m (11.0m² | 118ft²)

BEDROOM 2
3.8m x 3.0m (10.5m² | 113ft²)

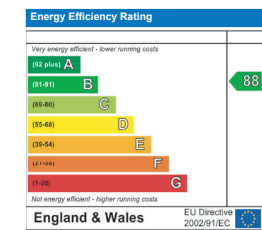
Apartment No.12 | 49.3m² | 531ft² total area

LIVING, DINING, KITCHEN
6.1m x 5.9m (27.6m² | 297ft²)

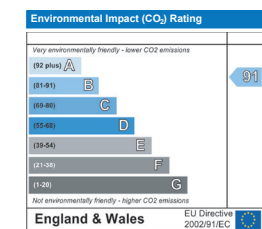
BEDROOM 1
4.4m x 3.8m (14.0m² | 150ft²)



Predicted Energy Performance



The energy efficiency rating is a measure of the overall efficiency of a home. The higher the rating the more energy efficient the home is and the lower the fuel bills are likely to be.



The environmental impact rating is a measure of a home's impact on the environment in terms of carbon dioxide (CO₂) emissions. The higher the rating, the less impact it has on the environment.

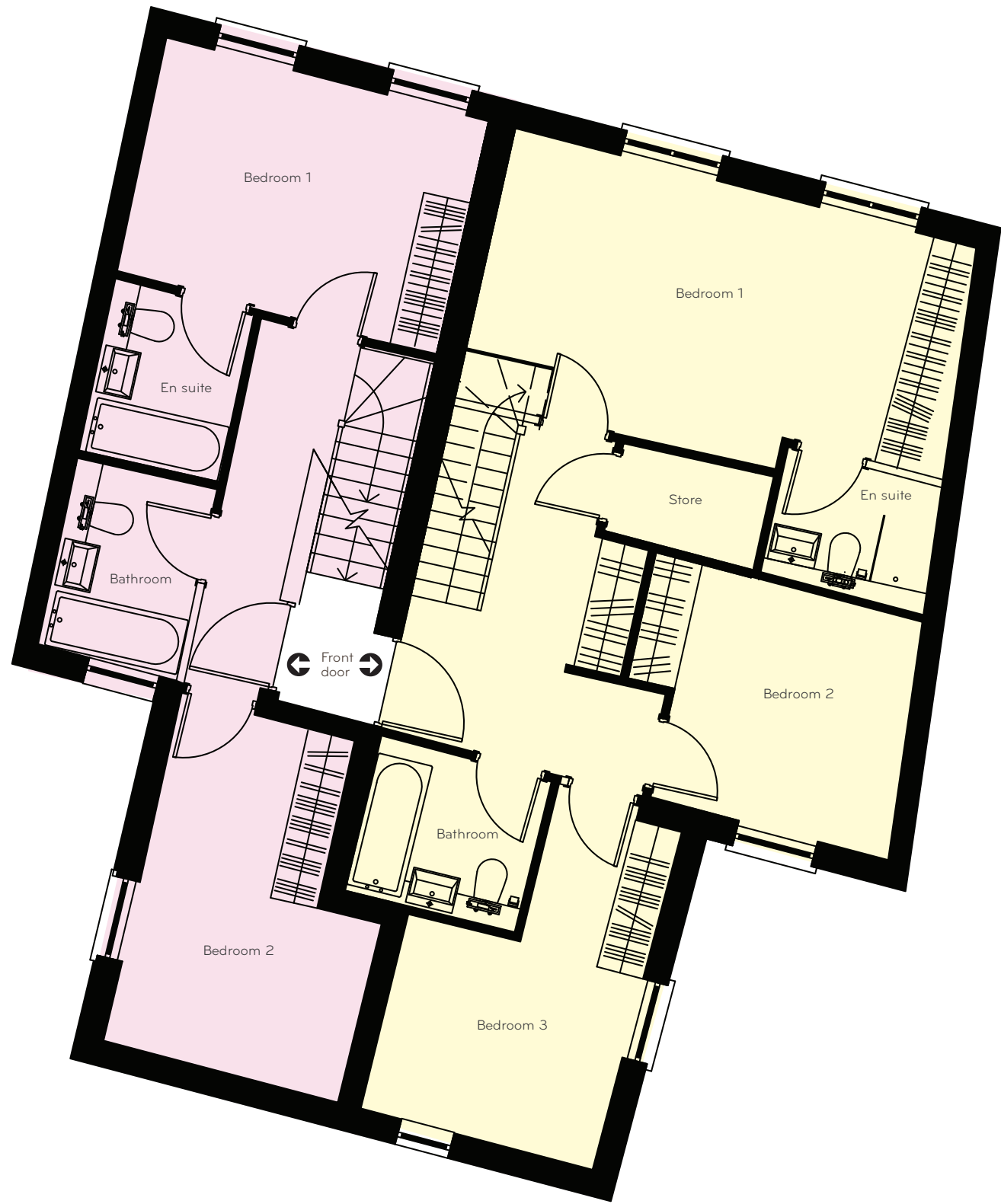
All measurements are gross internal areas. Room sizes may be subject to minor alterations.

Head Office: IDM Properties LLP
Office B, West Gainsborough
1 Poole Street, London N1 5EA

T 020 7739 1650 F 020 7739 0731
E mail@idmproperties.com
W idmproperties.com



SECOND FLOOR



Duplex apartment No.10 | 69.9m² | 752ft² total area

BEDROOM 1
4.2m x 3.0m (12.5m² | 135ft²)

BEDROOM 2
4.5m x 3.0m (11.9m² | 128ft²)

Duplex apartment No.11 | 104m² | 1119ft² total area

BEDROOM 1
6.2m x 2.9m (18.7m² | 201ft²)

BEDROOM 2
3.1m x 3.0m (9.9m² | 106ft²)

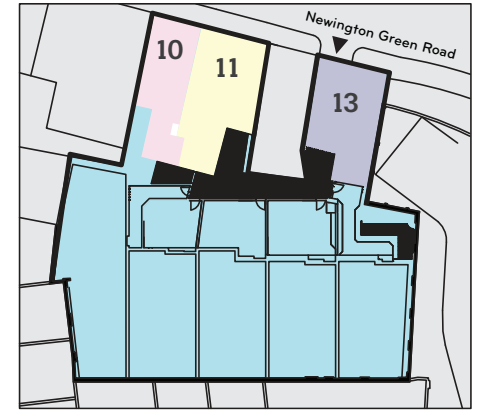
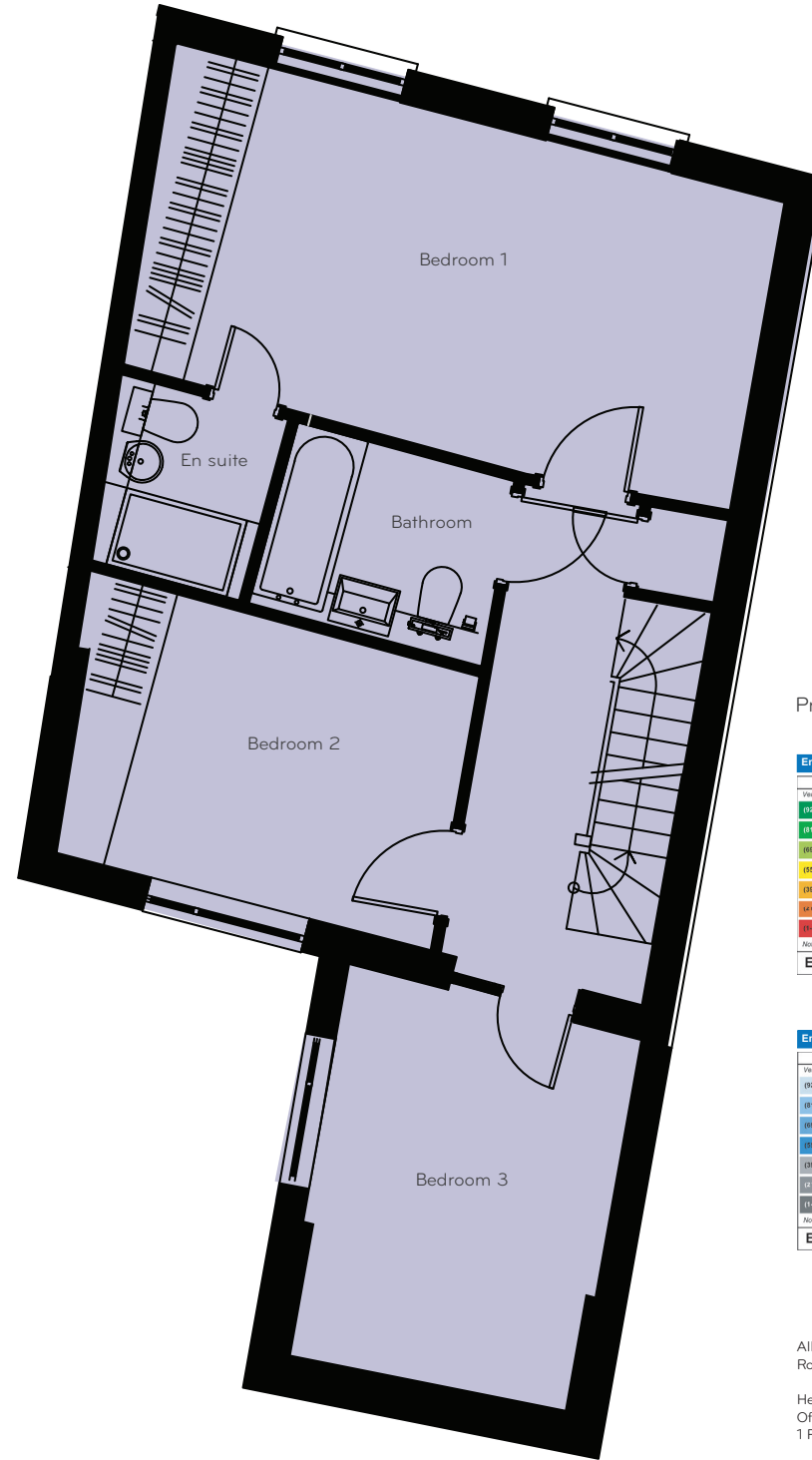
BEDROOM 3
4.6m x 3.0m (10.9m² | 117ft²)

Duplex apartment No. 13 | 100.9m² | 1086ft² total area

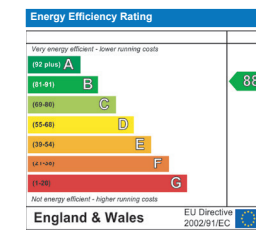
BEDROOM 1
6.1m x 3.1m (18.8m² | 202ft²)

BEDROOM 2
3.9m x 2.7m (10.1m² | 109ft²)

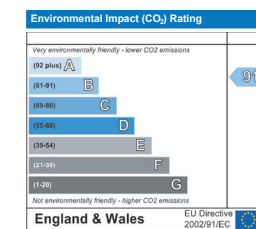
BEDROOM 3
3.0m x 4.0m (12.0m² | 129ft²)



Predicted Energy Performance



The energy efficiency rating is a measure of the overall efficiency of a home. The higher the rating the more energy efficient the home is and the lower the fuel bills are likely to be.



The environmental impact rating is a measure of a home's impact on the environment in terms of carbon dioxide (CO₂) emissions. The higher the rating, the less impact it has on the environment.

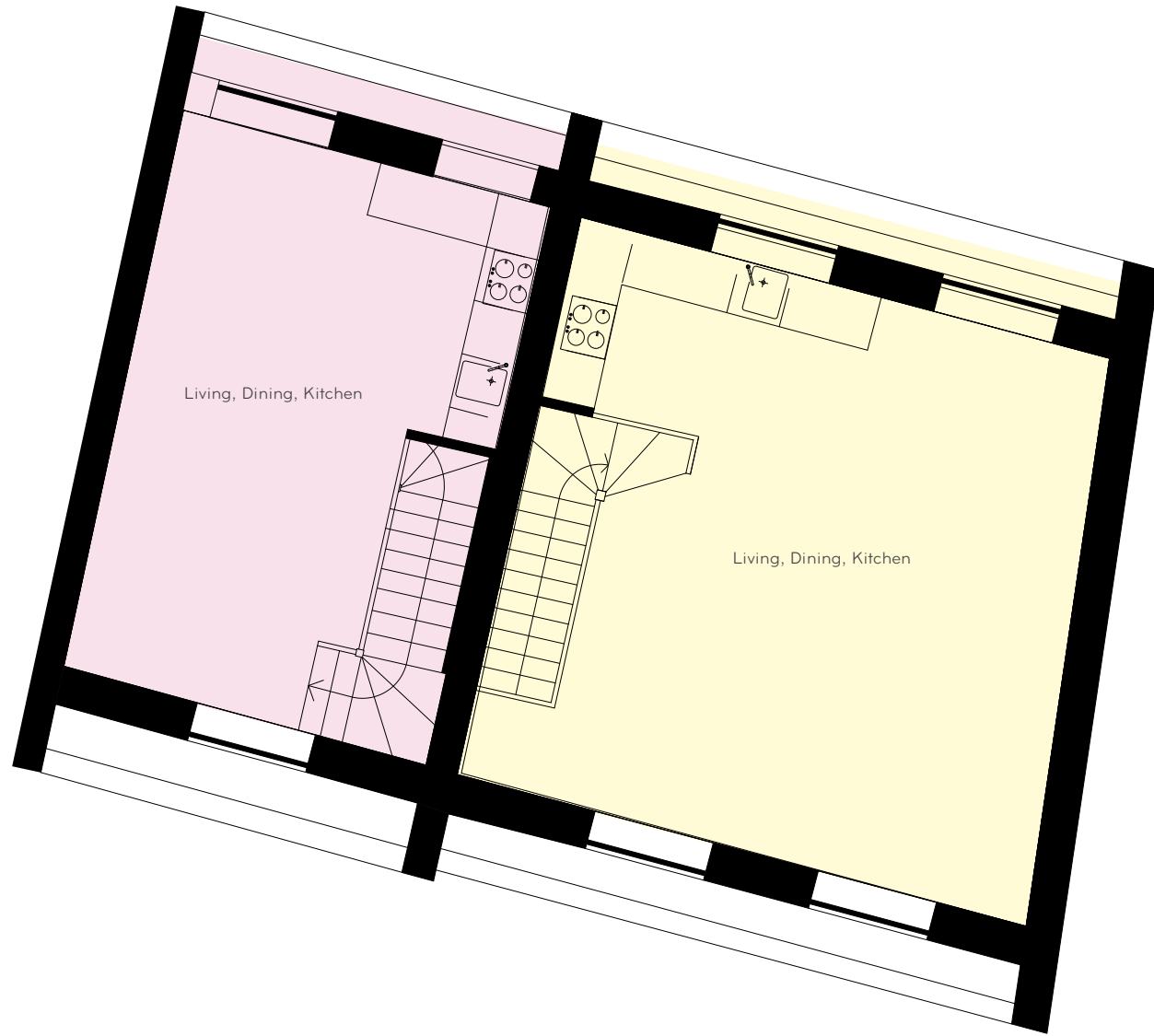
All measurements are gross internal areas. Room sizes may be subject to minor alterations.

Head Office: IDM Properties LLP
Office B, West Gainsborough
1 Poole Street, London N1 5EA

T 020 7739 1650 F 020 7739 0731
E mail@idmproperties.com
W idmproperties.com



THIRD FLOOR



Duplex apartment No.10 | 69.9m² | 752ft² total area

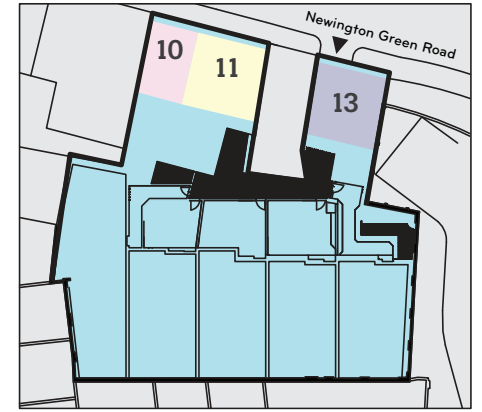
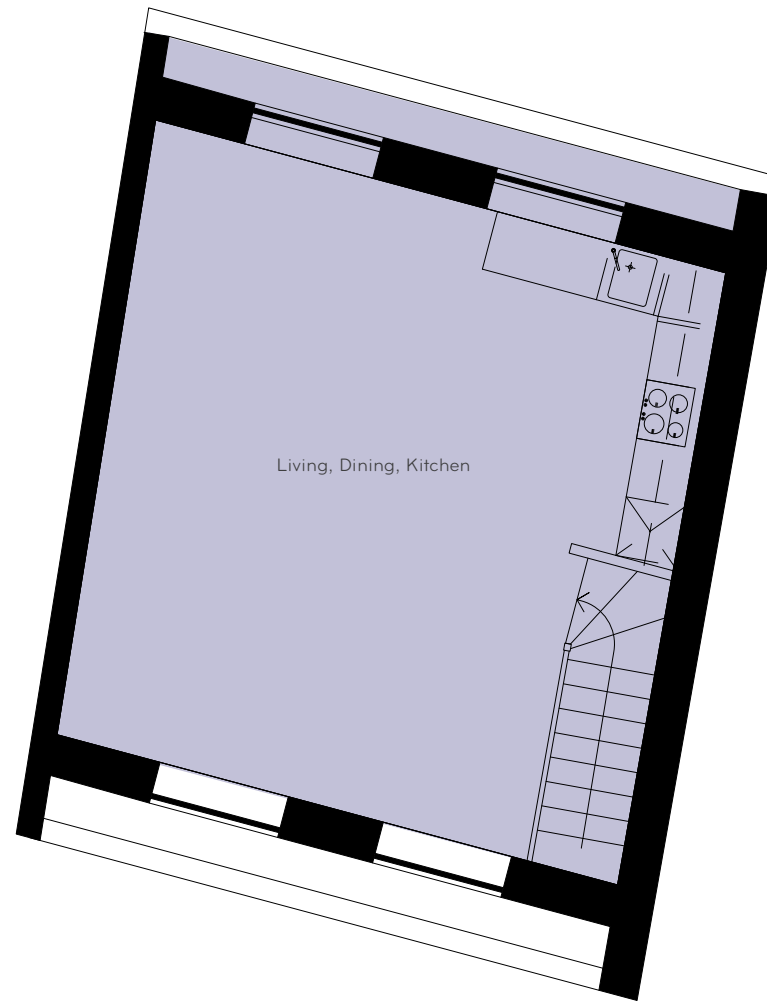
LIVING, DINING, KITCHEN
6.2m x 4.0m (21.5m² | 231ft²)

Duplex apartment No.11 | 104m² | 1119ft² total area

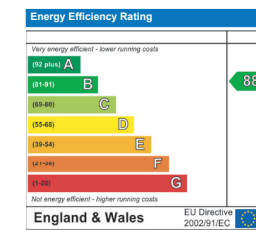
LIVING, DINING, KITCHEN
6.3m x 6.0m (35.7m² | 384ft²)

Duplex apartment No. 13 | 100.9m² | 1086ft² total area

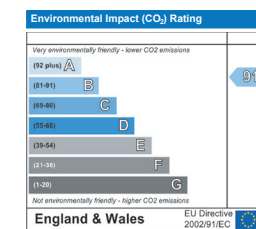
LIVING, DINING, KITCHEN
6.3m x 6.0m (34.1m² | 367ft²)



Predicted Energy Performance



The energy efficiency rating is a measure of the overall efficiency of a home. The higher the rating the more energy efficient the home is and the lower the fuel bills are likely to be.



The environmental impact rating is a measure of a home's impact on the environment in terms of carbon dioxide (CO₂) emissions. The higher the rating, the less impact it has on the environment.

All measurements are gross internal areas. Room sizes may be subject to minor alterations.

Head Office: IDM Properties LLP
Office B, West Gainsborough
1 Poole Street, London N1 5EA

T 020 7739 1650 F 020 7739 0731
E mail@idmproperties.com
W idmproperties.com

